



Our Mission:

To identify and strengthen leaders so that every congregation makes new and mature disciples for Jesus Christ.

Better Know a Presbyter

This week is a combo "Better Know" and "Prayer Concern". We'll meet Presbyter Denise Lay, chair of the Committee on Nominations and Representation, and an active member member of Presbytery.

Rev. Lay was also recently ordained as the pastor of [First Presbyterian Church of Zephyrhills](#). And of course, there are always challenges in a new call. We heard from Denise yesterday:

"Arrived at FPC Zephyrhills this morning to a flooded first and second story. We are dealing with restoration specialists, electricians, plumbers, and insurance company. A LOT of damage to the building with ceilings down in several rooms and extensive water damage to drywall, furniture, etc. Thankfully, the sanctuary is just fine!"

Please lift up Denise, the restoration team, and the church in your prayers! Then take a few minutes and get to better know Rev. Lay:



A word of warning: next week the eNews will be on hiatus, as the Stated Clerk celebrates his daughter's 1st birthday with a little time off!

Lastly, I hope that if you have a joy, concern, resource or mission opportunity to share, you'll let me know!

In Christ,

Rev. Dave Baker,
Stated Clerk and Director of Communications
Presbytery of Tampa Bay



News From Around the Presbytery

Regional Commission Summaries

Find the Summary reports of each of our Regional Commissions below!

- [East Region Summary](#)
 - [Hillsborough Region Summary](#)
 - [West Region Summary](#)
-



Invitation for the Whole Presbytery

Ruling Elder Judy Maxwell holds up one of the signs used by Chapel in the Pines for their second drive-by prayer event to be held Friday, May 13th and Saturday May 14th 8:30 a.m. - 12:00 p.m. There will also be a yard sale with proceeds to outreach at the same times.

[Chapel in the Pines](#) and [Knox Fellowship](#) cordially invite all those called or interested in street ministry in a drive-by prayer event near the presbytery office to join us. We start at the presbytery office, 4704 Kelly Rd, Tampa, FL 33615. Two signs will be provided and experienced prayer warriors will be on hand to take prayer requests, pray for people who stop by and pray for Holy Spirit penetration of homes, churches, neighborhoods, schools and businesses. Judy Maxwell (judymmaxwell@gmail.com) and Carl Lammers (Carl@knoxfellowship.com) are available to answer questions.

All Tampa Bay Presbytery folks and friends are welcome.
The more, the merrier!

Installation Services

There are three installation services coming up in our Presbytery.

First, you're invited to celebrate the beginning of a new ministry at [First Presbyterian Church of Dunedin](#). There will be a worship service and reception there for Rev. David Shelor on Sunday May 15th starting at 3pm. Teaching Elders in the West Region especially are encouraged to come and show support for their colleague in ministry.

Second, you're also invited to celebrate the beginning of a new ministry at [Church on the Bayou of Tarpon Springs](#). There will be a worship service and reception there for Rev. Kathy Horne on Sunday May 22nd starting at 3pm. Teaching Elders in the West Region especially are encouraged to come and show support for their colleague in ministry.

Third, you're invited to celebrate the beginning of a new ministry at [Northwest Presbyterian Church of St Petersburg](#). There will be a worship service and reception there for Rev. George "Chip" Tolleson on Sunday June 5th starting at 5:30pm. Teaching Elders in the West Region especially are encouraged to come and show support for their colleague in ministry.

A Word from the Trustees: Whose house is it anyway?

For many, our church property is as important and meaningful as our own home. It is the place where we saw our first child baptized, took our vows, or bore witness to the resurrection as a loved one enters the Church Triumphant. It is our shelter throughout all life's moments and a witness of our Christian faith. But whose house is it?

Frequently questions arise during the course of a congregation as to property ownership. This might come by way of an outside vendor seeking to rent part of the church property or a congregation seeking to mortgage, sell, or expand its holdings. However, most congregations are unaware that such agreements most often require prior approval by the Presbytery's Board of Trustees. This is because the property of congregations of the Presbyterian Church (U.S.A.) is held in trust[G-4.0203] This means that the Church and the Presbytery are effectively co-owners of the property.

The practical impact of this is explained in the Book of Order here:
G-4.0206 - Selling, encumbering, or Leasing Church Property

a. Selling or encumbering Congregational Property

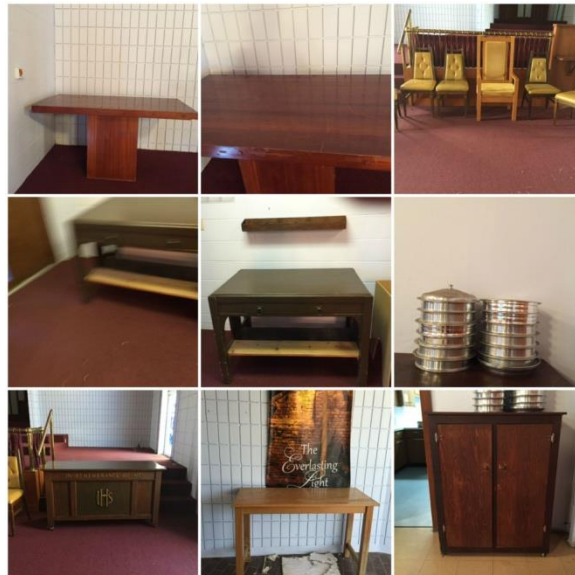
A congregation shall not sell, mortgage, or otherwise encumber any of its real property and it shall not acquire real property subject to an encumbrance or condition without the written permission of the Presbytery transmitted through the Session of the Congregation

b. Leasing Congregational Property

A congregation shall not lease its real property used for purposes of worship, or lease for more than five years any of its other real property, without the written permission of the Presbytery transmitted through the Session of the Congregation.

As you can see, almost all agreements involving Church Property need to be approved by the Board of Trustees of the Presbytery. There are two major exceptions. Leases of non-worship space for less than 5 years do not need Trustee approval although the Trustees can often provide helpful advice. More generally, after Reunification of the two major Presbyterian Denominations in 1983, Churches were given a period of time to opt out of the PC(USA) version of the trust clause and retain the old PC(US) trust clause, which allows church trustees instead of Presbytery trustees to make these decisions. The Presbytery Office maintains a list of those Churches in our Presbytery who have opted out.

You can learn more about the Trust Clause in the Presbyterian Church (U.S.A.) Book of Order, section G-4.02.



Various Items from Highland Largo

As you may already know, Highland PC of Largo is in the process of selling their building to merge with another Presbyterian church, [Hope of Clearwater](#). As part of that process, there are many items that the church would like to find places for:

- Baptismal font
- 4 Tables:
 - With center pedestal (scratched)
 - Dark table - with drawer and well-worn shelf on the bottom
 - Four legged table - oak - well worn
 - Dark Communion Table with inscription and storage - wear and tear
- 6 Chancel chairs - 5 + 1 "pulpit" chair
- 175 copies of "Old Red" hymnals
- door cabinet
- Communion "cup serving trays"
- Work table
- 2 secretary desks - one needing new glass top/one needing drawer handles

These items are "free to a good home". For questions or additional info, please call:

Nancy Hilkert @ [727-244-4152](tel:727-244-4152) or
Rev. Vicki ByRoade @ [727-515-3162](tel:727-515-3162)

FPC Inverness giving away choir robes

[First Presbyterian Church of Inverness](#) has choir robes to give to anyone who can pick them up. Light grey with 2 accompanying, reversible stoles, purple/green, red/white. There are about 50 pieces available. These robes are about 25 years old, but still serviceable. If interested please call their church office [352-637-0770](tel:352-637-0770).

\$10,000 Grant for New Initiatives

The Developmental, Research, Experimental, Adaptive Mission (DREAM) Grant is being offered by the Presbyterian Mission Agency in order to encourage dreamers, risk-takers, pioneers and trailblazers.

This grant is designed to encourage the birth of new ventures through congregations and presbyteries rather than to support the expansion of existing programs within congregations. For the purpose of this grant, new is defined as an initiative that was created no earlier than January 1, 2014. This grant is not intended for new worshiping communities or new church developments.

Please note that the deadline for this grant is May 25th. If you are interested in applying, please download the application [here](#) and return it completed to the Presbytery Office.

Mission Opportunities



Can You Spare a Day?

Volunteers are needed in Presbytery of Tampa Bay!

Individuals and teams are needed to help repair homes in Pasco County that were flooded by intense rains and river rise last summer. Twenty homes have been completed to date, but 28 homes are still awaiting repair. Please consider helping these families with their recovery.

For more information, please call Kathy Broyard, FLAPDAN Director at [941-483-0675](tel:941-483-0675).



Beth-El Mission Opportunities

Summer will be here before you know it! Beth-El has numerous mission opportunities for adults and youth. From leading Vacation Bible School, to work groups helping out in our community, to scholarships for kids to go to camp at Cedarkirk, there are many ways your church can help support this valuable mission. Call Javier today at 813-633-1548 ext. 228, or email him at Javier@beth-el.org to learn more.



**PRESBYTERIAN
DISASTER
ASSISTANCE**

OUT OF CHAOS, HOPE

Earthquakes in Japan and Ecuador

Over the past week, the earth has shaken. On Saturday night the coast of Ecuador was rocked by an earthquake measuring 7.8 on the Richter scale.

This came on the heels of two separate earthquakes in Japan, the first measuring 6.2 on the scale; the second, 7.0.

As aftershocks continue to threaten, already more than 500 lives have been lost. Thousands of other people have been injured, and communities lie in ruins.

Presbyterian Disaster Assistance (PDA) is working in collaboration with our partner the ACT (Action by Churches Together) Alliance to respond to this crisis, providing support to those suffering in the aftermath. As our immediate response takes shape, PDA is also preparing for long-term support for both Ecuador and Japan. Long after the initial wave of relief recedes, PDA will remain to accompany the people of Ecuador and Japan as they rebuild their lives, walking the road out of this chaos with hope.

Stand in the GAP for the people of Japan and Ecuador
as you Give, Act, and Pray.

For the situation report and to know more on what you can do click [here](#).

Upcoming Workshops

Below are a few of the more useful conferences coming to our area later in the year to get on your radar now:

- **The Go Disciple Live "Be the Light" Conference**
 - Formerly known as the Evangelism and Church Growth Conference, this will be held at the Trade Winds Island Resorts in St. Pete Beach, FL. [Discipling innovator Mike Breen](#) will be one of the speakers. On-site check in will be open Monday, August 8, from 10:00 a.m. to 6:30 p.m. Welcome and orientation will begin at 5:30 p.m. The conference concludes with worship on Thursday, August 11, at 7:00 p.m. [Registration info and Conference Schedule](#) in the link.
 - The CCV will offer scholarships of \$100.00 per person or up to \$300.00 for three people from each congregation who wish to attend.
- **Mid Council Financial Network "Giving - It Just Adds Up!"**

Conference

- This is a continuing education and training opportunity for church financial persons and staff or volunteers working with the finances in the presbyteries and synods. Representatives from the Office of the General Assembly, Presbyterian Mission Agency, Board of Pensions, Presbyterian Foundation, Presbyterian Investment and Loan Program, Presbyterian Publishing Corporation, denominationally endorsed insurance programs, and other key vendors will be on hand. The conference will be at the Holiday Inn Hotel & Suites on Clearwater Beach, 521 S. Gulfview Boulevard, November 16-18, 2016. [Past agendas and examples of the topics covered.](#)
- Your Stated Clerk will be opening the conference with an introduction from Tampa Bay.
- **Church Communications Workshop**
 - Day long conference hosted by the Presbytery and the Presbyterian Mission Agency. Create excitement and energy in your congregation by using simple, but powerful communications tools. What do you want your community to know about your church? Are you looking for ways to share God's love through social media? Does your church have a well-thought-out communications plan-for both internal and external audiences? You don't have to have a huge budget or a large staff to effectively tell the story of your work inside and outside the church walls. [More information](#) about the workshop (not a registration link).
 - Prospective date is Wednesday 9/28. **Contact the Stated Clerk ASAP if you have a conflict with this date but want to attend.**

Job Opportunities

Part Time Parish Associate at Grace PC in Spring Hill:

[Grace PC](#) is looking for a retired Teach Elder in the Spring Hill area be interested in working 10ish hours a week doing pastoral care (Home and Hospital visitation). This would be a paid position, and would start ASAP.

For more information or to apply,

please contact Rev. Keith Posehn at revdrkid@me.com.

Northwood PC Job Opening:

Full Time Director of Youth and Family Ministries

Northwood Presbyterian Church seeks an enthusiastic person for ministry to our youth and their families.

Director of Schools

Well established Christian Pre-School/VPK/After Care, located in Countryside area, seeking a dynamic experienced VPK Director for its NAEYC accredited Gold Seal quality program.

For more details please go to: www.northwoodpc.org

Resumes may be sent to communications@northwoodpc.org. Job description is available upon request at same email. No phone calls please.

Korean Presbyterian Church of Tampa Job Opening:

Full-time or Part-Time EM Pastor

KPCT is currently seeking an EM Pastor to shepherd the Young Adult and Youth Group of high school and middle school students. The church is located at 6510 Yosemite Dr., Tampa, FL 33634.

For more information please contact Ki Choi at kih.choi3@gmail.com or read the [position description](#).

Presbytery of Tampa Bay | [813 868 4800](tel:8138684800) | presbyteryoftampabay.com