



# **PRESBYTERY TEN-YEAR TREND REPORT**

Tampa Bay Presbytery

**Research Services**

**A Ministry of the Presbyterian Mission Agency**

**Presbyterian Church (U.S.A.)**

**100 Witherspoon Street**

**Louisville, KY 40202**

**1-888-728-7228 ext. 2040**

---

# PRESBYTERY TEN-YEAR TREND REPORT

---

This report for the presbytery provides data for the most recent 10 years compiled from the Session Annual Statistical Reports for congregations in the presbytery. The following tables and figures present trends on a large number of factors. Careful analysis of individual tables and consideration of key questions for each listed below will yield additional insights.

## Congregations and Membership (Table 1):

### Key Questions:

- What are the policies and strategies regarding new church developments in the presbytery?
- Are new church developments regarded as one avenue for increasing membership figures in the presbytery?
- What other presbytery-wide strategies exist to attract new members or to limit the loss of existing members?
- What unique resources are available to assist small-membership congregations (i.e., fewer than 100 members)?

## Distribution of Congregations by Membership Size (Table 2):

### Key Questions:

- How do presbytery staffing priorities reflect the needs of small, mid-size, and large congregations?
- How does the size distribution of congregations in the presbytery affect the resources of the presbytery and the demand for services?

## Distribution of Congregations by Average Weekly Worship Attendance (Table 3):

### Key Questions:

- What do the average worship attendance figures indicate about congregational vitality in the presbytery?
- What presbytery resources exist to assist congregations that seek to enhance their worship services, to attract more visitors to worship, or to add worship services?
- What patterns of clergy supply and demand result from the large percentage of small congregations?

## Membership and Population (Table 4):

### Key Questions:

- What presbytery-wide strategies exist to attract racial-ethnic persons so that membership reflects the racial-ethnic mix of the area?
- How are population shifts in the presbytery reflected in new church development strategies and redevelopment efforts?

## **Congregations with One-Fifth or More Minority Racial/Ethnic Membership (Table 5):**

### **Key Questions:**

- Does the presbytery employ a culturally-sensitive strategy to encourage the effectiveness of racial-ethnic congregations?
- Are there new church development policies and strategies for increasing the number of racial-ethnic congregations?
- Does the presbytery have a long range plan for evaluating ministry effectiveness and relevancy to racial-ethnic populations?

## **Descriptive Statistics of Teaching Elders (Table 6):**

### **Key Questions:**

- Are congregations in the presbytery able to attract and support the clergy that they need?
- What presbytery policies and strategies exist for attracting and supporting women and/or racial-ethnic teaching elders?
- What role do Commissioned Lay Pastors play in meeting congregational leadership needs?

## **Membership and Total Contributions (Table 7):**

### **Key Questions:**

- From what types of receipts (e.g., investment income, bequests) have congregations and the presbytery benefited the most?
- What stewardship strategies and financial campaigns have been the most successful in generating new resources for the presbytery and its congregations?

## **Membership and Local Program and Local Mission Information (Table 8):**

### **Key Questions:**

- What does the level of funding for local programs and local missions suggest about the presbytery's priorities and the priorities of its congregations?
- What congregational and presbytery factors influence the stability of budgetary commitments over time?

## **Congregations Ranked by Validated Mission Expenditures (Table 9):**

### **Key Questions:**

- Have the top-ranking congregations in terms of validated mission expenditures consistently held these positions over the last ten years?
- Have some congregations made significant progress in their level of mission expenditures?
- What strategies or factors explain their success?

## **Congregations Ranked by Total Receipts (Table 10):**

### **Key Questions:**

- Have the congregations with the largest total receipts consistently held these positions over the last ten years?
- What factors contribute to year-to-year changes in these rankings?
- How do the rankings based on mission expenditures compare with the rankings based on total receipts?

## **Congregations Ranked by Per Member Giving (Table 11):**

### **Key Questions:**

- Which congregations experienced significant increases in per-member giving in the last 3 years?
- What can other congregations learn from their success?
- What training and resources can the presbytery provide to help congregations conduct effective stewardship campaigns?

## **Congregations by Year Organized (Table 12):**

### **Key Questions:**

- Given the large shifts in population concentrations in the last 40 years, where are existing congregations located in relationship to current population concentrations?
- What systematic analyses and resulting presbytery strategies have emerged to address demographic changes in the presbytery?

## **Gains and Losses, Inactives, and Christian Education Enrollment (Table 13):**

### **Key Questions:**

- How many of the “other losses” can be attributed to the loss of new members? What presbytery or congregational programs are in place to assimilate and retain new members?
- What do the trends in church school enrollment indicate about Christian education curriculum needs?
- Is there a regular evaluation process for assessing curriculum needs in the presbytery?
- How can the presbytery help congregations in their efforts to re-involve inactives in the life of the church?

## **Race/Ethnicity and Gender of Members, Ruling Elders, Deacons, and Teaching Elders (Table 14):**

### **Key Questions:**

- What presbytery-wide efforts have occurred to develop lay leadership that is race and gender inclusive?
- What presbytery-wide efforts have occurred to develop pastoral leadership that is race and gender inclusive?

## **Growth in Average Worship Attendance (Table 15):**

### **Key Questions:**

- What percentage of congregations have achieved an increase in their average worship attendance over the last few years? What can other congregations learn from their experiences?
- How can the presbytery assist congregations in increasing worship attendance?

## **Congregations Ranked by Growth/Decline in Membership and Attendance (Table 16):**

### **Key Questions:**

- Does change in membership seem to be related to changes in worship attendance?
- How does the presbytery celebrate the success of congregations that are growing in membership or worship attendance?

# Presbytery Ten-Year Trend Report

## Table of Contents

Congregations and Members .....	Table 1
Distribution of Congregations by Membership Size .....	Table 2
Distribution of Congregations by Average Weekly Worship Attendance.....	Table 3
Membership and Population .....	Table 4
Congregations with One-Fifth or More Minority Racial/Ethnic Membership .....	Table 5
Descriptive Statistics of Teaching Elders.....	Table 6
Membership and Total Contributions .....	Table 7
Membership and Local Program and Local Mission Information .....	Table 8
Congregations Ranked by Validated Mission Expenditures .....	Table 9
Congregations Ranked by Total Receipts .....	Table 10
Congregations Ranked by Per Member Giving .....	Table 11
Congregations by Year Organized .....	Table 12
Gains and Losses, Inactives, and Christian Education Enrollment .....	Table 13
Race Ethnicity and Gender of Members, Ruling Elders, Deacons, and Teaching Elders.....	Table 14
Growth in Average Worship Attendance.....	Table 15
Congregations Ranked by Growth/Decline in Membership and Attendance .....	Table 16

**Tampa Bay Presbytery - Table 1**  
**Congregations and Membership, 2002 - 2012**

	2002	2003	2004	2005	2006	2007	2008	2009	2010	2011	2012
Number of Congregations	77	76	76	75	76	76	76	75	73	72	72
Number of Members	26,809	26,112	25,313	24,821	24,339	23,731	23,257	22,451	22,309	21,559	20,722
Members as % of Total PC(USA) Membership	1.09%	1.09%	1.07%	1.07%	1.07%	1.07%	1.09%	1.08%	1.11%	1.10%	1.12%
Mean Number of Members Per Congregation	348.2	343.6	333.1	330.9	320.3	312.3	310.1	303.4	305.6	299.4	287.8
Median Number of Members Per Congregation	202.0	200.0	193.5	172.0	174.0	169.0	159.0	157.5	150.0	159.5	154.5
Number of Congregations with 100 Members or Less	19	20	20	19	21	19	20	23	25	25	27
% of Congregations with 100 Members or Less	24.7%	26.3%	26.3%	25.3%	27.6%	25.0%	26.3%	30.7%	34.2%	34.7%	37.5%
Number of Congregations with 101 - 300 Members	27	26	25	25	26	28	29	26	24	24	23
% of Congregations with 101 - 300 Members	35.1%	34.2%	32.9%	33.3%	34.2%	36.8%	38.2%	34.7%	32.9%	33.3%	31.9%
Number of Congregations with 301 - 500 Members	13	13	15	16	15	14	11	11	11	10	10
% of Congregations with 301 - 500 Members	16.9%	17.1%	19.7%	21.3%	19.7%	18.4%	14.5%	14.7%	15.1%	13.9%	13.9%
Number of Congregations with more than 500 Members	18	17	16	15	14	15	15	14	13	13	12
% of Congregations with more than 500 Members	23.4%	22.4%	21.1%	20.0%	18.4%	19.7%	19.7%	18.7%	17.8%	18.1%	16.7%
Net Change in Membership from Prior Year	-524	-697	-799	-492	-482	-608	-474	-806	-142	-750	-837
% Change in Membership from Prior Year	-1.9%	-2.6%	-3.1%	-1.9%	-1.9%	-2.5%	-2.0%	-3.5%	-0.6%	-3.4%	-3.9%
Merged Churches	0	0	0	0	0	0	0	0	0	0	0
Churches Dissolved	1	1	0	1	0	0	0	1	1	1	0
Churches Dismissed	0	0	0	0	0	0	0	0	0	0	0

## Tampa Bay Presbytery - Table 2

### Distribution of Congregations by Membership Size, 2002 - 2012

Membership		2002	2003	2004	2005	2006	2007	2008	2009	2010	2011	2012
Number	1-50	6	6	8	6	8	7	8	8	11	10	11
%	1-50	7.8%	7.9%	10.5%	8.0%	10.5%	9.2%	10.5%	10.7%	15.1%	13.9%	15.3%
Number	51-100	13	14	12	13	13	12	12	15	14	15	16
%	51-100	16.9%	18.4%	15.8%	17.3%	17.1%	15.8%	15.8%	20.0%	19.2%	20.8%	22.2%
Number	101-150	9	9	13	13	14	16	15	13	12	10	8
%	101-150	11.7%	11.8%	17.1%	17.3%	18.4%	21.1%	19.7%	17.3%	16.4%	13.9%	11.1%
Number	151-200	10	10	6	6	6	7	9	6	4	5	8
%	151-200	13.0%	13.2%	7.9%	8.0%	7.9%	9.2%	11.8%	8.0%	5.5%	6.9%	11.1%
Number	201-300	8	7	6	6	6	5	5	7	8	9	7
%	201-300	10.4%	9.2%	7.9%	8.0%	7.9%	6.6%	6.6%	9.3%	11.0%	12.5%	9.7%
Number	301-500	13	13	15	16	15	14	11	11	11	10	10
%	301-500	16.9%	17.1%	19.7%	21.3%	19.7%	18.4%	14.5%	14.7%	15.1%	13.9%	13.9%
Number	501-800	12	10	11	9	8	10	10	9	8	9	8
%	501-800	15.6%	13.2%	14.5%	12.0%	10.5%	13.2%	13.2%	12.0%	11.0%	12.5%	11.1%
Number	801-1200	4	4	2	4	4	3	3	3	3	2	2
%	801-1200	5.2%	5.3%	2.6%	5.3%	5.3%	3.9%	3.9%	4.0%	4.1%	2.8%	2.8%
Number	1201-1600	0	1	2	1	1	1	1	1	1	1	1
%	1201-1600	0.0%	1.3%	2.6%	1.3%	1.3%	1.3%	1.3%	1.3%	1.4%	1.4%	1.4%
Number	1601-2000	1	1	0	0	0	0	0	0	0	0	0
%	1601-2000	1.3%	1.3%	0.0%	0.0%	0.0%	0.0%	0.0%	0.0%	0.0%	0.0%	0.0%
Number	> 2000	1	1	1	1	1	1	1	1	1	1	1
%	> 2000	1.3%	1.3%	1.3%	1.3%	1.3%	1.3%	1.3%	1.3%	1.4%	1.4%	1.4%
Total Number of Congregations		77	76	76	75	76	76	76	75	73	72	72



## Tampa Bay Presbytery - Table 3

### Distribution of Congregations by Average Weekly Worship Attendance, 2002 - 2012

Average Worship Attendance		2002	2003	2004	2005	2006	2007	2008	2009	2010	2011	2012
Number	1-50	10	12	9	11	8	16	22	22	13	13	15
%	1-50	16.1%	19.7%	14.8%	15.9%	15.1%	21.9%	20.3%	22.5%	19.1%	20.6%	22.7%
Number	51-100	13	15	10	13	9	13	15	13	14	14	13
%	51-100	21.0%	24.6%	16.4%	18.8%	17.0%	17.8%	21.7%	18.3%	20.6%	22.2%	19.7%
Number	101-150	10	8	13	9	9	14	12	12	12	11	14
%	101-150	16.1%	13.1%	21.3%	13.0%	17.0%	19.2%	17.4%	16.9%	17.6%	17.5%	21.2%
Number	151-200	4	5	4	9	3	5	5	8	9	6	5
%	151-200	6.5%	8.2%	6.6%	13.0%	5.7%	6.8%	7.2%	11.3%	13.2%	9.5%	7.6%
Number	201-300	11	6	9	11	11	8	7	6	5	5	6
%	201-300	17.7%	9.8%	14.8%	15.9%	20.8%	11.0%	10.1%	8.5%	7.4%	7.9%	9.1%
Number	301-500	11	11	13	11	11	13	11	11	11	10	9
%	301-500	17.7%	18.0%	21.3%	15.9%	20.8%	17.8%	15.9%	15.5%	16.2%	15.9%	13.6%
Number	501-800	2	3	1	3	1	2	3	4	2	3	3
%	501-800	3.2%	4.9%	1.6%	4.3%	1.9%	2.7%	4.3%	5.6%	2.9%	4.8%	4.5%
Number	801-1200	1	1	2	1	0	1	1	0	1	1	1
%	801-1200	1.6%	1.6%	3.3%	1.4%	0.0%	1.4%	1.4%	0.0%	1.5%	1.6%	1.5%
Number	1201-1600	0	0	0	1	1	1	1	1	1	0	0
%	1201-1600	0.0%	0.0%	0.0%	1.4%	1.9%	1.4%	1.4%	1.4%	1.5%	0.0%	0.0%
Number	1601-2000	0	0	0	0	0	0	0	0	0	0	0
%	1601-2000	0.0%	0.0%	0.0%	0.0%	0.0%	0.0%	0.0%	0.0%	0.0%	0.0%	0.0%
Number	> 2000	0	0	0	0	0	0	0	0	0	0	0
%	> 2000	0.0%	0.0%	0.0%	0.0%	0.0%	0.0%	0.0%	0.0%	0.0%	0.0%	0.0%
Mean Number of Worshipers		208.8	206.5	221.3	221.9	221.2	196.1	201.9	197.6	199.0	187.2	175.6
Median Number of Worshipers		138.0	120.0	149.0	173.0	175.0	129.0	116.0	123.0	125.5	124.0	112.0
Total Worship Attendance		12,943	12,598	13,497	15,313	11,725	14,315	13,930	14,032	13,532	11,792	11,589
Net Change in Worship from Prior Year		+558	-345	+899	+1,816	-3,588	+2,590	-385	+102	-500	-1,740	-203
% Change in Worship from Prior Year		4.5%	-2.7%	7.1%	13.5%	-23.4%	22.1%	-2.7%	0.7%	-3.6%	-12.9%	-1.7%
Worship Attendance as % of Members		56.6%	61.9%	61.6%	63.4%	61.6%	62.8%	64.2%	64.7%	62.3%	59.0%	58.2%
Membership for Reporting Churches		22,875	20,359	21,916	24,142	19,023	22,804	21,710	21,701	21,720	19,986	19,927
Total Number of Reporting Churches		62	61	61	69	53	73	69	71	68	63	66

**Tampa Bay Presbytery - Table 4**  
**Racial-Ethnic Composition, 2002 - 2012**

	<b>2002</b>	<b>2003</b>	<b>2004</b>	<b>2005</b>	<b>2006</b>	<b>2007</b>	<b>2008</b>	<b>2009</b>	<b>2010</b>	<b>2011</b>	<b>2012</b>
Number of Members	26,809	26,112	25,313	24,821	24,339	23,731	23,257	22,451	22,309	21,559	20,722
Number of Congregations	77	76	76	75	76	76	76	75	73	72	72
Number of Racial/Ethnic Members	1,232	1,203	911	2,092	725	1,679	1,619	1,585	1,722	1,854	1,132
% Racial/Ethnic of All Culturally Identified Members	5.2%	4.6%	4.5%	8.4%	4.2%	7.1%	7.0%	7.1%	8.4%	8.6%	6.1%
Number of African-American Members	347	319	328	355	143	403	344	383	367	449	272
% African-American Members	1.5%	1.2%	1.6%	1.4%	0.8%	1.7%	1.5%	1.7%	1.8%	2.1%	1.5%
Number of Asian Members	81	309	114	762	112	617	628	569	623	663	198
% Asian Members	0.3%	1.2%	0.6%	3.1%	0.6%	2.6%	2.7%	2.5%	3.0%	3.1%	1.1%
Number of Hispanic Members	491	529	423	794	450	573	565	594	648	689	634
% Hispanic Members	2.1%	2.0%	2.1%	3.2%	2.6%	2.4%	2.4%	2.7%	3.2%	3.2%	3.4%
Number of Native American Members	13	14	11	61	10	12	10	12	32	17	9
% Native American Members	0.1%	0.1%	0.1%	0.2%	0.1%	0.1%	0.0%	0.1%	0.2%	0.1%	0.0%
Number of Middle Eastern Members	0	0	0	0	0	0	0	0	0	0	5
% Middle Eastern Members	0.0%	0.0%	0.0%	0.0%	0.0%	0.0%	0.0%	0.0%	0.0%	0.0%	0.0%
Number of Other Members	300	32	35	120	10	74	72	27	52	36	14
% Other Members	1.3%	0.1%	0.2%	0.5%	0.1%	0.3%	0.3%	0.1%	0.3%	0.2%	0.1%
Number of White, non-Hispanic Members	22,320	24,923	19,398	22,729	16,523	22,052	21,637	20,824	18,791	19,705	17,382
% White, non-Hispanic Members	94.8%	95.4%	95.5%	91.6%	95.8%	92.9%	93.0%	92.9%	91.6%	91.4%	93.9%
Total Number of Reporting Congregations	63	76	60	75	54	76	75	74	68	72	65

**Tampa Bay Presbytery - Table 5**  
**Congregations with One-Fifth or More Minority Racial/Ethnic Membership, 2002 - 2012**

	2002	2003	2004	2005	2006	2007	2008	2009	2010	2011	2012
African-American: 20% - 49%	2	1	2	1	1	1	1	1	0	0	1
African-American: 50% - 89%	1	1	2	1	0	1	1	1	2	3	1
African-American: 90% +	1	1	1	1	0	1	1	1	1	1	2
Asian: 20% - 49%	1	0	0	0	0	0	0	0	0	0	0
Asian: 50% - 89%	0	0	1	0	0	1	1	1	0	0	0
Asian: 90% +	0	2	0	2	1	1	1	1	2	2	1
Hispanic: 20% - 49%	0	0	1	0	0	0	0	0	0	2	1
Hispanic: 50% - 89%	2	1	0	1	1	1	1	1	2	1	1
Hispanic: 90% +	1	1	1	1	1	1	1	1	0	1	1
Native American: 20% - 49%	0	0	0	0	0	0	0	0	0	0	0
Native American: 50% - 89%	0	0	0	0	0	0	0	0	0	0	0
Native American: 90% +	0	0	0	0	0	0	0	0	0	0	0
Middle Eastern: 20% - 49%	0	0	0	0	0	0	0	0	0	0	0
Middle Eastern: 50% - 89%	0	0	0	0	0	0	0	0	0	0	0
Middle Eastern: 90% +	0	0	0	0	0	0	0	0	0	0	0
Other: 20% - 49%	0	0	0	0	0	1	1	0	0	0	0
Other: 50% - 89%	2	0	0	0	0	0	0	0	1	0	0
Other: 90% +	0	0	0	0	0	0	0	0	0	0	0
Total Number of Racial/Ethnic Congregations	9	7	9	11	6	8	8	8	9	9	8
Racial/Ethnic Congregations as % of Total	11.7%	9.2%	11.8%	14.7%	7.9%	10.5%	10.5%	10.7%	12.3%	12.5%	11.1%
Total Number of Congregations	77	76	76	75	76	76	76	75	73	72	72
Total Number of Reporting Congregations	63	76	60	75	54	76	75	74	68	72	65

Total Number of Racial/Ethnic Congregations includes any congregation where at least 20% of the membership is Minority/Racial Ethnic. This may include congregations where no single group exceeds 20% of membership.

**Tampa Bay Presbytery - Table 6**  
**Descriptive Statistics of Teaching Elders, 2002 - 2012**

	2002	2003	2004	2005	2006	2007	2008	2009	2010	2011	2012
Total PCUSA Teaching Elders	208	202	193	229	204	198	191	190	190	183	177
Active Teaching Elders	114	104	101	119	114	109	102	96	101	96	94
Active Teaching Elders as % of Total	54.8%	51.5%	52.3%	52.0%	55.9%	55.1%	53.4%	50.5%	53.2%	52.5%	53.1%
Female Teaching Elders	24	24	23	28	27	29	28	30	32	37	39
% Female Teaching Elders	11.5%	11.9%	11.9%	12.2%	13.2%	14.6%	14.7%	15.8%	16.8%	20.2%	22.0%
Racial/Ethnic Teaching Elders	4	4	4	6	7	7	9	10	11	11	10
% Racial/Ethnic Teaching Elders	2.5%	2.6%	2.8%	3.4%	4.5%	4.6%	6.1%	6.8%	7.2%	7.5%	7.1%
Racial/Ethnic Female Teaching Elders	0	0	0	0	0	0	0	1	1	1	1
% Racial/Ethnic Female Teaching Elders	0.0%	0.0%	0.0%	0.0%	0.0%	0.0%	0.0%	0.7%	0.7%	0.7%	0.7%
Racial/Ethnic Unidentified Teaching Elders	50	50	48	53	47	45	43	42	38	37	36
Pastors/Co-Pastors	69	63	58	62	66	56	55	57	55	49	47
Asst/Associate Pastors	14	11	12	12	15	12	10	11	12	11	10
Supply Pastors	3	3	1	9	1	1	2	3	6	7	8
Interim Pastors	0	4	5	9	3	7	5	0	0	1	3
Chaplains	4	4	4	5	6	9	7	7	7	10	10
PC(USA) Executives	2	2	2	3	4	4	3	2	1	1	1
Schools	1	0	0	0	0	0	0	0	0	0	0
* Counselors	1	0	0	0	0	0	0	0	0	0	0
* Tentmakers	0	0	0	0	0	0	0	0	0	0	0
Other Professionals	2	1	1	5	3	5	4	5	5	6	6
Other	18	16	18	14	16	15	16	11	15	11	9
Retired	94	98	92	110	90	89	89	94	89	87	83

**Tampa Bay Presbytery - Table 7**  
**Membership and Total Contributions, 2002 - 2012**

	<b>2002</b>	<b>2003</b>	<b>2004</b>	<b>2005</b>	<b>2006</b>	<b>2007</b>	<b>2008</b>	<b>2009</b>	<b>2010</b>	<b>2011</b>	<b>2012</b>
Total Contributions (\$)	19,058,757	18,231,114	19,373,587	20,822,933	19,607,160	22,955,405	23,019,097	21,575,110	21,202,091	20,937,795	23,771,770
Total Membership for those Reporting	23,851	21,870	20,788	21,001	20,193	22,441	22,085	21,680	21,768	19,810	18,958
Total Prior Year Membership for those	23,526	23,851	21,870	20,788	21,001	20,193	22,441	22,085	21,680	21,768	19,810
Contributions Per Member (\$)	799.08	833.61	931.96	991.52	970.99	1,022.92	1,042.30	995.16	974.00	1,056.93	1,253.92
Percent Change Per Member from Previous	4.6%	4.3%	11.8%	6.4%	-2.1%	5.3%	1.9%	-4.5%	-2.1%	8.5%	18.6%
Capital and Building Funds Receipts (\$)	4,853,635	3,938,846	2,894,073	4,217,445	3,111,644	4,420,130	1,769,085	1,316,807	2,154,501	1,596,570	639,101
Investment Income (\$)	659,190	931,491	902,318	601,170	910,660	1,179,481	894,907	1,108,576	1,016,144	1,253,847	1,641,733
Bequests (\$)	896,035	919,108	1,283,107	661,682	912,005	2,669,013	1,523,802	1,236,755	1,478,186	1,308,447	912,417
Other Income (\$)	1,671,540	1,739,901	1,976,840	2,406,410	3,564,819	3,943,391	1,895,988	2,144,840	2,970,875	2,662,598	2,683,654
Total Receipts (\$)	27,139,157	25,760,460	26,429,925	28,709,640	28,106,288	35,167,420	29,102,879	27,382,088	28,821,797	27,759,257	29,648,675

**Tampa Bay Presbytery - Table 8**  
**Membership and Local Program and Local Mission Information, 2002 - 2012**

	<b>2002</b>	<b>2003</b>	<b>2004</b>	<b>2005</b>	<b>2006</b>	<b>2007</b>	<b>2008</b>	<b>2009</b>	<b>2010</b>	<b>2011</b>	<b>2012</b>
Total Disbursements to Local Program and Local Mission (\$)	19,620,451	20,484,903	19,016,188	21,597,598	19,944,277	21,667,859	24,741,583	22,327,276	20,893,665	22,329,903	23,370,329
Percent of Total Receipts	72.3%	79.5%	71.9%	75.2%	71.0%	61.6%	85.0%	81.5%	72.5%	80.4%	78.8%
Total Membership for those Reporting Disbursements	23,115	21,740	20,788	20,685	19,761	21,962	21,710	20,694	22,022	19,199	17,584
Disbursements Per Member (\$)	848.82	942.27	914.77	1,044.12	1,009.27	986.61	1,139.64	1,078.93	948.76	1,163.08	1,329.07
Percent Change Per Member from Previous Year	3.2%	11.0%	-2.9%	14.1%	-3.3%	-2.2%	15.5%	-5.3%	-12.1%	22.6%	14.3%
Local Program Expenditures (\$)	18,482,749	19,275,149	17,915,944	20,102,252	18,719,365	20,096,046	23,363,730	21,229,580	20,023,787	21,270,945	22,227,425
Local Mission Expenditures (\$)	1,137,702	1,209,754	1,100,244	1,495,346	1,224,912	1,571,813	1,377,853	1,097,696	869,878	1,058,958	1,142,904
Capital Expenditures (\$)	7,000,556	5,568,549	2,934,826	3,350,157	3,889,068	4,735,852	2,970,496	1,820,094	2,563,139	1,935,549	1,271,437
Investment Expenditures (\$)	749,839	790,026	199,921	433,247	370,336	821,970	198,500	103,592	74,514	120,573	714,130
Per Capita Apportionment (\$)	255,582	274,568	267,537	253,326	244,594	281,434	264,974	317,587	295,749	293,160	378,604
Validated Mission Total (\$)	1,161,697	1,006,651	961,485	1,123,586	846,899	938,276	988,815	904,461	761,678	813,981	814,345
Other Mission Total (\$)	552,275	633,069	1,014,684	940,338	856,453	467,318	657,888	684,294	571,338	726,920	503,321
Total Expenditures (\$)	29,340,400	28,757,766	24,394,641	27,698,252	26,151,627	28,912,709	29,822,256	26,157,304	25,160,083	26,220,086	27,052,166
Total Membership for those Reporting Validated Mission	22,300	20,659	19,158	19,816	18,629	17,502	20,558	16,735	18,606	16,541	15,803
Validated Mission Per Member (\$)	52.09	48.73	50.19	56.70	45.46	53.61	48.10	54.05	40.94	49.21	51.53
Percent Change Per Member from Previous Year	-18.0%	-6.5%	3.0%	13.0%	-19.8%	17.9%	-10.3%	12.4%	-24.3%	20.2%	4.7%

Note: Fields are blank when no data is reported; 0 (zero) may indicate values of zero, missing data, or "not reported."

**Tampa Bay Presbytery - Table 9**  
**Congregations Ranked by Validated Mission Expenditures, 2002 - 2012**

<b>Church, City</b>		<b>2002</b>	<b>2003</b>	<b>2004</b>	<b>2005</b>	<b>2006</b>	<b>2007</b>	<b>2008</b>	<b>2009</b>	<b>2010</b>	<b>2011</b>	<b>2012</b>
Bayshore, Tampa	\$	\$16,920	\$17,585	\$12,724	\$12,640	\$18,932	-	\$18,468	\$3,089	\$17,961	\$13,700	\$1,687
	Rank	(22)	(19)	(22)	(28)	(15)		(16)	(35)	(11)	(13)	(32)
Bel Mar, Tampa	\$	\$1,032	\$971	-	\$2,825	-	-	-	-	-	-	-
	Rank	(51)	(51)		(48)							
Bethel	\$	\$1,368	\$6,848	\$1,000	\$800	\$750	\$750	\$750	\$1,900	\$10,200		
	Rank	(49)	(33)	(51)	(53)	(45)	(49)	(54)	(42)	(21)		
Chapel in the Grove, Lakeland	\$	-	\$9,900	\$2,200	-	\$16,077	\$621	\$190	-	\$190	-	-
	Rank		(25)	(48)		(20)	(50)	(55)		(52)		
Chapel in the Pines, Tampa	\$	\$2,500	\$2,800	-	-	-	-	-	\$196	-	-	-
	Rank	(41)	(44)						(54)			
Christ, Largo	\$	\$30,000	-	\$20,000	\$20,076	\$20,000	\$21,506	\$12,000	\$6,000	\$6,000	-	\$2,061
	Rank	(17)		(19)	(19)	(14)	(18)	(22)	(27)	(30)		(31)
Church of the Reconciler, Clearwater	\$	\$818	\$500	-	-	-	\$440	-	\$605	-	\$2,400	-
	Rank	(53)	(52)				(52)		(50)		(35)	
Church on the Bayou, Tarpon Springs	\$	\$2,170	\$8,146	\$5,950	\$15,800	\$6,525	\$9,400	\$10,090	\$12,631	\$11,454	\$3,710	\$5,999
	Rank	(44)	(30)	(35)	(24)	(31)	(29)	(26)	(17)	(19)	(28)	(22)
Faith, Dunedin	\$	\$4,033	\$4,022	\$4,013								
	Rank	(39)	(39)	(40)								
Faith, Seminole	\$	\$29,543	\$26,491	\$42,377	\$38,541	\$17,018	\$24,123	\$4,275	\$2,108	\$1,500	\$3,000	\$3,400
	Rank	(18)	(16)	(7)	(8)	(17)	(15)	(38)	(39)	(45)	(32)	(29)
First Hispanic, Tampa	\$	\$1,579	\$2,377	-	-	-	-	\$750	\$1,234	-	-	\$700
	Rank	(47)	(45)					(54)	(46)			(38)
First, Auburndale	\$	\$2,880	\$9,318	\$4,987	\$7,975	\$10,480	\$23,058	\$7,083	\$7,362	\$3,600	\$4,543	\$4,471
	Rank	(40)	(28)	(37)	(38)	(24)	(16)	(35)	(23)	(36)	(26)	(26)
First, Bartow	\$	\$9,870	\$9,500	\$9,500	\$9,892	\$13,035	\$12,000	\$11,648	\$9,162	\$8,500	\$8,000	\$8,000
	Rank	(28)	(27)	(25)	(32)	(22)	(24)	(23)	(19)	(24)	(21)	(18)
First, Brandon	\$	\$33,030	-	\$27,076	\$31,266	\$42,177	-	\$41,325	-	\$31,450	\$30,287	\$19,947
	Rank	(14)		(13)	(11)	(7)		(8)		(7)	(8)	(10)

Note: Fields are blank when church did not exist that year; dash (-) indicate missing data, or "not reported."

<b>Church, City</b>		<b>2002</b>	<b>2003</b>	<b>2004</b>	<b>2005</b>	<b>2006</b>	<b>2007</b>	<b>2008</b>	<b>2009</b>	<b>2010</b>	<b>2011</b>	<b>2012</b>
First, Brooksville	\$	\$6,659	\$10,569	\$6,343	\$7,998	-	-	-	\$475	-	-	-
	Rank	(34)	(22)	(34)	(37)				(53)			
First, Crystal River	\$	\$15,033	\$18,500	\$25,000	\$3,735	\$14,000	\$12,000	\$23,586	\$6,382	\$6,000	\$10,877	\$4,662
	Rank	(23)	(18)	(14)	(44)	(21)	(24)	(13)	(25)	(30)	(16)	(25)
First, Dade City	\$	\$6,940	\$8,500	\$8,500	\$8,520	\$6,000	\$14,954	\$9,100	\$8,000	\$3,146	\$3,012	\$1,542
	Rank	(33)	(29)	(29)	(35)	(34)	(22)	(30)	(21)	(37)	(31)	(34)
First, Dunedin	\$	\$30,606	\$1,500	\$15,444	\$15,000	\$44,582	\$30,964	\$109,963	\$76,810	\$33,095	\$210,989	\$111,801
	Rank	(16)	(47)	(21)	(25)	(6)	(10)	(1)	(3)	(5)	(1)	(2)
First, Ft Meade	\$	\$1,059	\$199	\$600	\$1,990	-	\$1,200	\$1,950	\$1,950	\$1,950	\$1,950	-
	Rank	(50)	(53)	(53)	(49)		(47)	(44)	(41)	(42)	(38)	
First, Haines City	\$	-	\$28,946	\$27,839	\$28,457	\$27,365	\$26,107	\$18,500	-	-	\$5,500	\$2,500
	Rank		(14)	(12)	(13)	(12)	(13)	(15)			(25)	(30)
First, Inverness	\$	\$37,820	\$41,024	\$48,109	\$58,219	\$56,711	\$60,469	\$45,000	\$63,458	\$53,052	\$37,249	\$33,015
	Rank	(11)	(10)	(5)	(3)	(3)	(3)	(7)	(5)	(4)	(5)	(6)
First, Lake Alfred	\$	-	\$4,297	-	\$7,904	-	\$1,388	\$12,087	\$5,280	\$1,891	\$1,688	\$1,616
	Rank		(36)		(39)		(45)	(21)	(29)	(43)	(40)	(33)
First, Lakeland	\$	\$117,611	\$64,663	\$92,339	\$99,864	\$62,350	\$60,350	\$56,450	\$136,809	\$124,921	\$108,386	\$108,504
	Rank	(2)	(4)	(1)	(2)	(1)	(4)	(5)	(1)	(1)	(2)	(3)
First, Plant City	\$	\$6,000	\$3,000	\$3,000	\$3,000	\$1,500	\$3,000	\$3,000	\$1,130	\$4,700	-	-
	Rank	(35)	(43)	(45)	(46)	(42)	(36)	(41)	(47)	(34)		
First, Port Richey	\$	\$2,416	\$3,865	\$2,797	\$2,877	\$1,365	\$1,293	\$1,015	\$845	\$759	\$602	\$450
	Rank	(42)	(40)	(46)	(47)	(43)	(46)	(51)	(49)	(48)	(47)	(39)
First, Safety Harbor	\$	-	\$1,450	-	\$1,450	-	\$1,450	\$1,450	\$1,450	-	\$851	\$976
	Rank		(48)		(50)		(43)	(47)	(45)		(46)	(37)
First, St Petersburg	\$	\$118,590	\$71,233	\$63,016	\$38,400	-	\$42,604	\$65,690	\$69,328	\$69,896	\$59,622	-
	Rank	(1)	(2)	(4)	(9)		(7)	(3)	(4)	(2)	(3)	
First, Tampa	\$	\$6,000	\$9,837	\$8,959	-	-	\$11,411	\$10,000	-	-	\$6,000	\$6,645
	Rank	(35)	(26)	(27)			(25)	(28)			(24)	(20)
First, Winter Haven	\$	\$71,620	\$67,876	\$67,722	\$120,189	\$60,607	\$59,499	\$60,931	\$57,845	\$56,892	\$34,154	\$39,000
	Rank	(3)	(3)	(2)	(1)	(2)	(5)	(4)	(6)	(3)	(7)	(5)

Note: Fields are blank when church did not exist that year; dash (-) indicate missing data, or "not reported."



<b>Church, City</b>		<b>2002</b>	<b>2003</b>	<b>2004</b>	<b>2005</b>	<b>2006</b>	<b>2007</b>	<b>2008</b>	<b>2009</b>	<b>2010</b>	<b>2011</b>	<b>2012</b>
First, Zephyrhills	\$	-	-	\$4,000	\$3,000	\$4,860	\$5,000	\$7,632	\$8,070	\$11,300	\$15,500	\$6,600
	Rank			(41)	(46)	(37)	(33)	(33)	(20)	(20)	(10)	(21)
Forest Hills, Tampa	\$	\$22,331	\$28,703	\$32,000	\$18,000	-	\$38,475	\$25,696	\$14,721	\$18,000	\$15,000	\$8,371
	Rank	(20)	(15)	(10)	(22)		(9)	(12)	(14)	(10)	(12)	(17)
Garden Crest, St Petersburg	\$	-	-	\$8,170	\$8,000	-	-	\$8,000	\$5,450	-	-	-
	Rank			(30)	(36)			(32)	(28)			
Good Samaritan, Pinellas Park	\$	\$2,500	-	-	-	\$2,000	\$1,000	\$1,000	\$1,460	\$125	\$1,765	-
	Rank	(41)				(41)	(48)	(52)	(44)	(53)	(39)	
Grace, Spring Hill	\$	\$46,600	\$48,100	\$24,000	\$28,100	-	-	-	\$37,770	\$14,700	-	\$25,512
	Rank	(7)	(7)	(17)	(14)				(7)	(14)		(8)
Gulfport, Gulfport	\$	\$4,263	\$3,657	\$3,753	\$3,482	\$2,497	\$2,201	\$2,112	\$1,673	\$1,342	\$977	\$352
	Rank	(38)	(41)	(43)	(45)	(40)	(38)	(42)	(43)	(46)	(44)	(40)
Highland, Clearwater	\$	\$4,630	\$4,820	\$3,780	\$3,780	\$5,000	\$10,000	\$2,100	\$2,000	\$1,500	\$1,600	-
	Rank	(36)	(34)	(42)	(43)	(36)	(27)	(43)	(40)	(45)	(41)	
Hope, Clearwater	\$	-	\$1,333	-	\$9,000	\$1,500	\$2,000	-	-	-	\$2,500	\$3,802
	Rank		(49)		(34)	(42)	(39)				(34)	(28)
Hope, Winter Haven	\$	\$36,540	\$30,688	\$32,152	\$33,090	\$9,911	\$29,504	\$13,702	\$1,026	\$13,347	-	\$4,350
	Rank	(12)	(13)	(9)	(10)	(25)	(11)	(20)	(48)	(16)		(27)
Hyde Park, Tampa	\$	\$41,871	\$76,480	\$46,048	\$56,290	\$40,323	\$42,223	\$39,719	\$27,868	\$8,146	\$12,205	\$10,489
	Rank	(9)	(1)	(6)	(4)	(8)	(8)	(9)	(9)	(25)	(15)	(15)
John Calvin, Tampa	\$	-	\$146	-	\$146	-	-	-	-	-	-	-
	Rank		(54)		(54)							
Keystone, Odessa	\$	\$1,000	-	-	\$1,020	-	-	\$1,438	\$500	\$731	-	-
	Rank	(52)			(52)			(48)	(52)	(49)		
Korean, Pinellas Park	\$	-	-	-	-	-	\$13,000	-	-	-	\$3,600	-
	Rank						(23)				(29)	
Korean, Tampa	\$	-	-	-	-	-	-	-	-	\$30,000	-	-
	Rank									(8)		
Lake Hamilton, Lake Hamilton	\$	-	-	-	-	-	\$3,300	\$4,410	\$4,000	\$1,000	\$1,178	\$200,000
	Rank						(35)	(37)	(32)	(47)	(42)	(1)

Note: Fields are blank when church did not exist that year; dash (-) indicate missing data, or "not reported."

Church, City		2002	2003	2004	2005	2006	2007	2008	2009	2010	2011	2012
Lake Seminole, Seminole	\$	-	-	\$630	-	-	-	-	\$555	\$669	-	\$50
	Rank			(52)					(51)	(51)		(42)
Lakeside, Tarpon Springs	\$	-	\$32,000	\$33,222	\$26,212	-	-	-				
	Rank		(12)	(8)	(16)							
Lakeview, St Petersburg	\$	\$2,342	\$1,215	\$5,094	\$9,221	\$7,255	\$5,063	-	\$6,500	\$4,738	-	-
	Rank	(43)	(50)	(36)	(33)	(30)	(32)		(24)	(33)		
Maximo, St Petersburg	\$	-	-	-	\$3,000	-	-	\$14,049	-	\$7,400	-	-
	Rank				(46)			(19)		(27)		
McLeod Memorial, Bartow	\$	-	-	-	-	\$3,608	\$4,825	\$4,825	\$4,180	\$5,083	\$4,165	\$10,000
	Rank					(39)	(34)	(36)	(31)	(32)	(27)	(16)
North Lakeland, Lakeland	\$	\$14,004	\$10,237	\$18,985	\$27,832	\$17,246	\$17,565	\$22,632	\$16,500	\$12,800	\$12,800	-
	Rank	(24)	(24)	(20)	(15)	(16)	(20)	(14)	(13)	(17)	(14)	
Northeast, St Petersburg	\$	\$60,500	\$16,490	\$24,239	\$22,846	\$6,271	-	\$933	-	-	-	-
	Rank	(4)	(20)	(16)	(17)	(33)		(53)				
Northwest, St Petersburg	\$	\$1,998	-	-	-	-	-	-	-	\$700	\$2,100	-
	Rank	(45)								(50)	(37)	
Northwood, Clearwater	\$	\$51,000	\$63,000	\$66,000	\$50,363	\$51,262	\$61,000	\$27,426	-	\$2,000	\$3,000	\$5,000
	Rank	(5)	(5)	(3)	(6)	(4)	(2)	(11)		(41)	(32)	(24)
Palm Harbor, Palm Harbor	\$	\$17,292	\$3,595	\$4,500	-	-	\$1,537	\$1,408	\$3,900	\$2,959	-	\$1,050
	Rank	(21)	(42)	(39)			(42)	(49)	(33)	(39)		(36)
Palma Ceia, Tampa	\$	\$12,433	\$7,686	-	-	\$5,070	-	\$98,000	\$120,864	\$28,000	\$29,841	\$53,588
	Rank	(25)	(31)			(35)		(2)	(2)	(9)	(9)	(4)
Parsons Memorial, Yankeetown	\$	\$1,500	\$1,813	\$1,067	\$1,200	\$1,000	\$1,834	\$1,250	\$2,200	\$1,564	\$1,165	\$1,151
	Rank	(48)	(46)	(50)	(51)	(44)	(40)	(50)	(37)	(44)	(43)	(35)
Pasadena, St Petersburg	\$	-	-	\$11,400	\$9,941	\$8,635	\$70,475	-	\$4,787	\$6,864	-	-
	Rank			(24)	(31)	(29)	(1)		(30)	(28)		
PC in the Highlands, Lakeland	\$	\$11,428	-	-	\$10,760	\$9,584	\$9,526	\$7,500	\$6,329	\$5,975	\$8,008	\$5,601
	Rank	(26)			(29)	(27)	(28)	(34)	(26)	(31)	(20)	(23)
PC of Bloomingdale, Brandon	\$	\$500	\$500	\$1,500	\$3,916	\$6,459	\$1,405	\$1,502	\$3,673	\$3,706	\$6,592	\$7,683
	Rank	(54)	(52)	(49)	(42)	(32)	(44)	(46)	(34)	(35)	(23)	(19)

Note: Fields are blank when church did not exist that year; dash (-) indicate missing data, or "not reported."

<b>Church, City</b>		<b>2002</b>	<b>2003</b>	<b>2004</b>	<b>2005</b>	<b>2006</b>	<b>2007</b>	<b>2008</b>	<b>2009</b>	<b>2010</b>	<b>2011</b>	<b>2012</b>
Peace Memorial, Clearwater	\$	\$34,323	-	-	-	-	\$527	\$1,000	-	\$1,000	\$35,456	\$20,000
	Rank	(13)					(51)	(52)		(47)	(6)	(9)
Rio Vista, St Petersburg	\$	-	-	\$2,500	-	-	-					
	Rank			(47)								
Seffner, Seffner	\$	\$9,779	\$7,458	\$7,387	\$6,000	\$4,000	\$6,000	\$11,300	\$7,500	\$9,500	\$3,100	-
	Rank	(29)	(32)	(33)	(41)	(38)	(31)	(24)	(22)	(22)	(30)	
St Andrew, Sun City Cntr	\$	\$1,600	-	\$22,000	\$43,300	\$46,485	\$47,068	\$53,659	\$30,700	\$32,000	\$42,383	\$31,614
	Rank	(46)		(18)	(7)	(5)	(6)	(6)	(8)	(6)	(4)	(7)
St Andrew, Tampa	\$						\$2,781	\$3,596	\$2,162	\$2,354	\$895	-
	Rank						(37)	(39)	(38)	(40)	(45)	
St Andrews, Dunedin	\$	\$41,700	\$41,700	-	\$20,000	\$26,300	\$23,000	\$27,963	-	-	-	-
	Rank	(10)	(9)		(21)	(13)	(17)	(10)				
St John, Tampa	\$	-	-	-	-	-	-	-	-	-	-	-
	Rank											
St Marks, Hudson	\$	-	\$37,484	-	\$16,330	\$16,844	\$16,275	\$10,022	\$8,000	\$8,000	\$8,000	\$8,000
	Rank		(11)		(23)	(18)	(21)	(27)	(21)	(26)	(21)	(18)
Temple Terrace, Temple Terrace	\$	\$9,534	\$4,036	\$9,484	\$10,677	\$11,334	\$11,296	\$3,346	\$21,200	\$16,965	\$9,932	-
	Rank	(30)	(38)	(26)	(30)	(23)	(26)	(40)	(12)	(12)	(18)	
Tims Memorial, Lutz	\$	\$7,813	\$16,038	\$7,564	\$20,074	\$16,722	\$8,357	\$8,531	\$12,493	\$11,718	\$15,008	\$11,945
	Rank	(31)	(21)	(32)	(20)	(19)	(30)	(31)	(18)	(18)	(11)	(13)
Trinity PC Seven Springs, New Port Richey	\$	\$24,850	\$22,800	\$24,900	\$13,900	\$9,900	\$10,000	\$3,000	-	-	-	-
	Rank	(19)	(17)	(15)	(27)	(26)	(27)	(41)				
Trinity, Clearwater	\$	\$47,039	\$49,319	\$3,600	\$53,502	\$39,976	\$28,914	\$18,104	\$21,445	\$8,625	\$10,800	\$12,494
	Rank	(6)	(6)	(44)	(5)	(9)	(12)	(17)	(11)	(23)	(17)	(12)
Trinity, St Petersburg	\$	\$4,388	\$4,200	\$4,965	-	-	-	\$1,600	-	-	-	\$100
	Rank	(37)	(37)	(38)				(45)				(41)
Village, Tampa	\$	\$31,482	\$44,143	\$8,000	\$22,000	\$34,114	\$17,872	\$10,100	\$14,000	\$14,379	\$2,127	\$10,651
	Rank	(15)	(8)	(31)	(18)	(10)	(19)	(25)	(15)	(15)	(36)	(14)
Westminster, Lakeland	\$	\$42,799	-	\$29,869	\$29,482	\$29,500	\$26,000	\$15,000	\$23,014	\$15,831	\$8,331	\$13,966
	Rank	(8)		(11)	(12)	(11)	(14)	(18)	(10)	(13)	(19)	(11)

Note: Fields are blank when church did not exist that year; dash (-) indicate missing data, or "not reported."

<b>Church, City</b>		<b>2002</b>	<b>2003</b>	<b>2004</b>	<b>2005</b>	<b>2006</b>	<b>2007</b>	<b>2008</b>	<b>2009</b>	<b>2010</b>	<b>2011</b>	<b>2012</b>
Westminster, New Pt Richey	\$	-	-	-	-	\$464	\$1,666	\$1,600	\$2,572	\$3,100	\$2,591	-
	Rank					(46)	(41)	(45)	(36)	(38)	(33)	
Westminster, St Petersburg	\$	\$7,220	\$4,800	\$8,746	\$7,595	\$9,305	-	\$9,359	\$13,300	\$6,400	\$6,842	\$5,000
	Rank	(32)	(35)	(28)	(40)	(28)		(29)	(16)	(29)	(22)	(24)
Woodlawn, St Petersburg	\$	\$10,141	\$10,293	\$12,435	\$14,109	-	-	-	-	\$2,000	-	-
	Rank	(27)	(23)	(23)	(26)					(41)		

Note: Fields are blank when church did not exist that year; dash (-) indicate missing data, or "not reported."

**Tampa Bay Presbytery - Table 10**  
**Congregations Ranked by Total Receipts, 2002 - 2012**

<b>Church, City</b>		<b>2002</b>	<b>2003</b>	<b>2004</b>	<b>2005</b>	<b>2006</b>	<b>2007</b>	<b>2008</b>	<b>2009</b>	<b>2010</b>	<b>2011</b>	<b>2012</b>
Bayshore, Tampa	\$	\$136,070	\$143,323	\$236,868	\$188,542	\$131,336	-	\$125,444	\$134,303	\$142,088	\$133,135	\$97,450
	Rank	(47)	(46)	(34)	(48)	(48)		(56)	(52)	(49)	(48)	(53)
Bel Mar, Tampa	\$	\$100,649	\$127,705	-	\$113,001	-	\$100,345	-	-	\$107,992	\$99,120	\$89,120
	Rank	(52)	(48)		(55)		(61)			(54)	(54)	(55)
Bethel	\$	\$41,956	\$88,846	\$38,546	\$71,555	\$57,500	\$102,250	\$106,500	\$60,470	\$49,267		
	Rank	(59)	(53)	(59)	(62)	(54)	(60)	(57)	(65)	(65)		
Chapel in the Grove, Lakeland	\$	-	\$151,372	\$586,398	-	\$200,816	\$162,699	\$218,493	\$107,164	\$120,000	\$183,108	\$252,035
	Rank		(45)	(16)		(39)	(52)	(37)	(56)	(53)	(40)	(35)
Chapel in the Pines, Tampa	\$	\$307,571	\$322,416	-	\$318,267	-	\$340,336	-	\$56,548	\$58,008	-	\$66,487
	Rank	(31)	(23)		(31)		(31)		(67)	(64)		(59)
Christ, Largo	\$	\$343,446	-	\$371,635	\$359,428	\$500,540	\$401,076	\$306,525	\$433,847	\$324,921	\$298,600	\$297,946
	Rank	(30)		(30)	(29)	(21)	(28)	(33)	(22)	(32)	(32)	(32)
Church of the Reconciler,	\$	\$60,859	\$65,601	-	\$75,985	-	\$65,977	\$66,043	\$66,496	\$62,900	\$57,400	-
	Rank	(56)	(56)		(59)		(66)	(64)	(63)	(62)	(58)	
Church on the Bayou, Tarpon Springs	\$	\$146,402	\$170,425	\$158,992	\$160,600	\$198,178	\$188,500	\$184,658	\$180,102	\$181,416	\$361,600	\$160,369
	Rank	(45)	(39)	(49)	(51)	(40)	(47)	(43)	(45)	(41)	(26)	(45)
Faith, Dunedin	\$	\$77,237	\$78,393	\$53,584								
	Rank	(55)	(55)	(57)								
Faith, Seminole	\$	\$1,668,209	\$1,138,038	\$1,406,708	\$1,139,008	\$1,135,203	\$1,346,122	\$910,123	\$815,142	\$765,112	\$1,159,180	\$703,896
	Rank	(4)	(4)	(2)	(5)	(4)	(4)	(8)	(8)	(10)	(4)	(11)
First Hispanic, Tampa	\$	\$40,407	\$40,192	\$47,395	\$71,992	\$64,152	\$68,395	\$56,340	\$90,691	\$76,018	\$92,000	\$85,500
	Rank	(60)	(60)	(58)	(61)	(53)	(65)	(65)	(60)	(60)	(55)	(56)
First, Auburndale	\$	\$182,810	\$195,919	\$167,339	\$194,926	\$168,304	\$181,361	\$176,812	\$166,946	\$176,200	\$172,229	\$147,382
	Rank	(39)	(35)	(46)	(47)	(44)	(50)	(45)	(46)	(42)	(43)	(46)
First, Bartow	\$	\$529,463	\$321,229	\$421,927	\$462,922	\$437,013	\$289,029	\$341,016	\$367,342	\$349,923	\$342,549	\$353,872
	Rank	(16)	(25)	(25)	(23)	(25)	(36)	(30)	(30)	(30)	(28)	(23)
First, Brandon	\$	\$563,281	-	\$1,007,307	\$721,351	\$653,060	\$761,155	\$650,777	\$904,431	\$1,261,423	\$906,084	\$806,461
	Rank	(15)		(5)	(8)	(16)	(13)	(12)	(7)	(4)	(9)	(8)

Note: Fields are blank when church did not exist that year; dash (-) indicate missing data, or "not reported."

Church, City		2002	2003	2004	2005	2006	2007	2008	2009	2010	2011	2012
First, Brooksville	\$	\$116,033	\$160,176	\$105,384	\$91,829	-	\$103,102	\$90,940	\$102,702	\$47,975	-	\$244
	Rank	(49)	(44)	(53)	(57)		(59)	(60)	(58)	(66)		(65)
First, Crystal River	\$	\$300,537	\$278,850	\$250,000	\$261,795	\$242,327	\$246,452	\$236,096	\$269,736	\$105,067	\$227,293	\$269,464
	Rank	(32)	(29)	(33)	(35)	(33)	(40)	(36)	(35)	(56)	(34)	(33)
First, Dade City	\$	\$240,469	\$161,206	\$168,138	\$172,331	\$186,964	\$205,663	\$208,729	\$214,647	\$207,206	\$205,767	\$174,350
	Rank	(35)	(43)	(45)	(50)	(41)	(43)	(38)	(37)	(36)	(36)	(41)
First, Dunedin	\$	\$731,288	\$689,929	\$700,617	\$532,059	\$664,175	\$757,236	\$588,080	\$399,453	\$635,952	\$1,050,413	\$998,354
	Rank	(9)	(12)	(10)	(18)	(15)	(14)	(16)	(27)	(14)	(6)	(4)
First, Ft Meade	\$	\$21,496	\$22,082	\$28,000	\$42,150	-	\$39,000	\$41,112	\$68,600	\$41,000	\$41,000	\$38,000
	Rank	(63)	(63)	(61)	(65)		(69)	(69)	(62)	(68)	(63)	(63)
First, Haines City	\$	-	\$778,969	\$977,374	\$1,028,342	\$1,026,788	\$1,498,166	\$1,271,030	\$1,174,711	\$1,055,869	\$952,649	\$952,282
	Rank		(10)	(7)	(6)	(6)	(3)	(5)	(4)	(7)	(8)	(7)
First, Inverness	\$	\$450,393	\$439,613	\$515,647	\$565,687	\$543,832	\$585,241	\$627,578	\$578,105	\$531,749	\$551,330	\$518,337
	Rank	(19)	(20)	(20)	(16)	(19)	(20)	(13)	(15)	(18)	(14)	(17)
First, Lake Alfred	\$	-	\$207,880	-	\$302,466	-	\$137,837	\$130,126	\$144,660	\$123,058	\$146,251	\$115,503
	Rank		(34)		(32)		(55)	(52)	(49)	(52)	(46)	(52)
First, Lakeland	\$	\$2,128,500	\$2,268,036	\$2,258,000	\$3,221,991	\$3,113,568	\$4,301,019	\$2,096,710	\$2,003,482	\$2,063,277	\$2,112,674	\$2,195,410
	Rank	(2)	(2)	(1)	(1)	(1)	(1)	(1)	(1)	(1)	(2)	(3)
First, Plant City	\$	\$387,825	\$169,702	\$201,454	\$211,598	\$227,884	\$254,170	\$204,173	\$197,000	\$203,000	\$193,856	\$187,000
	Rank	(24)	(40)	(36)	(44)	(34)	(39)	(39)	(39)	(37)	(38)	(38)
First, Port Richey	\$	\$141,198	\$118,155	\$125,427	\$147,599	\$121,101	\$123,075	\$129,753	\$105,166	\$107,713	\$88,545	\$82,608
	Rank	(46)	(50)	(51)	(53)	(49)	(57)	(53)	(57)	(55)	(56)	(57)
First, Safety Harbor	\$	-	\$210,539	\$276,923	\$226,480	-	\$264,476	\$283,929	\$298,982	\$28,536	\$43,944	\$63,221
	Rank		(33)	(32)	(41)		(38)	(34)	(33)	(70)	(62)	(60)
First, St Petersburg	\$	\$1,750,557	\$1,483,982	\$1,339,335	\$1,591,232	-	\$1,276,205	\$1,308,187	\$1,697,496	\$1,645,736	\$1,269,061	-
	Rank	(3)	(3)	(3)	(2)		(6)	(4)	(3)	(3)	(3)	
First, Tampa	\$	\$368,793	\$495,177	\$591,508	-	-	\$737,382	\$584,957	-	\$681,016	\$750,225	\$683,984
	Rank	(26)	(16)	(15)			(15)	(17)		(11)	(11)	(12)
First, Winter Haven	\$	\$922,546	\$966,836	\$1,167,661	\$1,468,155	\$1,273,083	\$1,285,318	\$1,259,708	\$937,632	\$1,030,454	\$1,015,808	\$968,235
	Rank	(7)	(7)	(4)	(3)	(3)	(5)	(6)	(6)	(8)	(7)	(6)
First, Zephyrhills	\$	-	-	\$187,845	\$229,494	\$275,551	\$296,521	\$153,879	\$135,919	\$183,129	\$128,088	\$143,307
	Rank			(41)	(39)	(31)	(35)	(48)	(51)	(40)	(50)	(47)

Note: Fields are blank when church did not exist that year; dash (-) indicate missing data, or "not reported."

<b>Church, City</b>		<b>2002</b>	<b>2003</b>	<b>2004</b>	<b>2005</b>	<b>2006</b>	<b>2007</b>	<b>2008</b>	<b>2009</b>	<b>2010</b>	<b>2011</b>	<b>2012</b>
Forest Hills, Tampa	\$	\$375,099	\$394,584	\$496,743	-	-	\$618,498	\$515,891	\$428,683	\$381,945	\$395,550	\$338,423
	Rank	(25)	(21)	(22)			(19)	(22)	(23)	(27)	(23)	(24)
Garden Crest, St Petersburg	\$	-	-	\$188,270	\$228,699	\$174,278	\$324,739	\$188,067	\$149,612	\$139,055	-	-
	Rank			(40)	(40)	(43)	(33)	(42)	(47)	(50)		
Good Samaritan, Pinellas Park	\$	\$113,611	\$120,537	\$70,499	\$74,373	\$85,789	\$81,717	\$87,311	\$115,850	\$79,981	\$79,297	\$124,388
	Rank	(50)	(49)	(56)	(60)	(50)	(63)	(61)	(54)	(59)	(57)	(48)
Grace, Spring Hill	\$	\$434,335	\$471,223	\$405,000	\$426,035	-	-	-	\$534,911	\$411,719	-	\$448,480
	Rank	(20)	(18)	(26)	(25)				(18)	(25)		(20)
Gulfport, Gulfport	\$	\$50,424	\$52,413	\$86,373	\$98,629	\$45,009	\$69,608	\$52,567	\$57,096	\$59,309	\$51,278	\$75,049
	Rank	(57)	(57)	(54)	(56)	(55)	(64)	(67)	(66)	(63)	(60)	(58)
Highland, Clearwater	\$	\$153,516	\$220,373	\$189,412	\$250,400	\$203,600	\$182,100	\$195,830	\$307,500	\$183,300	\$177,200	\$174,300
	Rank	(44)	(31)	(39)	(36)	(38)	(48)	(41)	(32)	(39)	(42)	(42)
Hope, Clearwater	\$	\$184,329	\$217,454	-	\$231,605	\$242,962	\$233,874	-	\$192,541	\$222,858	\$154,846	\$167,349
	Rank	(38)	(32)		(38)	(32)	(41)		(40)	(34)	(45)	(44)
Hope, Winter Haven	\$	\$395,022	\$171,682	\$517,576	\$532,065	\$463,809	\$696,667	\$471,216	\$562,161	\$514,028	\$465,939	\$522,625
	Rank	(23)	(38)	(19)	(17)	(24)	(16)	(25)	(17)	(20)	(21)	(15)
Hyde Park, Tampa	\$	\$730,682	\$738,544	\$713,145	\$686,067	\$784,073	\$681,572	\$600,111	\$630,502	\$603,161	\$544,289	\$521,968
	Rank	(10)	(11)	(9)	(9)	(10)	(17)	(15)	(11)	(16)	(15)	(16)
John Calvin, Tampa	\$	-	\$47,563	-	\$50,403	\$38,000	\$39,682	\$36,989	\$40,610			
	Rank		(59)		(64)	(56)	(68)	(70)	(70)			
Keystone, Odessa	\$	\$96,824	\$84,065	-	\$335,896	\$276,000	\$226,000	\$78,736	\$44,000	\$41,417	\$30,534	\$41,300
	Rank	(53)	(54)		(30)	(30)	(42)	(62)	(68)	(67)	(64)	(62)
Korean, Pinellas Park	\$	-	-	-	-	-	\$200,200	-	-	-	\$196,258	\$187,600
	Rank						(45)				(37)	(37)
Korean, Tampa	\$	-	-	\$485,000	\$620,000	\$950,000	\$832,436	\$784,951	\$690,566	-	-	\$727,000
	Rank			(24)	(13)	(7)	(10)	(9)	(9)			(9)
Lake Hamilton, Lake Hamilton	\$	\$26,940	\$24,286	-	-	\$30,650	\$35,200	\$54,900	\$62,400	\$66,793	\$254,097	\$5,130,000
	Rank	(62)	(62)			(57)	(70)	(66)	(64)	(61)	(33)	(1)
Lake Seminole, Seminole	\$	\$172,159	\$166,720	\$166,200	\$205,120	\$177,651	\$191,677	\$138,465	\$139,504	\$166,508	\$140,828	\$173,727
	Rank	(42)	(42)	(47)	(45)	(42)	(46)	(50)	(50)	(46)	(47)	(43)
Lakeside, Tarpon Springs	\$	-	\$466,707	\$491,663	\$577,305	\$544,041	-	\$539,550				
	Rank		(19)	(23)	(15)	(18)		(20)				

Note: Fields are blank when church did not exist that year; dash (-) indicate missing data, or "not reported."

<b>Church, City</b>		<b>2002</b>	<b>2003</b>	<b>2004</b>	<b>2005</b>	<b>2006</b>	<b>2007</b>	<b>2008</b>	<b>2009</b>	<b>2010</b>	<b>2011</b>	<b>2012</b>
Lakeview, St Petersburg	\$ Rank	\$185,165 (37)	\$279,180 (28)	\$182,460 (42)	\$182,702 (49)	\$285,172 (29)	\$167,638 (51)	\$162,933 (46)	\$189,000 (42)	\$175,331 (44)	-	-
Maximo, St Petersburg	\$ Rank	-	-	-	\$277,000 (34)	-	\$333,873 (32)	\$314,496 (32)	\$298,190 (34)	\$330,181 (31)	-	\$309,200 (29)
McLeod Memorial, Bartow	\$ Rank	-	-	\$75,143 (55)	\$78,412 (58)	\$71,094 (51)	-	\$94,960 (59)	\$86,614 (61)	\$89,366 (58)	\$117,530 (51)	\$117,530 (50)
North Lakeland, Lakeland	\$ Rank	\$497,280 (18)	\$638,716 (13)	\$579,570 (17)	\$637,916 (12)	\$686,628 (13)	\$813,075 (11)	\$733,422 (10)	\$669,829 (10)	\$638,897 (13)	\$710,243 (12)	\$570,480 (13)
Northeast, St Petersburg	\$ Rank	\$918,251 (8)	\$1,055,844 (5)	\$885,719 (8)	\$1,209,886 (4)	\$840,674 (8)	\$320,762 (34)	\$430,737 (27)	\$389,050 (28)	\$434,500 (24)	\$495,300 (19)	\$509,720 (18)
Northwest, St Petersburg	\$ Rank	\$160,852 (43)	-	-	-	-	\$134,624 (56)	\$97,245 (58)	\$101,690 (59)	\$127,944 (51)	\$112,639 (52)	\$119,701 (49)
Northwood, Clearwater	\$ Rank	\$982,889 (5)	\$1,046,609 (6)	\$990,289 (6)	\$1,014,855 (7)	\$1,045,203 (5)	\$1,096,000 (9)	\$971,338 (7)	\$999,301 (5)	\$1,140,751 (6)	\$1,155,731 (5)	\$968,487 (5)
Palm Harbor, Palm Harbor	\$ Rank	\$345,920 (28)	\$322,162 (24)	\$293,203 (31)	\$300,402 (33)	-	\$499,250 (23)	\$436,141 (26)	\$367,424 (29)	\$438,109 (23)	\$332,412 (29)	\$325,958 (26)
Palma Ceia, Tampa	\$ Rank	\$2,587,654 (1)	\$2,313,081 (1)	-	-	\$2,789,766 (2)	\$2,486,820 (2)	\$1,907,197 (2)	\$1,750,000 (2)	\$2,062,798 (2)	\$2,948,876 (1)	\$2,429,323 (2)
Parsons Memorial, Yankeetown	\$ Rank	\$45,806 (58)	\$47,853 (58)	\$37,900 (60)	\$53,518 (63)	-	\$49,716 (67)	\$42,550 (68)	\$43,714 (69)	\$39,383 (69)	\$55,686 (59)	\$42,902 (61)
Pasadena, St Petersburg	\$ Rank	\$569,866 (13)	-	\$624,681 (14)	\$500,642 (19)	\$787,548 (9)	\$572,387 (21)	\$425,309 (28)	\$404,765 (26)	\$377,655 (28)	\$328,170 (30)	\$301,391 (31)
PC in the Highlands, Lakeland	\$ Rank	\$345,011 (29)	-	-	\$363,315 (28)	\$296,350 (28)	\$269,700 (37)	\$244,843 (35)	\$257,797 (36)	\$630,260 (15)	\$300,428 (31)	\$311,481 (28)
PC of Bloomingdale, Brandon	\$ Rank	\$179,238 (41)	\$167,035 (41)	\$172,631 (44)	\$212,712 (43)	\$211,098 (36)	\$181,817 (49)	\$195,885 (40)	\$185,468 (44)	\$175,546 (43)	\$182,689 (41)	\$188,070 (36)
Peace Memorial, Clearwater	\$ Rank	\$685,816 (12)	\$629,997 (14)	\$549,546 (18)	\$612,000 (14)	\$707,699 (11)	\$1,270,474 (7)	\$567,500 (18)	\$593,558 (14)	\$665,319 (12)	\$591,156 (13)	\$485,986 (19)
Rio Vista, St Petersburg	\$ Rank	\$88,635 (54)	\$137,000 (47)	\$108,700 (52)	-	\$70,200 (52)	-	-	-	-	-	-
Seffner, Seffner	\$ Rank	\$182,122 (40)	\$187,276 (36)	\$178,597 (43)	\$226,064 (42)	\$210,650 (37)	\$201,557 (44)	\$177,069 (44)	\$199,000 (38)	\$192,000 (38)	\$212,000 (35)	-

Note: Fields are blank when church did not exist that year; dash (-) indicate missing data, or "not reported."



Church, City		2002	2003	2004	2005	2006	2007	2008	2009	2010	2011	2012
St Andrew, Sun City Cntr	\$ Rank	\$568,772 (14)	-	\$694,714 (11)	\$680,853 (10)	\$701,316 (12)	\$784,119 (12)	\$654,885 (11)	\$601,243 (12)	\$491,821 (22)	\$516,164 (18)	\$535,994 (14)
St Andrew, Tampa	\$ Rank						\$450,084 (26)	\$381,810 (29)	\$335,382 (31)	\$303,001 (33)	\$383,452 (24)	\$304,827 (30)
St Andrews, Dunedin	\$ Rank	\$709,033 (11)	\$492,777 (17)	\$387,000 (28)	\$452,557 (24)	\$465,376 (23)	\$463,738 (25)	\$527,384 (21)	\$516,555 (19)	\$590,461 (17)	\$537,066 (17)	-
St John, Tampa	\$ Rank	-	\$36,000 (61)	-	\$121,595 (54)	\$138,000 (46)	\$112,594 (58)	\$125,651 (55)	\$110,540 (55)	\$97,363 (57)	\$100,944 (53)	\$91,990 (54)
St Marks, Hudson	\$ Rank	-	\$951,062 (8)	-	\$368,714 (27)	\$470,778 (22)	\$1,184,930 (8)	\$479,919 (24)	\$478,592 (21)	\$520,025 (19)	\$494,838 (20)	\$406,476 (22)
Temple Terrace, Temple Terrace	\$ Rank	\$256,779 (34)	\$292,945 (27)	\$503,005 (21)	\$385,153 (26)	\$386,516 (26)	\$378,756 (29)	\$333,103 (31)	\$600,213 (13)	\$371,769 (29)	\$360,307 (27)	\$266,600 (34)
Tims Memorial, Lutz	\$ Rank	\$401,979 (22)	\$296,966 (26)	\$374,011 (29)	\$478,725 (22)	\$641,315 (17)	\$492,315 (24)	\$565,648 (19)	\$480,501 (20)	\$928,994 (9)	\$361,831 (25)	\$328,241 (25)
Trinity PC Seven Springs, New Port	\$ Rank	\$513,556 (17)	\$542,929 (15)	\$641,242 (13)	\$482,041 (21)	\$505,375 (20)	\$510,859 (22)	\$498,546 (23)	\$428,083 (24)	\$501,520 (21)	\$539,137 (16)	\$430,619 (21)
Trinity, Clearwater	\$ Rank	\$927,614 (6)	\$837,327 (9)	\$645,943 (12)	\$676,799 (11)	\$684,650 (14)	\$640,679 (18)	\$615,955 (14)	\$569,197 (16)	\$1,169,877 (5)	\$836,936 (10)	\$717,699 (10)
Trinity, St Petersburg	\$ Rank	\$122,151 (48)	\$105,686 (52)	\$127,408 (50)	-	-	\$98,315 (62)	\$74,754 (63)	-	-	\$50,490 (61)	\$600 (64)
Village, Tampa	\$ Rank	\$428,451 (21)	\$381,725 (22)	\$398,069 (27)	\$490,189 (20)	\$365,300 (27)	\$370,868 (30)	\$1,382,717 (3)	\$408,144 (25)	\$399,681 (26)	\$456,267 (22)	\$323,050 (27)
Westminster, Lakeland	\$ Rank	\$261,882 (33)	-	\$192,281 (38)	\$234,433 (37)	\$214,911 (35)	\$426,460 (27)	\$134,800 (51)	\$187,316 (43)	\$170,752 (45)	\$130,900 (49)	\$182,934 (39)
Westminster, New Pt Richey	\$ Rank	\$350,565 (27)	\$240,097 (30)	\$228,846 (35)	-	\$133,206 (47)	\$154,101 (53)	\$157,461 (47)	\$147,678 (48)	\$163,768 (47)	\$164,778 (44)	\$116,862 (51)
Westminster, St Petersburg	\$ Rank	\$100,739 (51)	\$109,475 (51)	\$163,158 (48)	\$153,699 (52)	\$160,226 (45)	-	\$126,319 (54)	\$192,535 (41)	\$212,646 (35)	\$188,062 (39)	\$179,528 (40)
Woodlawn, St Petersburg	\$ Rank	\$193,395 (36)	\$177,976 (37)	\$195,916 (37)	\$198,745 (46)	-	\$151,000 (54)	\$140,000 (49)	\$123,000 (53)	\$146,000 (48)	-	-

Note: Fields are blank when church did not exist that year; dash (-) indicate missing data, or "not reported."

**Tampa Bay Presbytery - Table 11**  
**Congregations Ranked by Per Member Giving, 2002 - 2012**

<b>Church, City</b>		<b>2002</b>	<b>2003</b>	<b>2004</b>	<b>2005</b>	<b>2006</b>	<b>2007</b>	<b>2008</b>	<b>2009</b>	<b>2010</b>	<b>2011</b>	<b>2012</b>
Bayshore, Tampa	\$ Rank	\$845.27 (32)	\$785.86 (37)	\$1,331.63 (7)	\$1,337.63 (12)	\$1,435.76 (7)	- (17)	\$1,368.45 (17)	\$1,350.42 (16)	\$1,443.39 (12)	\$1,369.43 (15)	\$885.96 (47)
Bel Mar, Tampa	\$ Rank	\$966.58 (21)	\$1,314.54 (8)	- (7)	\$1,122.18 (26)	- (7)	\$1,173.91 (24)	- (17)	- (16)	\$1,060.61 (36)	\$923.08 (45)	\$793.65 (57)
Bethel	\$ Rank	\$1,084.41 (15)	\$1,141.20 (15)	\$1,211.50 (12)	\$1,051.11 (33)	\$1,217.95 (13)	\$682.93 (66)	\$1,081.08 (31)	\$1,020.30 (35)	\$1,100.93 (32)		
Chapel in the Grove, Lakeland	\$ Rank	- (1)	\$1,745.63 (1)	\$939.76 (30)	- (30)	\$822.15 (36)	\$672.03 (67)	\$809.95 (59)	\$764.01 (63)	\$1,114.29 (31)	\$1,266.39 (21)	\$1,153.85 (34)
Chapel in the Pines, Tampa	\$ Rank	\$881.73 (29)	\$806.72 (34)	- (34)	\$640.93 (60)	- (60)	\$861.61 (49)	- (49)	\$948.65 (43)	\$872.24 (52)	- (52)	\$811.19 (56)
Christ, Largo	\$ Rank	\$768.74 (38)	- (38)	\$793.15 (45)	\$835.39 (51)	\$900.76 (35)	\$882.92 (46)	\$1,066.75 (33)	\$1,025.84 (33)	\$1,180.62 (24)	\$1,058.70 (37)	\$1,178.69 (32)
Church of the Reconciler, Clearwater	\$ Rank	\$713.54 (42)	\$1,051.00 (21)	- (42)	\$1,489.90 (7)	- (42)	\$863.30 (48)	\$1,291.08 (22)	\$1,302.40 (20)	\$1,154.76 (28)	\$1,194.44 (28)	- (28)
Church on the Bayou, Tarpon Springs	\$ Rank	\$956.80 (22)	\$961.46 (25)	\$865.72 (39)	\$1,096.83 (29)	\$1,087.41 (21)	\$1,349.55 (13)	\$1,535.68 (10)	\$1,309.09 (19)	\$1,528.85 (6)	\$1,949.45 (2)	\$2,238.70 (3)
Faith, Dunedin	\$ Rank	\$1,161.63 (10)	\$1,165.74 (14)	\$971.04 (28)								
Faith, Seminole	\$ Rank	\$847.68 (31)	\$855.61 (31)	\$1,038.12 (19)	\$788.20 (52)	\$928.98 (30)	\$840.11 (53)	\$881.01 (54)	\$810.76 (57)	\$772.44 (58)	\$743.74 (59)	\$834.93 (54)
First Hispanic, Tampa	\$ Rank	\$555.58 (59)	\$587.20 (58)	\$734.76 (52)	\$1,145.10 (24)	\$781.41 (42)	\$835.98 (55)	\$770.67 (63)	\$802.30 (59)	\$778.03 (57)	\$985.71 (43)	\$941.18 (45)
First, Auburndale	\$ Rank	\$899.25 (28)	\$803.22 (35)	\$832.95 (41)	\$879.08 (45)	\$913.83 (33)	\$963.60 (40)	\$927.94 (49)	\$969.79 (41)	\$1,090.91 (33)	\$1,199.83 (26)	\$1,039.16 (40)
First, Bartow	\$ Rank	\$1,382.25 (1)	\$1,397.46 (5)	\$1,462.00 (5)	\$1,674.57 (4)	\$1,561.83 (6)	\$1,133.14 (28)	\$1,579.12 (7)	\$1,893.50 (3)	\$1,785.69 (2)	\$1,578.62 (4)	\$1,659.10 (10)
First, Brandon	\$ Rank	\$911.92 (25)	- (25)	\$984.45 (25)	\$1,174.51 (20)	\$1,141.31 (16)	\$1,155.31 (25)	\$1,249.06 (23)	\$1,293.98 (21)	\$1,206.36 (21)	\$1,188.19 (29)	\$1,288.76 (27)

Note: Fields are blank when church did not exist that year; dash (-) indicate missing data, or "not reported."

Church, City		2002	2003	2004	2005	2006	2007	2008	2009	2010	2011	2012
First, Brooksville	\$	\$1,161.83	\$1,059.20	\$1,080.46	\$785.52	-	\$1,096.83	\$1,033.41	\$862.32	\$444.22	-	\$5.08
	Rank	(9)	(19)	(17)	(53)		(30)	(37)	(52)	(69)		(65)
First, Crystal River	\$	\$547.59	\$651.13	\$656.00	\$759.19	\$786.24	\$760.00	\$868.51	\$831.38	\$284.61	\$1,344.66	\$1,865.83
	Rank	(60)	(48)	(57)	(56)	(41)	(60)	(55)	(55)	(70)	(17)	(5)
First, Dade City	\$	\$979.52	\$591.85	\$586.39	\$775.96	\$926.66	\$1,196.02	\$1,118.62	\$1,161.37	\$1,142.15	\$1,167.93	\$1,095.53
	Rank	(20)	(57)	(60)	(54)	(32)	(22)	(28)	(26)	(29)	(31)	(38)
First, Dunedin	\$	\$905.85	\$774.55	\$846.09	\$877.74	\$807.94	\$946.76	\$923.35	\$767.72	\$846.20	\$875.64	\$930.14
	Rank	(26)	(39)	(40)	(46)	(39)	(42)	(50)	(62)	(55)	(50)	(46)
First, Ft Meade	\$	\$580.97	\$576.11	\$634.15	\$852.38	-	\$857.14	\$906.71	\$918.92	\$1,214.29	\$1,214.29	\$1,357.14
	Rank	(57)	(60)	(58)	(48)		(50)	(52)	(49)	(20)	(25)	(24)
First, Haines City	\$	-	\$830.26	\$995.25	\$1,056.40	\$955.41	\$845.24	\$775.97	\$882.69	\$759.55	\$1,383.66	\$1,598.81
	Rank		(33)	(23)	(32)	(28)	(51)	(61)	(51)	(63)	(14)	(11)
First, Inverness	\$	\$593.82	\$615.44	\$781.80	\$836.78	\$812.92	\$882.34	\$752.39	\$708.65	\$714.12	\$829.69	\$856.02
	Rank	(54)	(54)	(48)	(50)	(37)	(47)	(64)	(65)	(64)	(55)	(52)
First, Lake Alfred	\$	-	\$1,198.78	-	\$1,225.94	-	\$992.37	\$773.42	\$927.31	\$764.71	\$1,001.75	\$1,360.51
	Rank		(13)		(16)		(39)	(62)	(48)	(62)	(41)	(23)
First, Lakeland	\$	\$981.73	\$1,051.24	\$1,169.98	\$1,338.93	\$1,344.81	\$1,363.50	\$1,382.98	\$1,324.05	\$1,296.45	\$1,325.42	\$1,371.11
	Rank	(19)	(20)	(13)	(11)	(9)	(11)	(16)	(18)	(18)	(18)	(21)
First, Plant City	\$	\$1,125.08	\$791.05	\$1,034.45	\$1,154.60	\$1,124.91	\$1,091.54	\$1,107.11	\$1,032.79	\$968.59	\$989.64	\$1,121.79
	Rank	(12)	(36)	(21)	(22)	(17)	(31)	(29)	(32)	(44)	(42)	(37)
First, Port Richey	\$	\$609.16	\$683.32	\$772.86	\$947.09	\$954.01	\$896.47	\$991.67	\$985.06	\$1,022.34	\$1,152.12	\$1,147.49
	Rank	(52)	(47)	(49)	(41)	(29)	(45)	(40)	(39)	(39)	(32)	(35)
First, Safety Harbor	\$	-	\$1,610.72	\$1,253.40	\$1,440.00	-	\$1,809.30	\$2,095.95	\$1,822.12	\$944.36	\$1,515.15	\$1,494.94
	Rank		(3)	(9)	(8)		(3)	(3)	(4)	(46)	(7)	(13)
First, St Petersburg	\$	\$868.85	\$929.52	\$1,035.52	\$1,056.90	-	\$1,196.97	\$1,362.06	\$1,340.45	\$1,353.33	\$1,349.91	-
	Rank	(30)	(28)	(20)	(31)		(21)	(18)	(17)	(15)	(16)	
First, Tampa	\$	\$1,351.53	\$1,286.05	\$1,253.34	-	-	\$1,405.55	\$1,226.01	-	\$1,315.15	\$1,291.26	\$1,190.93
	Rank	(2)	(9)	(10)			(10)	(26)		(16)	(19)	(31)
First, Winter Haven	\$	\$655.18	\$747.44	\$796.16	\$853.85	\$811.60	\$1,010.08	\$988.93	\$824.44	\$889.11	\$920.08	\$882.27
	Rank	(47)	(42)	(44)	(47)	(38)	(38)	(41)	(56)	(51)	(46)	(49)

Note: Fields are blank when church did not exist that year; dash (-) indicate missing data, or "not reported."

Church, City		2002	2003	2004	2005	2006	2007	2008	2009	2010	2011	2012
First, Zephyrhills	\$	-	-	\$820.17	\$1,216.27	\$792.04	\$816.38	\$1,057.12	\$1,037.76	\$1,053.50	\$936.42	\$1,280.55
	Rank			(43)	(17)	(40)	(57)	(35)	(30)	(38)	(44)	(29)
Forest Hills, Tampa	\$	\$905.47	\$970.29	\$991.41	-	-	\$1,087.79	\$1,027.03	\$1,001.68	\$999.55	\$882.74	\$882.47
	Rank	(27)	(24)	(24)			(33)	(38)	(36)	(41)	(49)	(48)
Garden Crest, St Petersburg	\$	-	-	\$1,146.72	\$1,189.93	\$1,079.33	\$904.07	\$1,487.43	\$573.65	\$1,200.48	-	-
	Rank			(15)	(18)	(22)	(44)	(11)	(69)	(23)		
Good Samaritan, Pinellas Park	\$	\$916.22	\$942.27	\$1,028.28	\$1,003.78	\$1,354.42	\$1,354.26	\$1,346.78	\$1,386.79	\$1,562.52	\$1,559.37	\$1,814.11
	Rank	(24)	(27)	(22)	(36)	(8)	(12)	(20)	(15)	(5)	(5)	(6)
Grace, Spring Hill	\$	\$561.16	\$615.17	\$551.77	\$427.22	-	-	-	\$572.49	\$543.68	-	\$655.67
	Rank	(58)	(55)	(61)	(65)				(70)	(68)		(61)
Gulfport, Gulfport	\$	\$819.95	\$644.52	\$763.77	\$689.69	\$655.53	\$693.20	\$888.50	\$1,216.26	\$1,241.61	\$1,226.96	\$1,561.48
	Rank	(34)	(50)	(50)	(59)	(54)	(65)	(53)	(23)	(19)	(24)	(12)
Highland, Clearwater	\$	\$676.63	\$642.51	\$688.86	\$1,157.83	\$572.29	\$528.66	\$569.41	\$785.71	\$847.46	\$849.06	\$1,055.56
	Rank	(44)	(52)	(56)	(21)	(55)	(70)	(69)	(61)	(54)	(53)	(39)
Hope, Clearwater	\$	\$583.50	\$646.27	-	\$838.63	\$779.13	\$1,238.59	-	\$950.62	\$975.31	\$849.52	\$792.25
	Rank	(56)	(49)		(49)	(43)	(18)		(42)	(43)	(52)	(58)
Hope, Winter Haven	\$	\$639.66	\$237.43	\$874.35	\$879.38	\$710.34	\$836.28	\$817.33	\$803.91	\$764.89	\$811.43	\$832.82
	Rank	(50)	(62)	(38)	(44)	(49)	(54)	(57)	(58)	(61)	(56)	(55)
Hyde Park, Tampa	\$	\$804.13	\$971.31	\$977.62	\$974.34	\$992.27	\$1,071.54	\$984.58	\$1,430.49	\$1,496.53	\$1,393.56	\$1,390.79
	Rank	(36)	(23)	(27)	(39)	(25)	(35)	(42)	(13)	(8)	(13)	(20)
John Calvin, Tampa	\$	-	\$1,076.96	-	\$1,804.90	\$909.09	\$2,204.56	\$1,761.38	\$1,650.42			
	Rank		(18)		(3)	(34)	(2)	(6)	(5)			
Keystone, Odessa	\$	\$1,108.62	\$1,033.62	-	\$1,123.35	\$985.07	\$820.90	\$2,252.80	\$1,571.43	\$1,479.18	\$1,090.50	\$1,700.00
	Rank	(13)	(22)		(25)	(26)	(56)	(2)	(7)	(9)	(34)	(9)
Korean, Pinellas Park	\$	-	-	-	-	-	\$1,449.28	-	-	-	\$1,443.07	\$1,432.06
	Rank						(9)				(10)	(18)
Korean, Tampa	\$	-	-	\$1,978.26	\$2,000.00	\$1,857.14	\$2,249.83	\$1,941.66	\$2,227.63	-	-	\$2,692.59
	Rank			(1)	(2)	(3)	(1)	(4)	(1)			(2)
Lake Hamilton, Lake Hamilton	\$	\$841.88	\$783.42	-	-	\$769.23	\$717.95	\$960.53	\$941.18	\$1,053.66	\$843.95	\$92,500.0
	Rank	(33)	(38)			(44)	(63)	(45)	(47)	(37)	(54)	0

Note: Fields are blank when church did not exist that year; dash (-) indicate missing data, or "not reported."

Church, City		2002	2003	2004	2005	2006	2007	2008	2009	2010	2011	2012
Lake Seminole, Seminole	\$	\$646.88	\$866.41	\$979.29	\$1,292.89	\$927.49	\$1,206.04	\$959.43	\$995.93	\$991.09	\$1,055.15	\$1,394.70
	Rank	(49)	(29)	(26)	(14)	(31)	(20)	(46)	(38)	(42)	(38)	(19)
Lakeside, Tarpon Springs	\$	-	\$1,665.75	\$1,653.33	\$2,084.89	\$2,141.70	-	\$2,405.92				
	Rank		(2)	(3)	(1)	(1)		(1)				
Lakeview, St Petersburg	\$	\$1,274.42	\$1,274.39	\$1,654.66	\$1,119.46	\$1,662.20	\$1,041.88	\$1,401.99	\$1,544.12	\$999.85	-	-
	Rank	(6)	(10)	(2)	(27)	(5)	(36)	(14)	(10)	(40)		
Maximo, St Petersburg	\$	-	-	-	\$738.17	-	\$840.32	\$915.45	\$853.36	\$891.76	-	\$1,448.48
	Rank				(57)		(52)	(51)	(53)	(50)		(16)
McLeod Memorial, Bartow	\$	-	-	\$916.38	\$980.15	\$764.16	-	\$811.13	\$795.98	\$772.38	\$799.50	\$768.75
	Rank			(31)	(38)	(45)		(58)	(60)	(59)	(58)	(59)
North Lakeland, Lakeland	\$	\$653.77	\$642.81	\$747.12	\$879.57	\$741.13	\$704.01	\$658.18	\$725.81	\$771.32	\$1,100.03	\$1,003.61
	Rank	(48)	(51)	(51)	(43)	(47)	(64)	(67)	(64)	(60)	(33)	(41)
Northeast, St Petersburg	\$	\$1,242.72	\$1,584.31	\$1,511.20	\$1,567.08	\$1,685.12	\$1,491.04	\$1,487.24	\$1,618.13	\$1,465.88	\$1,492.96	\$1,435.06
	Rank	(8)	(4)	(4)	(5)	(4)	(6)	(12)	(6)	(10)	(8)	(17)
Northwest, St Petersburg	\$	\$1,242.74	-	-	-	-	\$1,483.98	\$1,568.47	\$1,540.76	\$1,368.51	\$1,287.28	\$1,196.68
	Rank	(7)					(7)	(8)	(11)	(14)	(20)	(30)
Northwood, Clearwater	\$	\$680.84	\$705.02	\$631.89	\$721.43	\$663.17	\$769.86	\$742.58	\$707.19	\$664.93	\$637.96	\$648.85
	Rank	(43)	(46)	(59)	(58)	(53)	(59)	(65)	(66)	(66)	(61)	(62)
Palm Harbor, Palm Harbor	\$	\$798.34	\$1,208.26	\$1,157.44	\$1,148.84	-	\$1,559.55	\$1,358.18	\$947.23	\$941.55	\$899.80	\$869.19
	Rank	(37)	(12)	(14)	(23)		(5)	(19)	(45)	(47)	(47)	(51)
Palma Ceia, Tampa	\$	\$588.91	\$579.36	-	-	\$681.60	\$727.13	\$713.13	\$676.96	\$678.82	\$873.18	\$703.37
	Rank	(55)	(59)			(52)	(62)	(66)	(67)	(65)	(51)	(60)
Parsons Memorial, Yankeetown	\$	\$988.77	\$1,273.14	\$948.53	\$1,107.95	-	\$943.00	\$929.32	\$1,034.69	\$1,165.81	\$1,241.97	\$1,288.69
	Rank	(18)	(11)	(29)	(28)		(43)	(48)	(31)	(26)	(22)	(28)
Pasadena, St Petersburg	\$	\$754.47	-	\$692.06	\$592.92	\$1,216.05	\$1,272.87	\$1,247.50	\$1,211.41	\$1,164.90	\$1,087.22	\$1,492.69
	Rank	(39)		(55)	(62)	(14)	(15)	(24)	(24)	(27)	(35)	(14)
PC in the Highlands, Lakeland	\$	\$1,301.14	-	-	\$1,430.54	\$1,328.79	\$1,225.78	\$1,406.01	\$1,546.75	\$1,598.03	\$1,531.89	\$1,465.67
	Rank	(4)			(9)	(11)	(19)	(13)	(9)	(4)	(6)	(15)
PC of Bloomingdale, Brandon	\$	\$1,308.31	\$1,369.14	\$1,337.05	\$1,489.94	\$1,927.48	\$1,678.60	\$1,896.75	\$2,153.61	\$2,402.25	\$2,438.77	\$2,182.53
	Rank	(3)	(7)	(6)	(6)	(2)	(4)	(5)	(2)	(1)	(1)	(4)

Note: Fields are blank when church did not exist that year; dash (-) indicate missing data, or "not reported."

Church, City		2002	2003	2004	2005	2006	2007	2008	2009	2010	2011	2012
Peace Memorial, Clearwater	\$	\$638.56	\$944.38	\$830.42	\$1,010.10	\$1,120.60	\$1,150.88	\$1,147.54	\$1,219.12	\$1,428.03	\$1,194.67	\$1,369.86
	Rank	(51)	(26)	(42)	(35)	(18)	(26)	(27)	(22)	(13)	(27)	(22)
Rio Vista, St Petersburg	\$	\$734.49	\$748.23	\$894.74	-	\$568.42	-					
	Rank	(41)	(41)	(34)		(56)						
Seffner, Seffner	\$	\$747.36	\$835.45	\$1,058.28	\$1,292.99	\$1,100.30	\$1,085.03	\$1,080.76	\$1,062.50	\$1,167.83	\$1,397.26	-
	Rank	(40)	(32)	(18)	(13)	(20)	(34)	(32)	(28)	(25)	(12)	
St Andrew, Sun City Cntr	\$	\$605.14	-	\$883.91	\$762.10	\$697.92	\$957.08	\$935.31	\$897.27	\$843.30	\$1,043.67	\$988.89
	Rank	(53)		(36)	(55)	(51)	(41)	(47)	(50)	(56)	(40)	(42)
St Andrew, Tampa	\$						\$1,322.72	\$1,383.82	\$1,418.85	\$1,497.77	\$1,413.42	\$1,711.38
	Rank						(14)	(15)	(14)	(7)	(11)	(8)
St Andrews, Dunedin	\$	\$1,051.25	\$858.82	\$785.71	\$984.12	\$970.78	\$645.47	\$979.42	\$1,022.88	\$922.93	\$646.27	-
	Rank	(16)	(30)	(47)	(37)	(27)	(68)	(43)	(34)	(49)	(60)	
St John, Tampa	\$	-	\$115.38	-	\$534.35	\$525.73	\$531.46	\$968.80	\$946.11	\$935.45	\$627.54	\$871.58
	Rank		(63)		(64)	(57)	(69)	(44)	(46)	(48)	(62)	(50)
St Marks, Hudson	\$	-	\$636.68	-	\$611.09	\$704.16	\$739.34	\$839.58	\$848.70	\$945.07	\$895.07	\$851.44
	Rank		(53)		(61)	(50)	(61)	(56)	(54)	(45)	(48)	(53)
Temple Terrace, Temple Terrace	\$	\$535.03	\$708.78	\$730.17	\$972.02	\$1,008.96	\$1,113.84	\$1,000.61	\$970.45	\$860.24	\$810.86	\$958.99
	Rank	(61)	(45)	(53)	(40)	(24)	(29)	(39)	(40)	(53)	(57)	(44)
Tims Memorial, Lutz	\$	\$816.55	\$760.16	\$897.59	\$1,041.51	\$1,104.83	\$1,248.38	\$1,234.66	\$998.16	\$1,088.68	\$1,186.67	\$1,318.46
	Rank	(35)	(40)	(33)	(34)	(19)	(17)	(25)	(37)	(34)	(30)	(26)
Trinity PC Seven Springs, New Port Richey	\$	\$667.87	\$741.39	\$698.42	\$909.84	\$1,012.28	\$1,136.77	\$1,060.23	\$948.43	\$1,065.94	\$1,066.83	\$983.10
	Rank	(45)	(43)	(54)	(42)	(23)	(27)	(34)	(44)	(35)	(36)	(43)
Trinity, Clearwater	\$	\$1,291.05	\$1,383.57	\$1,220.97	\$1,188.51	\$1,340.11	\$1,249.31	\$1,557.11	\$1,562.32	\$1,754.56	\$1,863.42	\$1,811.68
	Rank	(5)	(6)	(11)	(19)	(10)	(16)	(9)	(8)	(3)	(3)	(7)
Trinity, St Petersburg	\$	\$662.66	\$719.42	\$877.37	-	-	\$785.32	\$609.88	-	-	\$487.40	\$8.45
	Rank	(46)	(44)	(37)			(58)	(68)			(63)	(64)
Village, Tampa	\$	\$1,158.58	\$1,121.23	\$887.12	\$1,086.00	\$1,209.80	\$1,183.51	\$1,299.42	\$1,144.76	\$1,305.35	\$1,481.34	\$1,331.98
	Rank	(11)	(16)	(35)	(30)	(15)	(23)	(21)	(27)	(17)	(9)	(25)
Westminster, Lakeland	\$	\$1,085.99	-	\$1,086.22	\$1,290.93	\$1,304.80	\$1,459.91	\$1,095.24	\$1,516.05	\$1,202.53	\$1,054.95	\$1,138.08
	Rank	(14)		(16)	(15)	(12)	(8)	(30)	(12)	(22)	(39)	(36)

Note: Fields are blank when church did not exist that year; dash (-) indicate missing data, or "not reported."

<b>Church, City</b>		<b>2002</b>	<b>2003</b>	<b>2004</b>	<b>2005</b>	<b>2006</b>	<b>2007</b>	<b>2008</b>	<b>2009</b>	<b>2010</b>	<b>2011</b>	<b>2012</b>
Westminster, New Pt Richey	\$	\$509.74	\$597.10	\$790.00	-	\$727.43	\$1,031.10	\$787.50	\$1,177.94	\$1,140.00	\$1,239.13	\$1,159.05
	Rank	(62)	(56)	(46)		(48)	(37)	(60)	(25)	(30)	(23)	(33)
Westminster, St Petersburg	\$	\$346.00	\$401.45	\$914.88	\$581.91	\$762.67	-	\$458.16	\$595.23	\$552.10	\$455.34	\$246.39
	Rank	(63)	(61)	(32)	(63)	(46)		(70)	(68)	(67)	(64)	(63)
Woodlawn, St Petersburg	\$	\$1,015.02	\$1,120.54	\$1,253.59	\$1,425.12	-	\$1,089.55	\$1,054.69	\$1,061.95	\$1,463.83	-	-
	Rank	(17)	(17)	(8)	(10)		(32)	(36)	(29)	(11)		

Note: Fields are blank when church did not exist that year; dash (-) indicate missing data, or "not reported."

**Tampa Bay Presbytery - Table 12**  
**Congregations by Year Organized, 2002 - 2012**

	<b>2002</b>	<b>2003</b>	<b>2004</b>	<b>2005</b>	<b>2006</b>	<b>2007</b>	<b>2008</b>	<b>2009</b>	<b>2010</b>	<b>2011</b>	<b>2012</b>
Number of Congregations	77	76	76	75	76	76	76	75	73	72	72
Number Year Organized Unknown	1	1	1	1	1	1	2	2	1	1	1
% Number Year Organized Unknown	1.3%	1.3%	1.3%	1.3%	1.3%	1.3%	2.6%	2.7%	1.4%	1.4%	1.4%
Number Organized 5 Years or Less	1	0	0	0	1	1	1	1	1	1	0
% Organized 5 Years or Less	1.3%	0.0%	0.0%	0.0%	1.3%	1.3%	1.3%	1.3%	1.4%	1.4%	0.0%
Number Organized 6 - 10 Years	2	3	2	2	2	1	0	0	0	0	1
% Organized 6 - 10 Years	2.6%	3.9%	2.6%	2.7%	2.6%	1.3%	0.0%	0.0%	0.0%	0.0%	1.4%
Number Organized 11 - 20 Years	12	4	5	5	4	4	5	4	3	3	2
% Organized 11 - 20 Years	15.6%	5.3%	6.6%	6.7%	5.3%	5.3%	6.6%	5.3%	4.1%	4.2%	2.8%
Number Organized 21 - 40 Years	16	22	20	18	19	19	17	16	16	16	17
% Organized 21 - 40 Years	20.8%	28.9%	26.3%	24.0%	25.0%	25.0%	22.4%	21.3%	21.9%	22.2%	23.6%
Number Organized 41 Years or More	45	46	48	49	49	50	51	52	52	51	51
% Organized 41 Years or More	58.4%	60.5%	63.2%	65.3%	64.5%	65.8%	67.1%	69.3%	71.2%	70.8%	70.8%



**Tampa Bay Presbytery - Table 13**  
**Gains and Losses, Inactives, and Christian Education Enrollment, 2002 - 2012**

	<b>2002</b>	<b>2003</b>	<b>2004</b>	<b>2005</b>	<b>2006</b>	<b>2007</b>	<b>2008</b>	<b>2009</b>	<b>2010</b>	<b>2011</b>	<b>2012</b>
Prof. Faith Gains <=17 (N)	216	179	166	136	159	209	154	148	176	182	142
Prof. Faith Gains <=17 Per 100 Members	0.8	0.7	0.6	0.5	0.6	0.9	0.6	0.6	0.8	0.8	0.7
Prof. Faith Gains >=18 (N)	725	777	478	663	517	864	680	611	644	478	363
Prof. Faith Gains >=18 Per 100 Members	2.7	2.9	1.8	2.6	2.1	3.5	2.9	2.6	2.9	2.1	1.7
Total Prof. Faith Gains (N)	941	956	644	799	676	1,073	834	759	820	660	505
Total Prof. Faith Gains Per 100 Members	3.4	3.6	2.5	3.2	2.7	4.4	3.5	3.2	3.7	3.0	2.3
Certificate Gains (N)	592	597	653	685	485	577	425	298	406	284	197
Certificate Gains Per 100 Members	2.2	2.2	2.5	2.7	2.0	2.4	1.8	1.3	1.8	1.3	0.9
Other Gains (N)	201	55	317	274	125	86	101	66	167	244	164
Other Gains Per 100 Members	0.7	0.2	1.2	1.1	0.5	0.4	0.4	0.3	0.7	1.1	0.8
Total Gains (N)	1,734	1,608	1,614	1,758	1,286	1,736	1,360	1,123	1,393	1,188	866
Total Gains Per 100 Members	6.3	6.0	6.2	6.9	5.2	7.1	5.7	4.8	6.2	5.3	4.0
Certificate Losses (N)	363	330	335	436	265	452	287	212	248	201	187
Certificate Losses Per 100 Members	1.3	1.2	1.3	1.7	1.1	1.9	1.2	0.9	1.1	0.9	0.9
Deaths (N)	228	492	574	546	418	516	521	488	433	451	419
Deaths Per 100 Members	0.8	1.8	2.2	2.2	1.7	2.1	2.2	2.1	1.9	2.0	1.9
Other Losses (N)	1,301	1,462	1,504	1,221	1,085	1,376	931	1,031	830	1,257	1,097
Other Losses Per 100 Members	4.8	5.5	5.8	4.8	4.4	5.7	3.9	4.4	3.7	5.6	5.1
Total Losses (N)	1,892	2,284	2,413	2,203	1,768	2,344	1,739	1,731	1,511	1,909	1,703

	2002	2003	2004	2005	2006	2007	2008	2009	2010	2011	2012
Total Losses Per 100 Members	6.9	8.5	9.2	8.7	7.1	9.6	7.3	7.4	6.7	8.6	7.9
Infant/Children Baptisms (N)	296	361	260	239	186	279	259	216	235	174	209
Infant/Children Baptisms Per 100 Members	1.1	1.3	1.0	0.9	0.7	1.1	1.1	0.9	1.0	0.8	1.0
Adult Baptisms (N)	50	179	82	73	35	55	79	50	90	155	50
Adult Baptisms Per 100 Members	0.2	0.7	0.3	0.3	0.1	0.2	0.3	0.2	0.4	0.7	0.2
Christian Education Enrollment	8,691	8,386	8,853	9,887	9,085	10,956	9,620	8,701	8,183	7,602	8,336
Christian Education Enrollment as % of Membership	37.2%	38.6%	41.5%	42.3%	47.2%	49.6%	44.7%	40.8%	41.2%	40.5%	43.1%
Inactives	4,466	4,388	4,366	4,176	3,623	4,121	3,856	3,423	3,368	0	0
Baptized Members	3,529	2,707	2,784	2,556	2,756	2,781	2,522	2,939	2,949	1,723	1,451
Adherents	34,804	33,207	32,463	31,553	30,718	30,633	29,635	28,813	28,626	23,282	22,173

## Tampa Bay Presbytery - Table 14

### Race/Ethnicity and Gender of Members, Ruling Elders, Deacons, and Teaching Elders, 2002 - 2012

Total Reported	2002	2003	2004	2005	2006	2007	2008	2009	2010	2011	2012
Members: % White, non-Hispanic	94.8%	95.4%	95.5%	91.6%	95.8%	92.9%	93.0%	92.9%	91.6%	91.4%	93.9%
Members: % African-American*	1.5%	1.2%	1.6%	1.4%	0.8%	1.7%	1.5%	1.7%	1.8%	2.1%	1.5%
Members: % Asian	0.3%	1.2%	0.6%	3.1%	0.6%	2.6%	2.7%	2.5%	3.0%	3.1%	1.1%
Members: % Hispanic	2.1%	2.0%	2.1%	3.2%	2.6%	2.4%	2.4%	2.7%	3.2%	3.2%	3.4%
Members: % Native American	0.1%	0.1%	0.1%	0.2%	0.1%	0.1%	0.0%	0.1%	0.2%	0.1%	0.0%
Members: % Middle Eastern	0.0%	0.0%	0.0%	0.0%	0.0%	0.0%	0.0%	0.0%	0.0%	0.0%	0.0%
Members: % Other	1.3%	0.1%	0.2%	0.5%	0.1%	0.3%	0.3%	0.1%	0.3%	0.2%	0.1%
Ruling Elders: % White, non-Hispanic	91.2%	94.1%	95.9%	95.0%	95.2%	93.0%	93.7%	94.2%	91.4%	89.0%	91.7%
Ruling Elders: % African-American*	3.3%	2.7%	2.5%	2.0%	1.2%	3.1%	4.4%	2.2%	1.9%	3.2%	3.9%
Ruling Elders: % Asian	0.4%	0.4%	0.4%	0.7%	1.3%	1.0%	0.3%	0.4%	2.5%	2.2%	1.7%
Ruling Elders: % Hispanic	1.9%	2.0%	1.1%	2.2%	2.3%	2.9%	0.9%	3.0%	4.0%	5.0%	2.3%
Ruling Elders: % Native American	0.2%	0.4%	0.0%	0.0%	0.0%	0.0%	0.1%	0.0%	0.1%	0.3%	0.0%
Ruling Elders: % Middle Eastern	0.0%	0.0%	0.0%	0.0%	0.0%	0.0%	0.0%	0.0%	0.0%	0.0%	0.0%
Ruling Elders: % Other	2.9%	0.5%	0.1%	0.0%	0.0%	0.0%	0.5%	0.1%	0.1%	0.3%	0.4%
Deacons: % White, non-Hispanic	92.2%	94.4%	93.7%	99.0%	96.0%	86.7%	91.7%	94.1%	70.6%	69.3%	75.2%
Deacons: % African-American*	2.8%	2.8%	3.5%	0.7%	0.7%	3.7%	7.4%	2.1%	2.2%	1.6%	3.4%
Deacons: % Asians	0.0%	0.0%	0.0%	0.0%	2.2%	5.8%	0.5%	0.3%	24.1%	26.2%	17.7%
Deacons: % Hispanic	1.9%	2.1%	2.5%	0.3%	1.1%	0.7%	0.2%	3.4%	3.1%	2.9%	3.7%
Deacons: % Native American	0.3%	0.3%	0.0%	0.0%	0.0%	0.0%	0.0%	0.0%	0.0%	0.0%	0.0%
Deacons: % Middle Eastern	0.0%	0.0%	0.0%	0.0%	0.0%	0.0%	0.0%	0.0%	0.0%	0.0%	0.0%
Deacons: % Other	2.8%	0.3%	0.3%	0.0%	0.0%	3.1%	0.2%	0.0%	0.0%	0.0%	0.0%
Teaching Elders: % White, non-Hispan	97.5%	97.4%	97.2%	96.6%	95.5%	95.4%	93.9%	93.2%	92.8%	92.5%	92.9%
Teaching Elders: % African-American	0.6%	0.7%	1.4%	1.7%	1.9%	2.0%	2.0%	1.4%	1.3%	1.4%	1.4%
Teaching Elders: % Asian	0.6%	0.7%	0.7%	1.1%	1.3%	1.3%	2.0%	2.7%	2.6%	2.7%	2.1%
Teaching Elders: % Hispanic	1.3%	1.3%	0.7%	0.6%	1.3%	1.3%	2.0%	2.7%	3.3%	3.4%	3.5%
Teaching Elders: % Native American	0.0%	0.0%	0.0%	0.0%	0.0%	0.0%	0.0%	0.0%	0.0%	0.0%	0.0%
Teaching Elders: % Other	0.0%	0.0%	0.0%	0.0%	0.0%	0.0%	0.0%	0.0%	0.0%	0.0%	0.0%
Members: % Female	59.4%	60.1%	60.2%	60.6%	60.0%	55.6%	55.0%	58.6%	59.8%	59.2%	62.2%
Members: % Male	40.6%	39.9%	39.8%	39.4%	40.0%	44.4%	45.0%	41.4%	40.2%	40.8%	37.8%
Ruling Elders: % Female	51.5%	51.1%	50.3%	47.8%	48.1%	49.1%	48.1%	50.8%	49.4%	51.2%	49.1%
Ruling Elders: % Male	48.5%	48.9%	49.7%	52.2%	51.9%	50.9%	51.9%	49.2%	50.6%	48.8%	50.9%
Deacons: % Female	63.3%	68.6%	66.2%	65.4%	66.6%	70.8%	73.4%	71.3%	70.1%	71.3%	71.0%
Deacons: % Male	36.7%	31.4%	33.8%	34.6%	33.4%	29.2%	26.6%	28.7%	29.9%	28.7%	29.0%
Teaching Elders: % Female	11.5%	11.9%	11.9%	12.2%	13.2%	14.6%	14.7%	15.8%	16.8%	20.2%	22.0%
Teaching Elders: % Male	88.5%	88.1%	88.1%	87.8%	86.8%	85.4%	85.3%	84.2%	83.2%	79.8%	78.0%

**Tampa Bay Presbytery - Table 15**  
**Growth in Average Worship Attendance, 2002 - 2012**

<b>Congregations with:</b>	<b>2002</b>	<b>2003</b>	<b>2004</b>	<b>2005</b>	<b>2006</b>	<b>2007</b>	<b>2008</b>	<b>2009</b>	<b>2010</b>	<b>2011</b>	<b>2012</b>
Large Decline in Worship Attendance (More than 10% from Previous Year)	8	11	6	13	10	14	11	11	16	16	20
Moderate Decline in Worship Attendance (6 - 10% from Previous Year)	5	6	8	10	8	9	5	5	11	12	8
Small Decline in Worship Attendance (1 - 5% from Previous Year)	12	8	9	6	8	6	9	11	11	7	10
Stable Worship Attendance (Zero % Change from Previous Year)	12	10	9	3	7	7	11	15	15	12	7
Small Growth in Worship Attendance (1 - 5% from Previous Year)	9	7	5	14	6	8	13	10	6	4	5
Moderate Growth in Worship Attendance (6 - 10% from Previous Year)	1	6	4	1	7	2	4	7	1	5	5
Large Growth in Worship Attendance (More than 10% from Previous Year)	7	5	9	9	5	6	15	7	6	3	4
Number of Reporting Congregations	54	53	50	56	51	52	68	66	66	59	59
Number of Congregations	77	76	76	75	76	76	76	75	73	72	72

## Tampa Bay Presbytery - Table 16

### Congregations Ranked by Growth and Decline in Membership and Worship Attendance, 2007 to 2012

		Membership 2007	Membership 2012	Net Membership Change	Percent Change	Worship 2007	Worship 2012	Net Worship Change	Percent Change
Bayshore, Tampa	Number Rank	87	89	2 (14)	2.30% (15)	55	45	-10 (18)	-18.18% (35)
Bel Mar, Tampa	Number Rank	69	63	-6 (18)	-8.70% (28)	45	33	-12 (19)	-26.67% (44)
Bethel	Number Rank				No report both years				No report both years
Chapel in the Grove, Lakeland	Number Rank	90	26	-64 (45)	-71.11% (70)	52	22	-30 (26)	-57.69% (61)
Chapel in the Pines, Tampa	Number Rank	79	57	-22 (29)	-27.85% (46)	40	35	-5 (16)	-12.50% (24)
Christ, Largo	Number Rank	337	181	-156 (57)	-46.29% (62)	222	139	-83 (42)	-37.39% (52)
Church of the Reconciler, Clearwater	Number Rank	54	36	-18 (26)	-33.33% (49)	31	0		No report both years
Church on the Bayou, Tarpon Springs	Number Rank	111	64	-47 (38)	-42.34% (55)	94	70	-24 (23)	-25.53% (43)
Faith, Dunedin	Number Rank				No report both years				No report both years
Faith, Seminole	Number Rank	782	699	-83 (50)	-10.61% (32)	443	410	-33 (28)	-7.45% (20)
First Hispanic, Tampa	Number Rank	61	68	7 (12)	11.48% (7)	40	110	70 (2)	175.00% (1)
First, Auburndale	Number Rank	152	140	-12 (23)	-7.89% (27)	104	107	3 (13)	2.88% (15)
First, Bartow	Number Rank	201	204	3 (13)	1.49% (16)	150	130	-20 (21)	-13.33% (27)

		Membership 2007	Membership 2012	Net Membership Change	Percent Change	Worship 2007	Worship 2012	Net Worship Change	Percent Change
First, Brandon	Number Rank	557	484	-73 (47)	-13.11% (35)	465	388	-77 (40)	-16.56% (32)
First, Brooksville	Number Rank	94	48	-46 (37)	-48.94% (65)	40	30	-10 (18)	-25.00% (41)
First, Crystal River	Number Rank	275	144	-131 (56)	-47.64% (63)	130	105	-25 (24)	-19.23% (36)
First, Dade City	Number Rank	170	158	-12 (23)	-7.06% (25)	129	94	-35 (29)	-27.13% (45)
First, Dunedin	Number Rank	413	432	19 (9)	4.60% (10)	204	175	-29 (25)	-14.22% (28)
First, Ft Meade	Number Rank	42	28	-14 (25)	-33.33% (49)	20	18	-2 (15)	-10.00% (23)
First, Haines City	Number Rank	994	562	-432 (62)	-43.46% (60)	905	548	-357 (48)	-39.45% (54)
First, Inverness	Number Rank	649	582	-67 (46)	-10.32% (31)	432	323	-109 (44)	-25.23% (42)
First, Lake Alfred	Number Rank	131	74	-57 (44)	-43.51% (61)	65	78	13 (9)	20.00% (5)
First, Lakeland	Number Rank	1,455	1,535	80 (5)	5.50% (8)	625	652	27 (6)	4.32% (13)
First, Plant City	Number Rank	175	156	-19 (27)	-10.86% (34)	120	80	-40 (31)	-33.33% (49)
First, Port Richey	Number Rank	120	69	-51 (42)	-42.50% (56)	95	55	-40 (31)	-42.11% (56)
First, Safety Harbor	Number Rank	106	31	-75 (48)	-70.75% (69)	94	29	-65 (38)	-69.15% (63)
First, St Petersburg	Number Rank	766	797	31 (6)	4.05% (11)	350	390	40 (4)	11.43% (10)
First, Tampa	Number Rank	379	515	136 (2)	35.88% (3)	475	316	-159 (45)	-33.47% (50)

		Membership 2007	Membership 2012	Net Membership Change	Percent Change	Worship 2007	Worship 2012	Net Worship Change	Percent Change
First, Winter Haven	Number Rank	1,003	1,028	25 (7)	2.49% (13)	353	308	-45 (34)	-12.75% (25)
First, Zephyrhills	Number Rank	146	108	-38 (36)	-26.03% (43)	184	145	-39 (30)	-21.20% (37)
Forest Hills, Tampa	Number Rank	375	351	-24 (31)	-6.40% (23)	210	175	-35 (29)	-16.67% (33)
Garden Crest, St Petersburg	Number Rank	115	111	-4 (16)	-3.48% (17)	60	0		No report both years
Good Samaritan, Pinellas Park	Number Rank	50	45	-5 (17)	-10.00% (30)	31	37	6 (12)	19.35% (6)
Grace, Spring Hill	Number Rank	714	684	-30 (34)	-4.20% (19)	0	375		No report both years
Gulfport, Gulfport	Number Rank	35	23	-12 (23)	-34.29% (50)	25	0		No report both years
Highland, Clearwater	Number Rank	157	90	-67 (46)	-42.68% (58)	110	60	-50 (35)	-45.45% (58)
Hope, Clearwater	Number Rank	183	170	-13 (24)	-7.10% (26)	160	116	-44 (33)	-27.50% (46)
Hope, Winter Haven	Number Rank	530	473	-57 (44)	-10.75% (33)	332	360	28 (5)	8.43% (12)
Hyde Park, Tampa	Number Rank	568	331	-237 (61)	-41.73% (54)	225	185	-40 (31)	-17.78% (34)
John Calvin, Tampa	Number Rank				No report both years				No report both years
Keystone, Odessa	Number Rank	67	13	-54 (43)	-80.60% (71)	40	15	-25 (24)	-62.50% (62)
Korean, Pinellas Park	Number Rank	138	131	-7 (19)	-5.07% (21)	137	80	-57 (37)	-41.61% (55)
Korean, Tampa	Number Rank	370	270	-100 (52)	-27.03% (45)	350	0		No report both years

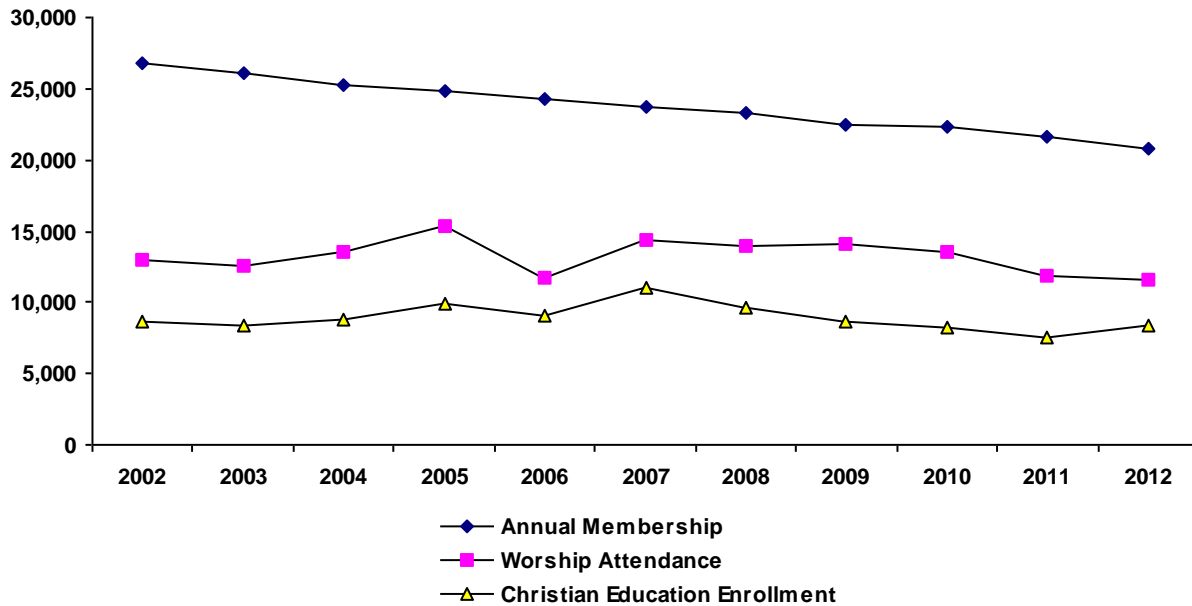
		Membership 2007	Membership 2012	Net Membership Change	Percent Change	Worship 2007	Worship 2012	Net Worship Change	Percent Change
Lake Hamilton, Lake Hamilton	Number Rank	39	40	1 (15)	2.56% (12)	33	33	0 (14)	0.00% (16)
Lake Seminole, Seminole	Number Rank	138	115	-23 (30)	-16.67% (36)	139	100	-39 (30)	-28.06% (47)
Lakeside, Tarpon Springs	Number Rank				No report both years				No report both years
Lakeview, St Petersburg	Number Rank	102	53	-49 (40)	-48.04% (64)	66	35	-31 (27)	-46.97% (59)
Maximo, St Petersburg	Number Rank	330	165	-165 (58)	-50.00% (66)	200	130	-70 (39)	-35.00% (51)
McLeod Memorial, Bartow	Number Rank	87	104	17 (10)	19.54% (4)	45	72	27 (6)	60.00% (4)
North Lakeland, Lakeland	Number Rank	592	568	-24 (31)	-4.05% (18)	480	253	-227 (46)	-47.29% (60)
Northeast, St Petersburg	Number Rank	201	303	102 (4)	50.75% (2)	120	220	100 (1)	83.33% (3)
Northwest, St Petersburg	Number Rank	80	90	10 (11)	12.50% (6)	50	95	45 (3)	90.00% (2)
Northwood, Clearwater	Number Rank	982	1,006	24 (8)	2.44% (14)	530	600	70 (2)	13.21% (8)
Palm Harbor, Palm Harbor	Number Rank	248	374	126 (3)	50.81% (1)	202	225	23 (7)	11.39% (11)
Palma Ceia, Tampa	Number Rank	2,461	2,773	312 (1)	12.68% (5)	1,300	1,000	-300 (47)	-23.08% (40)
Parsons Memorial, Yankeetown	Number Rank	39	29	-10 (21)	-25.64% (41)	32	27	-5 (16)	-15.62% (30)
Pasadena, St Petersburg	Number Rank	351	153	-198 (60)	-56.41% (68)	234	130	-104 (43)	-44.44% (57)
PC in the Highlands, Lakeland	Number Rank	202	168	-34 (35)	-16.83% (37)	134	114	-20 (21)	-14.93% (29)



		Membership 2007	Membership 2012	Net Membership Change	Percent Change	Worship 2007	Worship 2012	Net Worship Change	Percent Change
PC of Bloomingdale, Brandon	Number Rank	102	75	-27 (32)	-26.47% (44)	84	65	-19 (20)	-22.62% (39)
Peace Memorial, Clearwater	Number Rank	347	221	-126 (55)	-36.31% (51)	159	149	-10 (18)	-6.29% (18)
Rio Vista, St Petersburg	Number Rank			No report both years				No report both years	
Seffner, Seffner	Number Rank	168	157	-11 (22)	-6.55% (24)	109	101	-8 (17)	-7.34% (19)
St Andrew, Sun City Cntr	Number Rank	603	432	-171 (59)	-28.36% (47)	375	345	-30 (26)	-8.00% (21)
St Andrew, Tampa	Number Rank	137	129	-8 (20)	-5.84% (22)	111	109	-2 (15)	-1.80% (17)
St Andrews, Dunedin	Number Rank	508	533	25 (7)	4.92% (9)	291	300	9 (10)	3.09% (14)
St John, Tampa	Number Rank	127	76	-51 (42)	-40.16% (52)	60	55	-5 (16)	-8.33% (22)
St Marks, Hudson	Number Rank	417	310	-107 (53)	-25.66% (42)	321	270	-51 (36)	-15.89% (31)
Temple Terrace, Temple Terrace	Number Rank	307	278	-29 (33)	-9.45% (29)	126	0	No report both years	
Tims Memorial, Lutz	Number Rank	339	229	-110 (54)	-32.45% (48)	255	175	-80 (41)	-31.37% (48)
Trinity PC Seven Springs, New Port Richey	Number Rank	445	426	-19 (27)	-4.27% (20)	326	284	-42 (32)	-12.88% (26)
Trinity, Clearwater	Number Rank	344	258	-86 (51)	-25.00% (40)	149	169	20 (8)	13.42% (7)
Trinity, St Petersburg	Number Rank	125	71	-54 (43)	-43.20% (59)	25	25	0 (14)	0.00% (16)
Village, Tampa	Number Rank	309	233	-76 (49)	-24.60% (39)	180	141	-39 (30)	-21.67% (38)

		Membership 2007	Membership 2012	Net Membership Change	Percent Change	Worship 2007	Worship 2012	Net Worship Change	Percent Change
Westminster, Lakeland	Number Rank	116	96	-20 (28)	-17.24% (38)	60	67	7 (11)	11.67% (9)
Westminster, New Pt Richey	Number Rank	90	40	-50 (41)	-55.56% (67)	55	34	-21 (22)	-38.18% (53)
Westminster, St Petersburg	Number Rank	118	70	-48 (39)	-40.68% (53)	0	28		No report both years
Woodlawn, St Petersburg	Number Rank	134	77	-57 (44)	-42.54% (57)	69	0		No report both years

**Figure 1**  
**Membership, Worship Attendance, and Christian Education Enrollment**  
 2002 - 2012  
 Tampa Bay Presbytery



The graph above shows the number of members, the total average worship attendance of congregations, and the number of persons enrolled in Christian education in congregations in your presbytery for the most recent 10 years.

**Membership:** The average Presbyterian Church has 89 members (the median in 2012). In 2012, 54% of all congregations had 100 or fewer members.

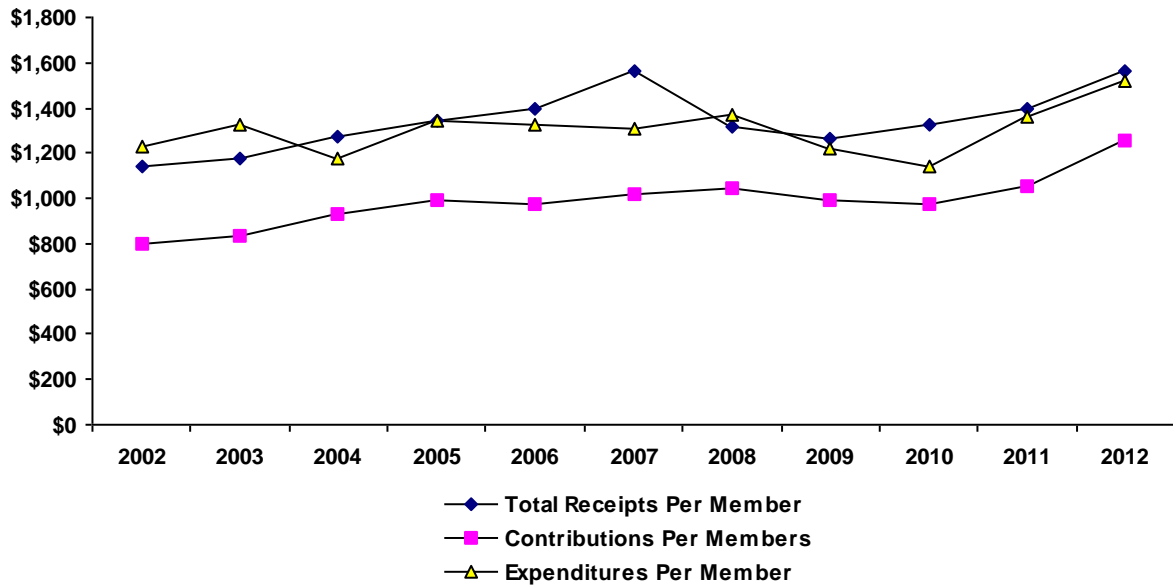
**Worship Attendance:** Average worship attendance was first reported in 1990. The average (median) worship attendance for all Presbyterian Church (U.S.A.) congregations is 60 persons.

**Christian Education Enrollment:** The total Christian education enrollment for all PCUSA congregations has been stable during the last 10 years. Most PCUSA congregations, regardless of size, report Christian education enrollment that is about half of their congregation's total membership.

**Key Questions:**

- \* How would you describe the membership, worship attendance, and Christian education enrollment trends in your presbytery?
- \* What is the relationship between these three trends for the most recent 10 years?
- \* What factors might explain church growth, stability or decline in these three areas?
- \* How can your presbytery provide resources and support for small membership churches?
- \* What actions might be taken to create more positive trends in the next 10 years?

**Figure 2**  
**Total Receipts, Contributions, and Expenditures Per Member**  
 2002 - 2012  
 Tampa Bay Presbytery



The graph above shows the total receipts, contributions, and expenditures per member in your presbytery for the most recent 10 years.

**Total Receipts:** In 2012, the PCUSA average total receipts per reporting member was \$1,738.84. The average total receipts per member will exceed average contributions per member because total receipts include "contributions from living donors" as well as bequests, investment income, and other non-contribution income.

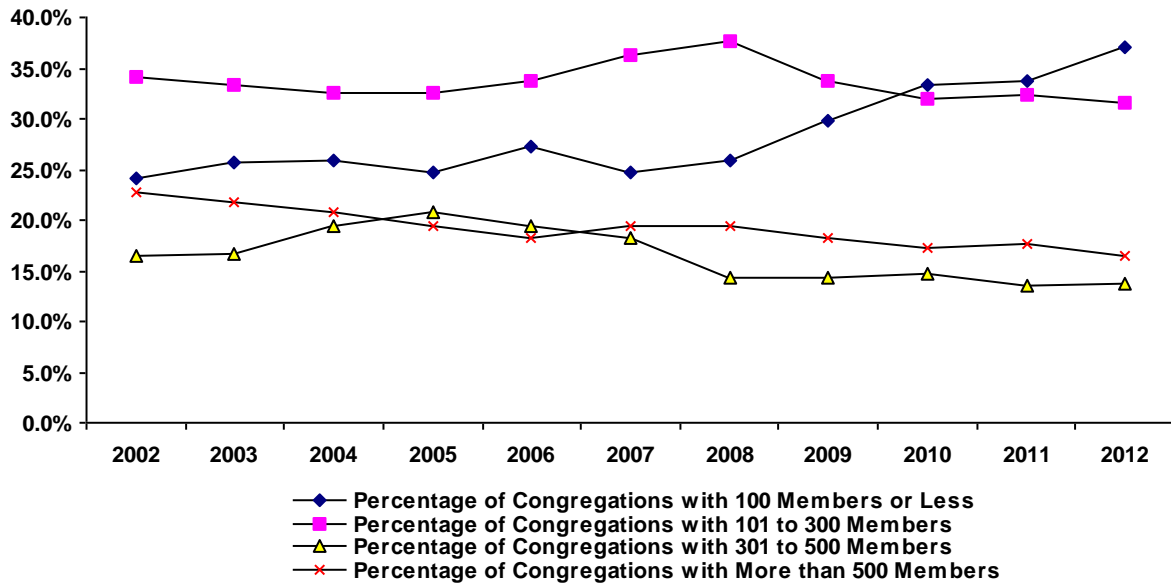
**Contributions:** Among all PCUSA reporting congregations the average contribution per member in 2012 was \$1,207.08.

**Expenditures:** The average PCUSA expenditure per reporting member in 2012 was \$1,603.82.

**Key Questions:**

- \* How would you describe the trends in receipts, contributions, and expenditures for the most recent 10 years?
- \* Have the three trends increased at about the same rate over the 10-year period?
- \* What factors explain these trends (e.g., membership loss or gain, stewardship programs)?
- \* How does your presbytery compare to the PCUSA average in receipts, contributions, and expenditures per member?

**Figure 3**  
**Percentages of Congregations in Size Categories**  
 2002 - 2012  
 Tampa Bay Presbytery

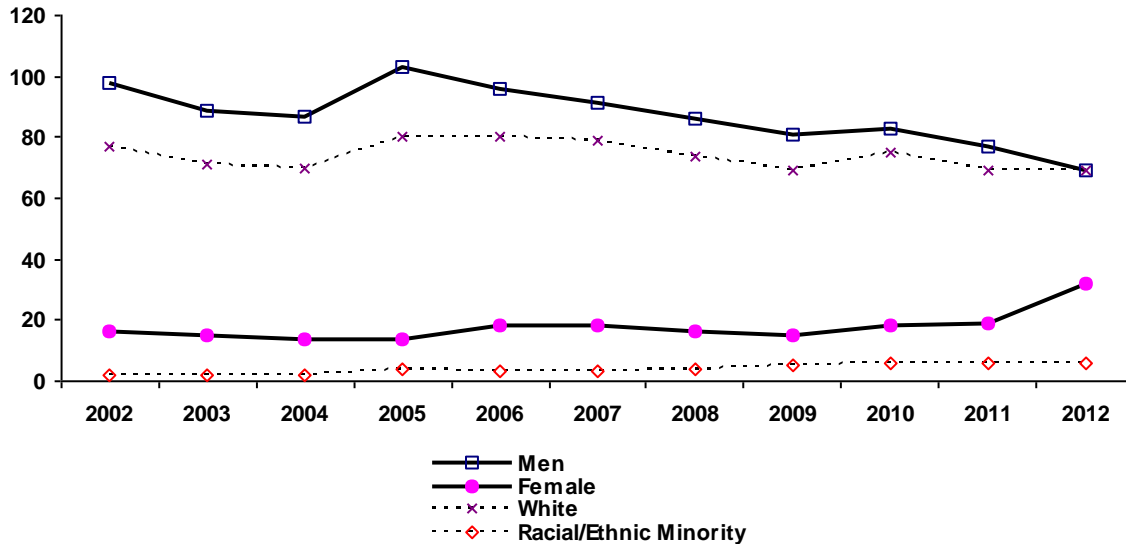


The graph above shows the distribution of congregations in your presbytery across four size categories: small congregations (100 members or less); mid-size congregations (101 to 300 members); large congregations (301 to 500 members); and very large congregations (more than 500 members). The largest group of congregations among all PCUSA congregations has 100 or fewer members (54%). Three in ten (31%) of PCUSA congregations are mid-size (101 to 300 members). Large congregations (301-500 members) comprise just 8% of the total. Almost the same number of churches are in the "very large" congregation category (501 members or more) --- 7%.

**Key Questions:**

- \* Which size category of congregation is most likely to be found in your presbytery?
- \* Has this changed in the most recent 10 years?
- \* What presbytery programs, resources, and support address the unique needs of congregations in each size category?
- \* Do presbytery priorities reflect the needs of small, mid-size, large, and very large congregations?

**Figure 4**  
**Number of Active Teaching Elders by Gender and Race/Ethnicity**  
 2002 - 2012  
 Tampa Bay Presbytery

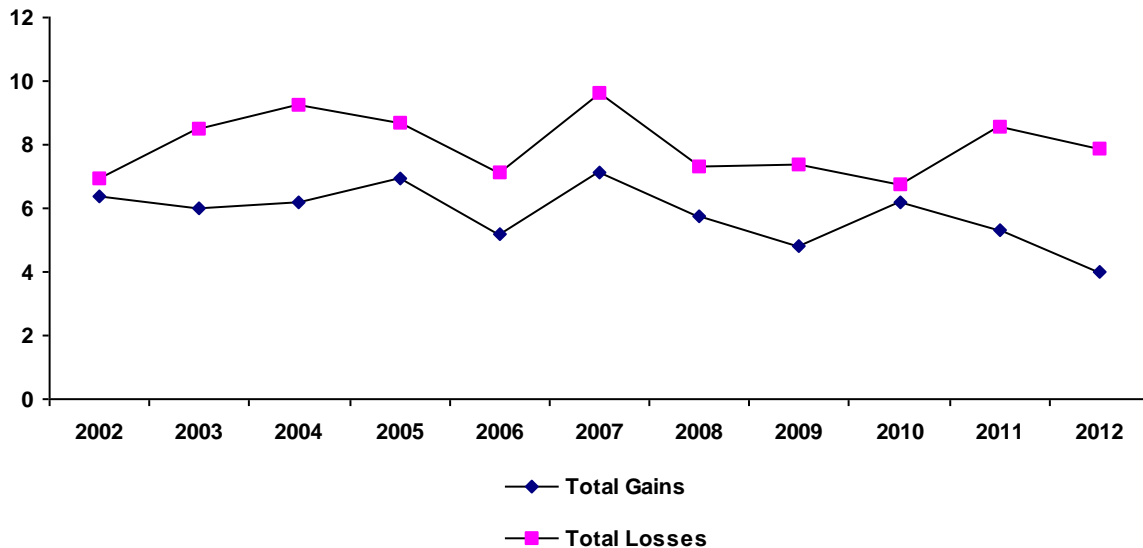


The graph above shows the number of active male teaching elders, active female teaching elders, active white teaching elders, and active racial/ethnic minority teaching elders in your presbytery for the most recent 10 years. Of all PCUSA active teaching elders, approximately 35 percent are female. PCUSA teaching elders are mostly white. In 2012, there were 1,496 active racial/ethnic teaching elders (12% of the total active), which is up from five years earlier, when there were 1,168 or 9% of the total.

**Key Questions:**

- \* How would you describe the supply and demand of pastoral leadership in your presbytery?
- \* Has the number of active teaching elders increased or decreased during the past 10 years?
- \* How does this number compare to the number of congregations in the presbytery?
- \* What is the ratio of female to male teaching elders in your presbytery?
- \* What steps has the presbytery taken to promote female leadership in parish ministry?
- \* What is the ratio of racial/ethnic minority teaching elders to white teaching elders in your presbytery?
- \* What steps has the presbytery taken to promote racial/ethnic minority leadership in parish ministry?

**Figure 5**  
**Total Gains and Total Losses Per 100 Members**  
 2002 - 2012  
 Tampa Bay Presbytery

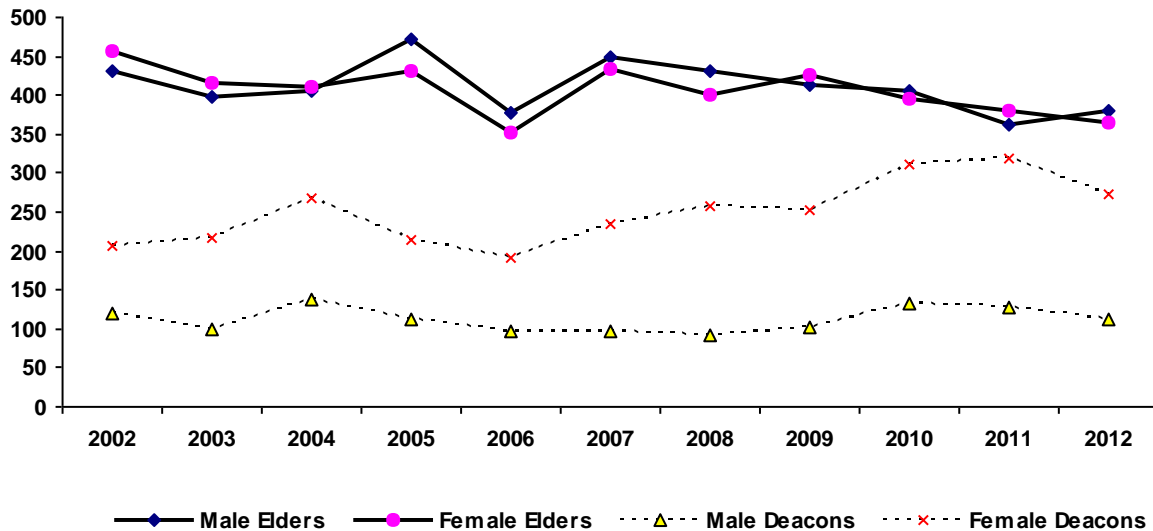


The graph above compares total gains per 100 members with total losses per 100 members in your presbytery for the most recent 10 years. Membership for the Presbyterian Church (U.S.A.) and its predecessor denominations (the UPCUSA and the PCUS) peaked in the early 1960s, then began a steady, slow decline. From 2002 to 2012, PCUSA membership has declined about 2.2% annually. Changes in membership result from the difference between new members added (membership gains) and current members subtracted (membership losses). The overall trend since 1990 has been one of declining gains. Since 1990, certificate and other losses have decreased more substantially than losses due to death. The total number of PCUSA members lost each year has been declining in the last 10 years, but the trend has not been sufficient to make up for the greater yearly decline in membership gains.

**Key Questions:**

- \* How would you describe the trend in total gains and total losses over the last 10 years in your presbytery? Do total gains exceed total losses? Or do total losses exceed total gains?
- \* What external factors (e.g., population loss in the presbytery) and internal factors (e.g., large loss of members by death related to the high age of members in PCUSA congregations) might explain these two trends over time?
- \* What steps can the presbytery take to increase the number of members and curb the number of losses (e.g., new church development)?

**Figure 6**  
**Number of Ruling Elders and Deacons by Gender**  
 2002 - 2012  
 Tampa Bay Presbytery



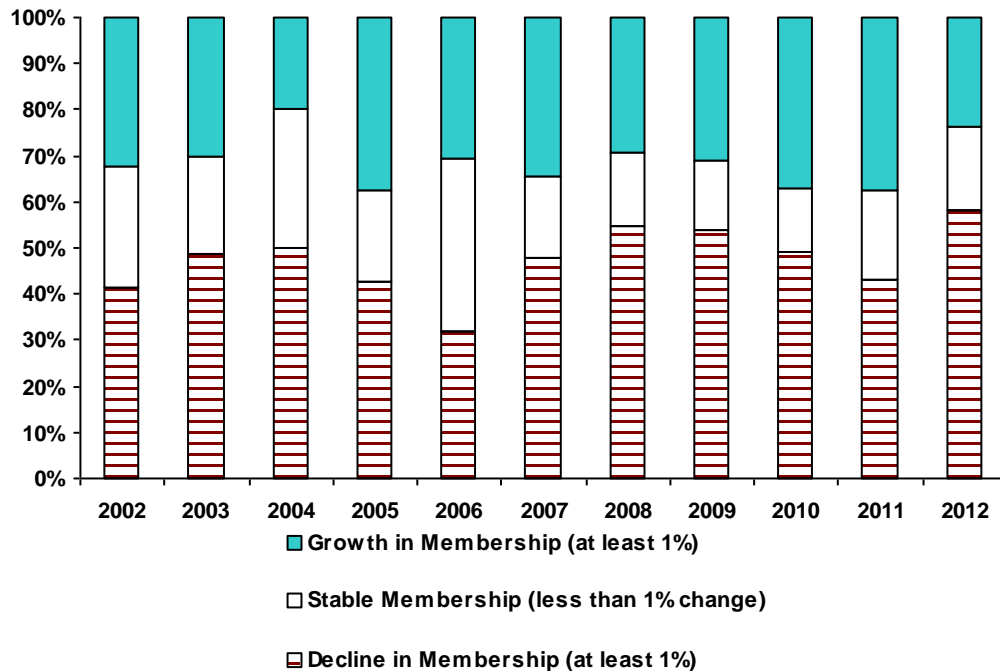
The graph above compares the number of ruling elders and deacons in your presbytery who are female or male. The majority of members in the PCUSA (58%) are female. While the majority of PCUSA deacons are female (72%), the percent of PCUSA ruling elders are nearly split among female and male (51% female; 49% male).

**Key Questions:**

- \* Has the number of persons serving as ruling elders and deacons changed in the last 10 years?
- \* Are these trends indicators of other significant changes in the presbytery?
- \* What steps can the presbytery take to provide training, resources, and support for ruling elders and deacons?
- \* What steps can the presbytery take to encourage male and female lay leadership in congregations?



**Figure 7**  
**Year-to-Year Church Membership Growth**  
 2002 - 2012  
 Tampa Bay Presbytery



The graph above shows a year-to-year picture of church membership in three change categories: congregations that grew in membership from the prior year by 1% or more, stable congregations that grew less than 1% or lost less than 1% of their membership, and congregations that declined in membership from the prior year by 1% or more.

About one-quarter of all PCUSA congregations (24%) grew 1% or more between 2011 and 2012. More than four in ten (47%) lost 1% or more of their membership in the past year. About three in ten congregations (29%) experienced no change in their membership.

**Key Questions:**

- \* How would you describe the majority of congregations in your presbytery -- growing, stable, or declining in membership?
- \* What are the significant factors in predicting membership growth or decline in the congregations in your presbytery?
- \* What steps can the presbytery take to assist congregations in their efforts to increase membership?