



Presbytery of Tampa Bay

455 Scotland St. Suite 1, Dunedin FL, 34698

August 16, 2018

If we say that we have fellowship with him while we are walking in darkness, we lie and do not do what is true; but if we walk in the light as he himself is in the light, we have fellowship with one another, and the blood of Jesus his Son cleanses us from all sin.

1 John 1:6-7

The Stated Meeting of the Presbytery of Tampa Bay will be on Thursday, August 23, 2018 at First Presbyterian Church of Brandon, 121 Carver Ave, Brandon, FL 33510. Find information about parking and the church campus on the next pages. Thanks to FPC Brandon for hosting us!

Registration will begin at 8:15 a.m. inside the entrance to Maudlin Hall (see map). Display tables and refreshments will be set up there, which is also where the latter portion of our meeting will take place. The meeting will begin promptly at 9:00am in the Sanctuary. First-time commissioners are invited to attend an online orientation on **Monday August 20th at 7:30pm** at this link:

<https://zoom.us/j/394434938>. More orientation materials can be found on pp. 8-12 of this packet.

You will find the presbytery meeting packet with this letter--directions to the church, a map of the facilities, the Docket, information for the Consent Agenda, Commission/Committee reports, orientation materials and other information. ***Please print copies and bring them to the meeting, or bring a device to view them.*** Below are some highlights planned for the meeting:

- The Coordinating Team will present a revised set of bylaws and a revised Manual of Operations to reflect the end of Regional Commission gatherings (p. 29 and Appendix)
- The Commission on Ministry (COM) will present Mike Loudon for honorable retirement
- Per Capita for next year will be approved, as will meeting locations for 2019 (p. 27)
- An Administrative Commission to help Northwest Presbyterian Church will be voted on (p. 28)

This Presbytery meeting we'll be doing networking groups again. This time the groups will be facilitated, but our goals remain the same: to talk with one another, get to know each other better, and to begin thinking about what might be helpful to each of these contexts and ministries. See pp. 6-7 for more info. Network groups are invited to eat together during lunch if desired.

The worship offering will go to Judeo Christian Health Clinic. For more info visit their website at judeochristianhealthclinic.org. **Checks for the offering should be made out to the Presbytery of Tampa Bay.**

For lunch we'll have boxes with a Ham or Turkey sandwich, chips and cookie. Vegetarian, Vegan and Gluten free meals will be available in limited quantities. Lunch tickets may be purchased for **\$9 each; checks for lunch tickets should be made out to First Presbyterian Church of Brandon.** Buy your tickets when you register, before the meeting is called to order, or during the first break.

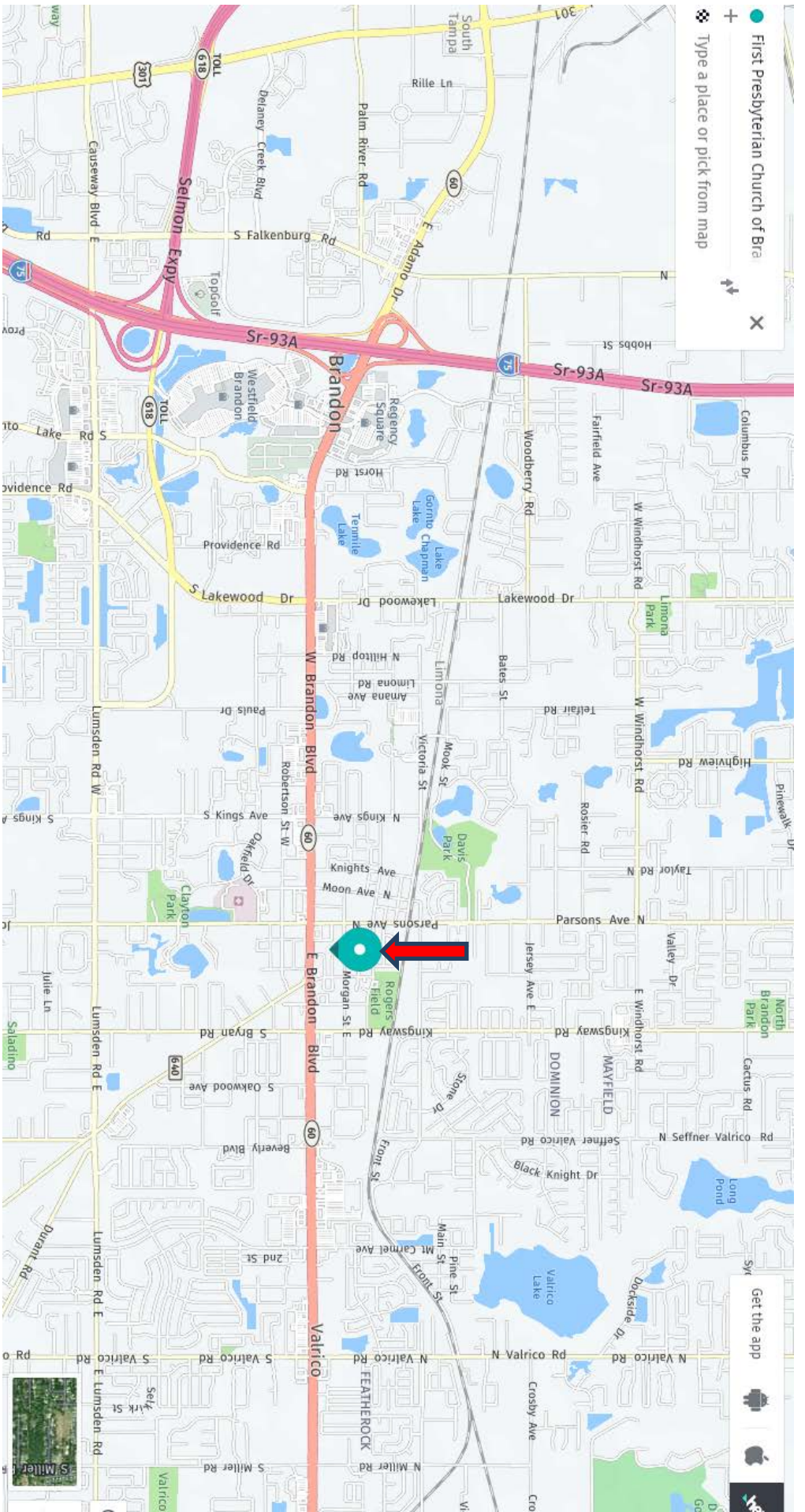
The peace of Christ be with you,

Libby

Libby Shannon,
Moderator

Dave

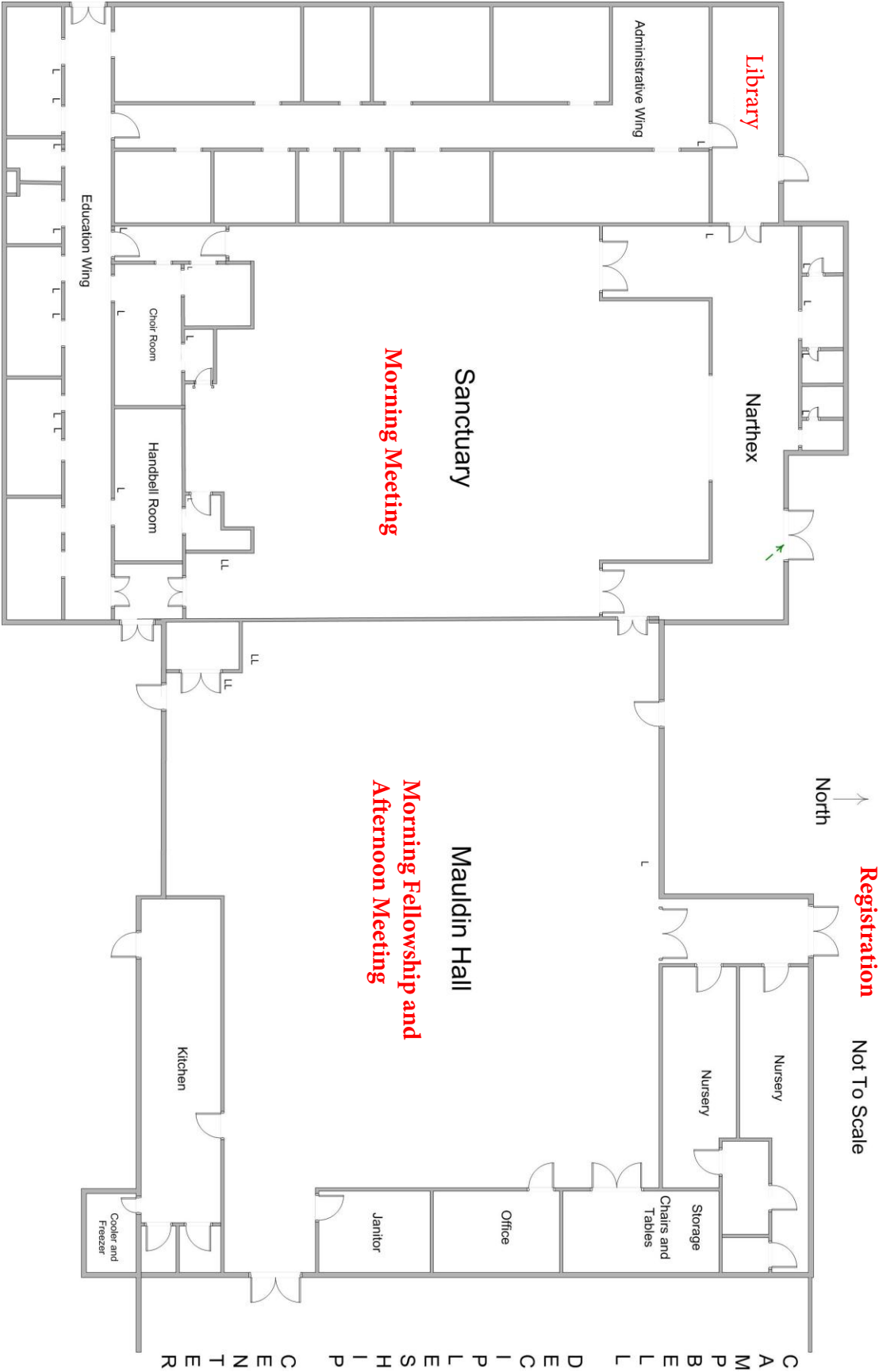
Dave Baker,
Stated Clerk and Director of Communications



First Presbyterian Church of Brandon
 121 Carver Avenue
 Brandon FL 33510
 Phone: 813 689-4597
 Website: fpcbrandon.org

From I-75 –Take Exit 257 (FL-60) 2.6 miles East, turn left on Parsons (Walgreens on NE corner) .1 mile, right on Fontaine travel .07 miles to the church.

From I-4 – Take Exit 10 (County Rd 579/County Hwy 579) Turn right if coming from Tampa; turn left if coming from Lakeland; travel South 1.9 miles, left on E. Dr. Martin Luther King, Jr., Blvd for 1 mile, right on S. Parsons Avenue for 2.9 miles. Turn left on Fontaine Street and travel .07 miles to the church.

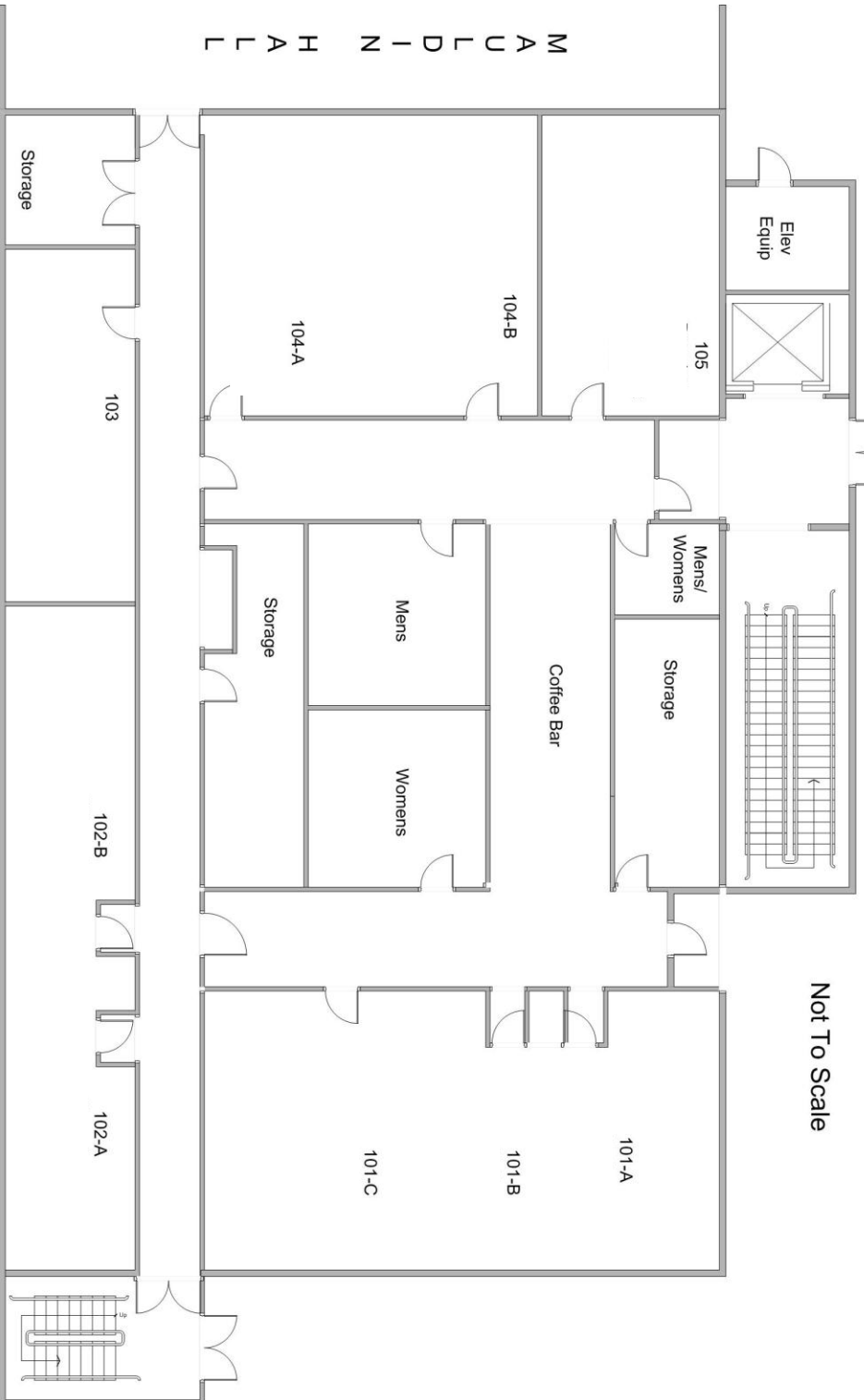


Network Groups

Campbell Discipleship Center Ground Floor



Not To Scale



Lunch Menu

The menu for the August 23 meeting is boxed lunches:

- Ham or Turkey Sandwich
- Chips
- Cookie

Lunch tickets will be \$9 each.

Reformed and always being reformed, right?

As we seek to address the need in our Presbytery for community and connection, the Network Groups are intended to be spaces where this can happen around similar interest. Below is the list of groups and a very general description of each. There is no commitment expected to a group nor are we looking for these groups to “do” or have an “end product” (As Presbyterians, we know this is hard to do). Our hope is that you will find fellowship, new ideas, and get to know your partners in ministry in your Presbytery. Please share and record your ideas for other possible groups and topics of interest with your facilitator or on your Presbytery Evaluation form. Thank you for your service, your ministry, and your participation!

1)New Members Presbytery

-For those who have been in the Presbytery for 2 years or less

2)“Youngish” TEs/REs and Social Media

-The church usually defines “Young Clergy” as under 40, but we’ll let you self-define.

3)HR Ministers

-For those who are honorably retired

4)Validated Ministries

-For those who serve validated ministries

5)Small Churches

-The church usually defines “small church” as under 120 members, but we’ll let you self-define.

6)Medium/Large Churches

-Medium/Large churches with several staff members.

7)Clerks of Session

-For clerks of session or those interested in being a clerk

8)Evangelism

-For those interested in sharing ideas/enriching/strengthening their evangelism ministry (since as Christians we should all be doing evangelism)

9)Mission

-For those interested in sharing ideas/enriching/strengthening their mission ministry (again, since as Christians we should all be doing mission)

10)Social Justice and Environmental Issues

-For those interested in sharing ideas/enriching/strengthening their efforts towards Social Justice and the Environment

11)Planning for the Autumn

-Share your curriculum, mission experiences, fellowship/fun activities for the fall

**NETWORKING GROUP
BREAKOUT ROOMS**

GROUP NAME	ROOM NAME
New Members Presbytery	Library
“Youngish” TEs/REs	103
HR Ministers	101a
Validated Ministries	101b
Small Churches	Fellowship Hall
Medium/Large Churches	102b
Clerks of Session	Sanctuary
Evangelism	101c
Mission/Environment	104a
Social Justice Issues	104b
Planning for Autumn	102a

First Time Commissioner Orientation Presbytery of Tampa Bay

If this is your first time as a Commissioner to any Presbytery meeting, please start here. If this is your first time at the Presbytery of Tampa Bay, but not your first rodeo, you may want to skip the first couple of sections.

Presbytery Meeting Basics

As a Presbyterian, you probably already know the basics of our system of government, so let me share a few tips you may not realize:

- You are a Commissioner, not a Delegate
 - This means that no one, not your session, not your pastor, not your spouse, can tell you how to vote on a particular issue. That's between you and the Holy Spirit.
- You may not know who all these people are and what their jobs are, so here's a cheat sheet.

Cast of Characters:

- Moderator
 - Rev. Libby Shannon, the person with the gavel. The Moderator is responsible to make sure the meeting runs well, and is the non-staff leader of the Presbytery.
- Vice Moderator
 - Rev. Loli Ros Reiter also moderates part of each Presbytery meeting, and is the Moderator in waiting.
- Presbytery Coach and Coordinator
 - Elder Patrice Hatley is our Presbytery's coach and executive. She's the staff numero uno and has a variety of responsibilities throughout the Presbytery, including acting as pastor to our clergy members.
- Stated Clerk
 - Rev. Dave Baker is the Presbytery's Stated Clerk and Director of Communications. As Stated Clerk he's responsible to help plan presbytery meetings, prepare the presbytery packet, and keep the meeting running "decently and in order", acting as the Presbytery's parliamentarian.
- Treasurer
 - Elder Terry Dennis is the guy who's going to explain the numbers to us. He's a volunteer officer of the Presbytery and responsible for the finances and budget of the Presbytery.

- You'll hear a lot of acronyms at a Presbytery meeting. Mostly these are our Committees and Commissions. Some translations:
 - COM (Commission on Ministry)
 - The Commission on Ministry is the primary body responsible for making decisions about relationships between pastors and churches, whether a particular pastor may become a member of the Presbytery, etc. It does its work primarily in regions. The COM is chaired by Rev. Laurie Palmer. East Region Chair is Ruling Elder Kris Marone, Central Region Chair is Rev. Nicole Abdnour, West Region Chair is Ruling Elder Michael Clark.
 - CPM (Commission on Preparation for Ministry)
 - The Commission on Preparation is the primary body responsible for those seeking to become ministers, also known as Inquirers and Candidates. Chaired by Rev. Deb Belusa.
 - CCV (Commission on Church Vitality)
 - They have all kinds of resources and money to give to churches, with some left over every year. The CCV is chaired by Rev. Micki Robinson. Get to know your regional chair: Rev. Joy Laughridge West, Paula Salter Central, and Evelyn McMullen East.
 - NRC (Nominating and Representation Committee)
 - Responsible for nominating Teaching and Ruling Elders to most committees and commissions. Be sure to share your gifts and talents with Chair Rev. Denise Lay!
 - Trustees (Board of Trustees)
 - The Trustees are a Commission of the Presbytery that handles the legal side of Presbytery business, implementing decisions of the main body, but also approving requests from churches for things like leasing their sanctuary, selling property, etc. Chaired by Ruling Elder John Hehn.
 - CT (Coordinating Team)
 - As the leadership group of the Presbytery, the Coordinating Team is a Commission made up of the chairs of each group above, as well as the Moderator and Vice-Moderator. The outgoing Moderator acts as the chair of the CT, while the Treasurer, Stated Clerk and Presbytery Coach and Coordinator all serve as ex officio members of the Team. Chaired by Rev. Mike Loudon.
- Presbyterian meetings are governed by Robert's Rules of Order
 - "No? Really?" you say. But yes, believe it or not, the Book of Order directs (G-3.0105) that Presbyterian councils (such as the Session or Presbytery or General Assembly) are governed by Robert's Rules of Order. That doesn't mean you have to be a parliamentary expert to attend meetings, but you should probably learn the basics below if you want the meeting to make sense once business begins.

Robert's Rules Cheat Sheet

Below is a summary of your rights and responsibilities under Robert's Rules. Generally speaking, these rules are intended to reduce tension, protect the rights and voice of the minority opinion, and of course, keep us doing things "decently and in order" (1 Cor. 14:40, ESV).

- Always address your comments to the Moderator or presenter, never to other commenters
- Generally, don't interrupt another speaker, but wait until you're recognized by the Moderator
 - EXCEPT for these reasons (not exhaustive):
 - You can't hear what's going on or you're so uncomfortable over the room temperature, etc. you can't stay in the meeting (say, "Point of Privilege" then explain the problem)
 - You think something was wrong with what just happened (say, "Point of Order" then state your objection. The chair will then decide if you're right or not.)
 - You want to request information from the speaker (say, "Point of Information" and ask your question. This is NOT an opportunity to give information, but only to request it.)
- Some motions it may be useful to know about:
 - Call the Question, aka, Move the Previous Question
 - A request to vote on whether or not to vote. This motion requires a second, but isn't debatable. It can only be made after the Moderator recognizes you. Typically it's made when someone thinks we've hit the limit of productive discussion, and we're running in circles.
 - When you hear "Call the Question", be aware that the next vote is *not* on whatever it is we're talking about, but on whether or not to continue discussion. An affirmative vote will end discussion, and the next vote is on the main motion.
 - To protect the rights of the minority opinion, this motion requires a 2/3rds majority to pass.
 - Amendments to Main Motions
 - If you want to slightly modify the language of a motion, to add, delete or replace some language, you'll want to say "I move to amend the motion..." when the Moderator recognizes you. This requires a second, and will then be discussed and voted on.
 - Substitute Motions
 - If you want to substantially modify a motion on the floor, changing the intent or most of the language, you need to use a Substitute Motion instead of amending the current motion. When the Moderator recognizes you, you'll say "I move the following substitute motion" and read your alternative suggestion. You'll also want to provide a copy to the Stated Clerk in writing.
 - Division of the House
 - If you think that a voice vote was too close to call, any member of the Presbytery may request a "Division of the House" or vote by raised hands or ballot.

- Order of the Day
 - Not a motion, but something you'll see on the agenda, usually related to lunch. All "Order of the Day" means is that we need to drop whatever it is we're doing when the time for that item arrives and start doing the "Order of the Day".
- Not necessarily in Robert's, but please follow these conventions of our Presbytery regardless:
 - **When you want to speak, please come to the microphone, then state your name, status (clergy or elder) and church.**
 - **Please return your nametag lanyard and evaluation to Ann Marie at the end of the meeting.**
 - Please read the Presbytery Packet thoroughly *before* the meeting.
 - Especially, read the items on the "Consent Agenda", as those motions will be passed right at the beginning of the meeting unless you speak up at that time.
 - You should also bring a copy of the Presbytery Packet with you, as there won't be any additional printed packets at the meeting. Digital copies are fine.
 - If you're *really* into polity, you may also want to consult the Presbytery's bylaws found on our website for more information about how our presbytery does business.

What makes the Presbytery of Tampa Bay different than other presbyteries?

If you're new to our presbytery, you may want to read the information above about our committee and commission structures. Several years ago our presbytery underwent a transformation process which is only recently being brought to completion. This resulted in a new mission statement, some common values, and a more relational, "bottom up" model of doing its work.

Our Mission Statement, to identify and strengthen leaders so that every congregation makes new and mature disciples for Jesus Christ, helps us to keep our focus on leadership development and outreach. Practically, this means that there is usually a component of training at Presbytery meetings, but also that there are intentional relational opportunities for us to get to know other leaders.

The core values we adopted during the transformation were to be relentlessly congregational, meaningfully connected, faithfully constitutional and unapologetically Christ-Centered. We want to focus on helping our congregations succeed, our Teaching and Ruling Elders to know and lean on one another, our processes and meetings distinctively Presbyterian, while focusing not on ourselves but on our Leader, Christ.

What, if anything, do I need to know about the August 23rd, 2018 meeting of Presbytery?

So what interesting tidbits should I be aware of for our upcoming meeting? The Packet is always a lot of reading, so here are the cliff notes, just to make sure you don't miss the more interesting bits:

- The Coordinating Team will present a revised set of bylaws and a revised Manual of Operations to reflect the end of Regional Commission gatherings
 - p. 29 and Appendix
- The Commission on Ministry (COM) will present Mike Loudon for honorable retirement
- Per Capita for next year will be approved, as will meeting locations for 2019
 - p. 27
- An Administrative Commission to help Northwest Presbyterian Church will be voted on
 - p. 28

Docket
Presbytery of Tampa Bay Stated Meeting
Thursday August 23, 2018
First Presbyterian Church of Brandon, Florida

- 8:15 a.m. Registration and Lunch Ticket Sales Begin (Entrance to Maudlin Hall)
- 9:00 a.m. Call to Order (Sanctuary) Moderator Libby Shannon
 Declaration of Quorum
 Approval of Docketed Agenda
 Greetings from Host Mike McCormack
 Introduction of First Time Commissioners and Corresponding Members
 Appointment of Tellers
- 9:10 a.m. Consent Agenda (summary on p. 14)
 Report of the Commission on Ministry (COM) (pp. 15-19)
 Report of the Commission on Preparation (CPM) (p. 20)
 Report of the Commission on Church Vitality (CCV) (pp. 21-22)
 Report of Synod Commissioners (pp. 23-24)
 Report of the Trustees (p. 25)
 Report of Beth-El Farmworker Ministry (pp. 37-38)
 Report of Cedarkirk Camp and Conference Center (p. 39)
 Report of FLAPDAN (pp. 40-41)
- 9:15 a.m. Worship
- 10:15 a.m. Mini-Break (Last chance to purchase lunch tickets)
- 10:30 a.m. Reports:
 Nominating and Representation (NRC) (p. 26) Denise Lay
 Report of the Commission on Ministry (COM) (pp. 15-19) Laurie Palmer
- 11:00 a.m. Networking Groups (See p. for details)
- 12:00 p.m. Lunch (Order of the Day – Maudlin Hall)
- 1:00 p.m. Plenary: (Maudlin Hall)
 Learning Journeys Panel Discussion
- 1:45 p.m. Reports (con't):
 Synod Executive and Stated Clerk Joyce Lieberman
 Board of Pensions Clark Simmons
 Report of Coordinating Team (CT) (p. 27-29) Mike Loudon
- 2:30 p.m. Reports of Staff, Officers and Partners
 Moderator Libby Shannon
 Vice Moderator (pp. 30-31) Loli Reiter
 Treasurer (pp. 32-36) Terry Dennis
 Coach and Coordinator Patrice Hatley
 Mission Partners (pp. 37-41) John Reiter, Tamara Leonard Lara and Walk Jones
 Stated Clerk (p. 42) David Baker
- 2:55 p.m. Unfinished Business and Thanks
- 3:00 p.m. Adjournment with Prayer Moderator Libby Shannon

**Consent Agenda Summary
Presbytery of Tampa Bay
August 23, 2018 Stated Meeting
(check full reports for all details)**

Reports without Motions:

**Report of the Commission on Ministry
Report of the Commission on Preparation for Ministry
Report of the Commission on Church Vitality
Report of Beth-El Farmworker Ministry
Report of Cedarkirk Camp and Conference Center
Report of Florida Presbyterian Disaster Assistance Network
Report of Commissioners to Synod
Report of Trustees**

Reports with Motions:

Coordinating Team:

1. That the Presbytery set its Stated Meetings for 2019 as follows:
Thursday February 21st, 2019 at First Presbyterian Church of St. Petersburg
Saturday May 4th, 2019 at Northwood Presbyterian Church of Clearwater
Thursday August 29th, 2019 at St. Andrew's Presbyterian Church of Sun City Center
Thursday November 9th, 2019 at First Presbyterian Church of Winter Haven

Stated Clerk:

1. That all requests for excused absences be granted for today's meeting.

REPORT TO THE PRESBYTERY OF TAMPA BAY**COMMISSION ON MINISTRY REPORT****Presbytery of Tampa Bay****For the August 23, 2018 Stated Meeting**

Motions for Presbytery – None

Actions of the Full Commission

Approved the addition of two policies to the Commission on Ministry Manual:
Recommendation for Waiver of Vacancy Dues and Abolishing A Called Pastor Position

Approved various other updates to the COM Manual. Updated manual can be viewed here:
<http://presbyteryoftampabay.com/Info/COM-Manual.pdf>

Information

Received a report from Clark Simmons, from the Board of Pensions. He explained the rollout of several new programs designed to better meet the needs of churches and pastors.

Actions of the West Region Team

Approved minutes of the January 3, 2018 meeting, (18.02.07); February 7, 2018 (18.03.07); March 7, 2018 (18.04.04); April 4, 2018 (18.05.10); May 10, 2018 (18.06.06); June 06, 2018 (18.07.11)

Approved the installation for the Rev John Scott to be the pastor of Christ Presbyterian Church, Largo, Florida on April 8, 2018 at 4:00 pm with the administrative commission to be presented at our March 2018 meeting. (18.02.07)

Approved abolishing the position of called pastor for Northwest Presbyterian Church, St Petersburg, Florida effective October 1, 2017 with the departure of their last pastor. (18.02.07)

Approved the recommendation to the Board of Pensions requesting the waiver of vacancy dues for Northwest Presbyterian Church, St Petersburg, Florida effective October 1, 2017 with the departure of its last pastor, the Rev Chip Tolleson.

Approved the transfer of the Rev Catherine Japhet from the Presbytery of Sheppards and Lapsley to the Presbytery of Tampa Bay.

Approved the validated ministry of the Rev Catherine Japhet as chaplain at Johns Hopkins All Children's Hospital (18.02.07)

Approved the Rev Lois Lehman HR to be the part time Stated supply pastor at 19 hours a week for Lakeview Presbyterian Church, St Petersburg, Florida from March 1, 2018 to August 31, 2018 (18.02.07)

Approved the following terms of call at Lakeview Presbyterian Church, St Petersburg, Florida for the Rev Lois Lehman HR on form F-1: Cash Salary: 22,000, Continuing Education \$1200.00; Auto/Professional \$1,600, Social Security \$1,683, Study Leave 2 weeks, Vacation 4 weeks plus one Sunday; for a total cost to the church of \$26,483. (18.02.07)

Approved the annual F-1 forms for Andrew Walton and Kathy Trautwein from Trinity Presbyterian Church, Clearwater, Florida, and Robert Scott and Dawn Haeger from Peace Presbyterian Church, Clearwater Florida, pending approval by the congregation on February 11, 2018. (18.02.07)

Approved the installation commission for the Rev John Scott to be the pastor of Christ Presbyterian Church, Largo, Florida, on April 8, 2018 at 4:00 p.m. They are: Moderator Libby Shannon, Ministers of Word and Sacrament: Kathy Dain and John DeBevoise Ruling Elders Betty Wajdowicz, Christ Presbyterian Church, Largo, Michael Clark, Church on the Bayou, Tarpon Springs and Silvia Rodriguez, Peace Memorial Presbyterian Church, Clearwater. (18.03.07)

Approved the annual F-1 forms for 2018 for Philip Hollins, Trinity Presbyterian Church of Seven Springs and Bruce Mulder, Palm Harbor Presbyterian Church.(18.03.07)

Approved the Rev. Lois Lehman HR to be the moderator for March 18, 2018 installation of elders and deacons at Trinity Presbyterian Church of St. Petersburg for this one time. (18.03.07)

Approved the revised installation commission for the Rev John Scott to be the pastor of Christ Presbyterian Church, Largo, Florida, on April 8, 2018 at 4:00 p.m. They are: Moderator Libby Shannon, Ministers of Word and Sacrament: Kathy Dain, John DeBevoise and Tamara Leonard Lara and Ruling Elders Betty Wajdowicz, Christ Presbyterian Church, Largo, Michael Clark, Church on the Bayou, Tarpon Springs and Silvia Rodriguez, Peace Memorial Presbyterian Church, Clearwater. (18.04.04)

Approved the Rev. John Harland HR to be the part time stated supply for Northwest Presbyterian Church for 18 hours a week beginning on May 1, 2018 pending the receipt of the F-1 form. (18.04.04)

Approved the Rev. Elizabeth Coleman to be placed on the pulpit supply list. (18.04.04)

Approved the receipt of the F-1 form for the Rev. John Underwood and the Woodlawn Presbyterian Church of St. Petersburg (18.04.04)

Approved the receipt of the F-1 forms for the Rev. Chris Curvin and the Rev. Paul Means and Northwood Presbyterian Church. (18.04.04)

Approved the receipt of the revised F-1 form of the Rev. Andrew Walton and the Trinity Presbyterian Church of Clearwater. (18.04.04)

Approved Revs. Bill and Jean Cooley as co-moderators for Trinity Presbyterian Church of St. Petersburg. (18.05.10)

Approved the F-1 for John Harland at Northwest Presbyterian Church of St. Petersburg. Terms of 10,800 per year based on 13 hours per week for three weeks a month beginning June 1, 2018. End date: August 31, 2018. (18.05.10)

Approved the Rev. John Underwood to continue as part time stated supply pastor effective January 1, 2018 to December 31, 2018 at Woodlawn Presbyterian Church with the following F-1 terms of call: Housing: \$23,500.00, Continuing Education: \$600, Auto/Professional: \$300, Social Security: \$1,797.75 , Study Leave: 3 weeks and Vacation: 6 weeks. The total annual cost to the church is \$26,197.75.(18.06.06)

Received the Rev. William Hull HR into membership from Peace River Presbytery. (18.06.06)

Approved the Rev. Lois Lehman to continue on as a part-time stated supply at Lakeview Presbyterian Church, St. Petersburg for an additional six months (September 1, 2018 – February 28, 2018) with the following annualized terms of call: Salary: \$22,000, Continuing Education: \$1,200, Auto/Professional: \$1,600, Social Security: \$1,653, two (2) weeks Study Leave and eight (8) weeks Vacation, for a total cost to the church of \$26,483 (18.07.11)

Approved the F-2 form to ratify the prior email vote for the ordination commission for Stephanie Dion on Sunday, July 22, 2018 at St. Andrews Presbyterian Church, Dunedin, at 3:00 p.m. The commission will be: Moderator: the Rev. Libby Shannon, Ministers of Word and Sacrament: the Revs. John Fullerton, Bob Scott and Deb Belusa and Elders Sue Moore (Trinity Presbyterian Church, Clearwater), Lois Dion (St. Andrew's Presbyterian Church, Clearwater) and Jim Gregory (Forest Hills Presbyterian Church, Tampa). (18.07.11)

Approved a motion to presbytery to appoint an administrative commission for Northwest Presbyterian Church, St. Petersburg at the request of the Session to work with and assist the Session in addressing issues facing the congregation. (18.07.11)

Actions of the Central Region Team

Approve Minutes of December 2017 CCOM meeting (18.02.01); January 2018 and February 2018 (18.04.05); June 28, 2018 (18.08.02)

Approved the examination, validated the position, for Kenny Hubbell at Palma Ceia Presbyterian Church and to appear before the Central Commission to preach and to be examined for ordination and installation. (18.02.08)

Approved the following Ordination date and Commission:
 Saturday, April 7th 4:00 p.m. at Palma Ceia Presbyterian Church.
 Moderator of the Presbytery: Rev. Elizabeth Shannon
 Ministers: David Shelor, Mike Peacock, John DeBevoise, Dave Baker
 Elders: Anne Heidt, Hank Belusa, John Wells, Lynn Pabst (18.03.01)

Approved that we receive Dr. Neddy Helenisse Astudillo, Director for Training and Latinoamerica of Greenfaith a multinational non-profit organization, as a member of the Presbytery of Tampa Bay, validate her ministry with Greenfaith, and add her to the pulpit supply list. (18.04.05)

Approved the Mission Information Form for Village Presbyterian Church. Motion passed. Ben will communicate our action to them with our request that they clarify their understanding of the use of the term “experienced counselor.” (18.05.10)

Approved that Kitti Ginn be presented for examination by the Presbytery for ordination at a later date. (18.08.02)

Approved formation of support team for Chapel in the Pines (CitP) comprised of one member from each of COM, CCV, the Presbytery Trustees, and the Session of CitP. (18.08.02)

Approved a motion to affirm the intent of St. John Presbyterian Church to explore a Joint Congregational Witness with a UCC congregation. (18.08.02)

Actions of the Eastern Region Team

Approved minutes of meeting December 5, 2017 (18.01.02); January 2, 2018 (18.02.06); February 6, 2018 (18.03.06); March 6, 2018 (18.04.10)

Approved the trained elders, Keith Damkjer, Sandra Ellington, Deborah Foley, Debra Herrington, Ann Marshall, Adam Norman, and Julie Stone, of First Presbyterian Church, Lakeland to extend the Lord’s Supper to the homebound of the congregation on the same day as the sacrament is shared in worship. (18.01.02)

Approved the First Presbyterian, Winter Haven MIF for Associate Pastor. (18.01.02)

Approved the McLeod Presbyterian MIF for Stated Supply Pastor with the recommendation that Jack Taylor be substituted for Dick Huggins as a reference. (18.01.02)

Approved having PIFs sent directly to McLeod. (18.01.02)

Ratified the e-mail vote to approve Charlie Perrine as moderator for the Congregational Meeting at McLeod on January 28, 2018. (18.02.06)

Approved the list of participants in Cheryl Duke's installation service on April 29, 2018 at FPC Dade City. (18.03.06)

Approved terms of call for Rev. Sarah Bishop following examination by Skype and approved as Associate Pastor at First Presbyterian Church of Winter Haven. The congregational vote is set for June 3. (18.05.09)

Examined and approved Mary McKey for transfer into Presbytery of Tampa Bay. (18.07.31)

Report of the Commission on Preparation for Ministry

To the Presbytery of Tampa Bay

August 23, 2018

Motions for Presbytery

None

Actions Taken by CPM

MOTION: That Eileen Jewell be moved to candidacy upon receipt of a letter of endorsement from her church's Session.

MOTION: That Jeff Davis receive the Synod scholarship of \$500.00.

Items for Information

Those under care of CPM as of August 16, 2018 are:

Candidates:

Kitti Ginn (St. Andrews, Dunedin – graduated from Dubuque)

Becky Bryan (Christ, Largo – graduated from Austin)

Andrew Rametta (Palma Ceia – graduated from Columbia) – CPM met with him on 6-21.

Will Wellman (Palma Ceia – graduated from Princeton) – CPM met with him on 6-21.

Jeff Davis (Trinity, Clearwater – at Dubuque)

Inquirers:

Ashley Parsons (Palma Ceia – at Dubuque)

Leah Higginbotham (First, Lakeland – at Asbury)

Eileen Jewell (Palma Ceia – graduated from McCormick) – CPM met with her on 6-21.

Malissa Garcia (PC of Palm Harbor – at Dubuque)

Becky Higman (First, St. Petersburg – at Dubuque)

Brian Morgan (First, Lakeland – at Asbury)

Others who have expressed interest in coming under care (aka “In the Wings”)

Rosalie Bradford (Peace Memorial, Clearwater)

Members of CPM:

East region – Kathy Vousden (regional chair), Paul Suich (CPM vice moderator), Jack Taylor, Jo Ahearn (2 vacancies)

Central region – Deb Belusa (CPM moderator), Karen Weber, Reg Dickey (regional chair), Jenny Sumner Carswell, Ann Whiteside, Celie Wilhite, Sally Speer

West region – Bob Scott (regional chair), Sue Moore (secretary), Carol White, Miguel Santamaria, George Meese, Bruce Mulder

**Commission on Church Vitality
Presbytery Report
August 23, 2018**

Items for Action:

None

For Information:

The commission is still in the process of developing ways of working within this presbytery to partner with congregations and worshiping communities to nurture leadership and our connections so that we might bear witness in our communities and in the world.

- We support our New Worshiping Communities.
 - In May, the commission voted to match the denomination's \$25,000 grant to Missio Dei. That denomination's money has been received.
 - New Hope Presbyterian (St. Petersburg) has also received \$25,000 from 1001 New Worshiping Communities
 - Nuevo Camino at Beth-El and Nueva Esperanza at Hope Presbyterian have received first level funding from 1001 New Worshiping Communities
- The commission has chartered a bus to transport people to the Synod Small Church Conference at St. Simon's Island in March, 2019. This is to further support and nurture a small church network.
- A "Sermons of Service" Facebook page was created – and the concept of "Sermons of Service" has been copied in other presbyteries
- The commission works with churches that have received building related loans through conversations with the trustees. CCV develops a process, in consultation with the congregation, whereby those loans *may* become grants. Several congregations have received such loans and are responding to the challenge to be forward looking in mission and ministry. Factors that will be considered include:
 - Financial Health:
 - We will ask that the congregation complete the financial assessment tool from the Presbyterian Foundation
 - An insurance review
 - A look at stewardship and financial practices
 - Church Vitality
 - What is the congregation's mission?
 - How is that mission evident in the congregation's life?
 - Is there a ministry plan?
 - What is the hope for the future?
- CCV has funds available that can be used for vitality and mission projects, particularly ones that take congregations in new directions. As these requests are made, some of the same questions about Financial Health and Church Vitality will be asked. A first

step, an application for Church Vitality Projects, can be found in the CCV section of the website. Currently, it says “West Region.”

- CCV strives to work with congregations directly as partners in ministry and discernment, seeking to encourage churches to bear witness where they are in ways that nurture mature disciples.

The 32nd STATED MEETING HIGHLIGHTS

SYNOD OF SOUTH ATLANTIC

SEVEN OAKS PRESBYTERIAN CHURCH

COLUMBIA, SOUTH CAROLINA

APRIL 19-20, 2018

EXECUTIVE ADMINISTRATIVE COMMISSION (EAC):

- **Moderator-Elect, Kathi Parchem** reported that Personnel reviews were conducted for Jodi Dodge, Treasurer (Volunteer); Lisa Lovelady, Administrator, and Josephine Mamangun, Bookkeeper. The EAC will review the Rev. Joyce Lieberman, Synod Executive, in June, 2018, after one year with the Synod.
- The *New Worshiping Communities Investment Policy* was removed from the Manual of Operations.
- The *Gainesville Campus Ministry* payouts will be calculated as the greater of \$81,000 or 4% of the Fund balance, as of June 30th of the prior year.

ADMINISTRATION AND RELATIONSHIPS COMMITTEE (ARC):

- **David Shelor, Chair** reported that the ARC approved the Synod covenants with *Agnes Scott College* and *Columbia Theological Seminary*; no changes were made to either.

BUDGET AND FINANCE COMMITTEE (BFC)/TREASURER:

- **Franklin Fant, Chair**, reported that the reserve withdrawal for 2018 is \$70,000 from the Synod's reserve fund; the corpus is not affected.
- The Rev. Jessi Higginbotham, BFC, *St. Augustine Presbytery*; the Rev. Katie Scott, COR, *Cherokee Presbytery*; the Rev. Frank Colladay, ARC, *Northeast Georgia Presbytery*, and the Rev. Dr. Jim Berger, MSC, *Peace River Presbytery*, will be the Synod's representatives for the Howard and Isabella Hawkins Trust Fund Committee.
- **Jodi Dodge, Treasurer** explained that the 2018 budget is based upon 80% of anticipated receipts, so the Synod must transfer reserves, however the Synod earns money on reserves.

MINISTRY SUPPORT COMMITTEE (MSC):

- **Andy Casto-Waters, Chair**, reported several changes for all grant applications: inclusion of a budget page, and with the final evaluation, an expense report and a return of any unused funds. The MSC awarded \$2,500 to the Atlanta Ministry to International Students (AMIS), *Greater Atlanta Presbytery*, and \$2,500 to First Presbyterian Church of Albany, Georgia, *Flint River Presbytery*.

COMMITTEE ON REPRESENTATION (COR):

- **Bob Capers, Chair**, noted the importance of commissioners and alternates from every Presbytery, and that COR members will be in contact.

RACIAL ETHNIC CONSULTANT REPORTS:

- **Joe Rigsby, African-American Consultant**, reported that they will have a pastor's retreat with the Rev. J. Herbert Nelson, GA Moderator. They are seeking bi-vocational leadership for their small churches.

- **Dong Yung Kim, Korean-American Consultant**, reported that they held many retreats this year. For many students, the Synod events are the highlight of the year for them.
- **Luis “Tony” Boada Davila, Hispanic-American Consultant**, reported that they make great use of Synod funds, supporting their pastors, and not wanting a lack of funds to be an issue. They are thankful for the Synod’s support.

SYNOD EXECUTIVE:

- **Joyce Lieberman, Synod Executive and Stated Clerk**, reported that the Synod’s most pressing concern is the changing cultural landscape and how it effects our membership. She asked committees to consider the question, and give feedback to the Stated Meeting: *In light of the responsibilities your committee, in particular, and the Synod as a whole, how can the Synod best support the ministries and mission of our presbyteries as they seek to support the witness of congregations?*

SYNOD STATED MEETING:

- The upcoming Stated Meeting dates are **May 2-3, 2019**, noon to noon, in the Atlanta, Georgia area.

Report of the Board of Trustees of the Tampa Bay Presbytery
To the Presbytery of Tampa Bay
August 23, 2018

Motions for Presbytery

1. None

Actions Taken

1. Accepted the resignation of Barbara Booth-Jarmon as a Trustee & Secretary of the Corporation. ⁶⁻²⁷⁻²⁰¹⁸
2. Elected Jim Gregory to be Secretary of the Corporation. ⁶⁻²⁷⁻²⁰¹⁸
3. Approved a \$22,978 loan to Northwest Presbyterian Church. ⁶⁻²⁷⁻²⁰¹⁷⁸

Items for Information

None.

**Report of the Committee on Nominations and Representation
To the Presbytery of Tampa Bay
August 23, 2018**

The Committee on Nominations and Representation nominates the following persons for election to the positions indicated. As much as possible, the Committee worked hard to address the need for parity among the members of the Committees/Commissions of the Presbytery to reflect a balance of Elders and Clergy, in addition to reflecting the gifts and skills necessary for ministry, and to be mindful to address the diversity of the Presbytery. Also, it can be noted that the Committee on Nominations and Representation has given attention to representation for and from the regions of the Presbytery. Nominations from the floor are in order, but require the prior agreement of the persons who are being nominated. Please note that certain terms apply and are noted: for example 2020-1 means class of 2020 serving first term. Please also note the following abbreviation key:

Ordination status:

- C for clergy who identify themselves ordained as ministers of word and sacrament
- E for those persons who are ordained as elders

Gender:

- M for Male identity and F for Female identity

Other Categories:

- W for people who identify as Caucasian
- H for people who identify as Hispanic or Latin
- B for people who identify as African American or Black
- A for people who identify as Asian or with their country/language of heritage

COMMISSION ON PREPARATION FOR MINISTRY (CPM)

Fred Halde, CMW, East Region, 2019-1

BETH-EL FARMWORKER MINISTRY, INC.

Nancy Bertram, EFW, East Region, 2020-1

**Report of the Coordinating Team
To the Presbytery of Tampa Bay
August 23, 2018 Stated Meeting**

Motions for Presbytery

1. That the Presbytery set its Stated Meetings for 2019 as follows:
 Thursday February 21st, 2019 at First Presbyterian Church of St. Petersburg
 Saturday May 4th, 2019 at Northwood Presbyterian Church of Clearwater
 Thursday August 29th, 2019 at St. Andrew's Presbyterian Church of Sun City Center
 Thursday November 9th, 2019 at First Presbyterian Church of Winter Haven
 (consent)
2. That the Presbytery approve an Administrative Commission (appointed by the Moderator) to come alongside Northwest Presbyterian Church at their request to help them resolve some financial concerns.
3. That the Presbytery approve the revised Bylaws.
4. That the Presbytery approve the revised Presbytery Manual of Administrative Operations.
5. That Presbytery Per Capita remain unchanged at \$21.75 for 2019. Given increases to General Assembly Per Capita, with Synod Per Capita likely to stay the same, the figure churches should use in their planning for next year's total Per Capita would be \$32.20. Please note that this figure is dependent on Synod Per Capita remaining unchanged.

Actions Taken by the Committee

1. Approved minutes for the May 5th, 2018 Stated Meeting of Presbytery.
2. Approved the offering of the August 23rd Presbytery meeting to go to the Judeo Christian Health Clinic.
3. Approved the docket for the August 23rd Stated Presbytery meeting.

Items for Information

1. There are several potential church mergers which may come before future Presbytery meetings.
2. Vice Moderator Loli Ros Reiter is compiling a list of Spiritual Directors.
3. The theme of the November 8th, 2018 Presbytery meeting will be self-care.

June 11, 2018

Dear Friends of Tampa Bay Presbytery,
✓Patrice Hatley, Presbytery Coach
Clem Street, Contact Person to N.W. Presbyterian
Michael D. Clark, West Region Chair
Dave Baker, Stated Clerk

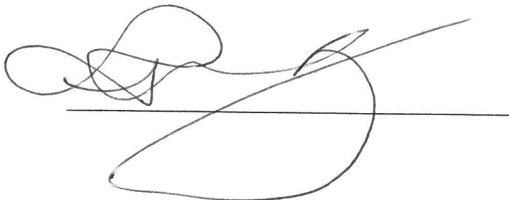
We, the Session of NorthWest Presbyterian Church, have been committed to serving our congregation and community to the best of our ability. We have many assistance programs actively helping many homeless and hungry people through our Food Bank, Clothing and Health aids, Showers and the several AA meetings each week held in our church to meet the needs of Drug and Alcohol Addiction.

However there are needs that we are facing that we are not able to adequately meet which include some major financial obligations, the ability to have a full time minister (or even a part-time minister) and other building repairs that are needed. It would be helpful to have the assistance of Presbytery to aid us in drawing up a new Mission Plan that will take us into the future as a secure, confident mission-minded congregation serving the community around us as well as aids to special needs people facing homelessness, addictions, and family/personal counseling. In order to be a viable ministry we need the help of caring and knowledgeable people. We want a trust relationship with Presbytery knowing that there are caring and capable people in Presbytery that can help us achieve a working plan for the future.

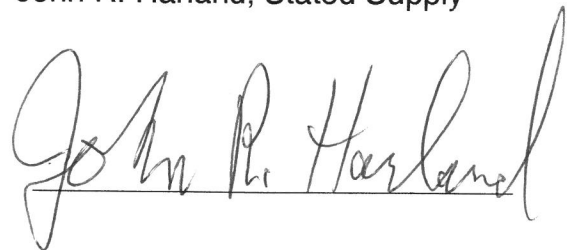
We hope you might give consideration to helping us in this endeavor. We are committed to helping others, and though our numbers are small our faith is large. Thank you for considering our requests.

Sincerely,

Paulette Leiby, Clerk of Session

A handwritten signature in black ink, appearing to be 'Paulette Leiby', written over a horizontal line.

John R. Harland, Stated Supply

A handwritten signature in black ink, appearing to be 'John R. Harland', written over a horizontal line.

Summary of Changes to Bylaws and Manual

At the May 5th, 2018 Stated Meeting of the Presbytery of Tampa Bay, the Presbytery voted to adopt a motion from the Coordinating Team which would eliminate Regional Commissions in favor of more frequent Presbytery meetings and networking groups. In response to that motion, the foundational documents of our Presbytery, the Bylaws and Manual of Operations, have been extensively updated.

Most of the changes relate to removing Regional Commissions, but there are also a few other additions which have been rolled into the changes, such as a new policy on email voting. Read about the changes below, and download the full changes at: presbyteryoftampabay.com/Packet-Appendix-08-23-18.pdf

Summary of Changes to Bylaws:

The COM's powers required further updating in response to how they were living into the new structure, there needed to be a section describing the Committee on Bills and Overtures somewhere, and there were some new looser rules available for email voting. Otherwise, the changes to the Bylaws were related to removing the Regional Commissions.

- Removed all references to Regional Commissions
- Commissioned Ruling Elders are now Commissioned Pastors and that language has been updated throughout
- Added section 1.4.m, allowing Presbytery boards to take actions between meetings via email with unanimous affirmative consent (no response does not indicate consent). Actions are then ratified at the next meeting.
- Removed section 2.7.e as it is redundant with 2.7.c
- Updated powers of the Commission on Ministry
 - Clarified who elects Regional Chairs (the COM as a whole)
 - Added power to set minimum terms of call for Commissioned Pastors alongside Pastors and Certified Christian Educators
 - Added power to approve requests from congregations to create or abolish pastoral positions.
- Added section 4.2 on the Committee on Bills and Overtures. This committee was formerly part of the standing rules, but didn't make it into the previous versions of the Bylaws.

Summary of Changes to Manual of Operations:

Changes to the Manual were relatively straightforward:

- Removed all references to Regional Commissions
- Updated Redress to reflect lack of Regional Commission Leadership teams (this only affects the Nov. 8th, 2018 Stated Meeting, as the new Redress will be approved then)
- Removed regional balancing requirements from committee and commission membership rules
- Updated the links to the COM Manual and the new Bylaws (assuming they are approved)

Vice-Moderator's Report**We have 2 ways to access our mental health benefits:**

1) Cigna Behavioral Health provides 6 free initial sessions with a therapist within their network. To find a therapist:

go to www.cignabehavioral.com

-click on "provider Directory"

-then go to the bottom of the page where you will fill out information to help find the best fit for your needs.

-finally click on "search"

2) Also, Highmark Blue Cross Blue Shield provides a directory of a variety of health care providers. To find a therapist:

go to www.highmarkbcbs.com

-click on "find a doctor or RX"

-click on "find a Doctor, Hospital, or other Medical Provider"

-in the box labeled "Plan name", type:

BCBSPPO

-there is a box on that same page where you can type in your town and zip code

-in the box labeled "Type name, hospital, clinic, specialty or condition", type one of the following:

THERAPIST or COUNSELOR or PSYCHOLOGIST

It should pop up a list of therapist in your area.

SPIRITUAL DIRECTORS SERVING IN OUR AREA

Lou Arnold
Tarpon Springs, FL
H: 727-942-7904
C: 321-246-3104

Lew-is-darn-old@tampabay.rr.com

Rev. Deb Belusa (starting 1/2019)

Tampa
H: 813-632-2701
C: 973-476-7393

deb.belusa@gmail.com

Tim Arsenault
Clearwater
H: 757-581-9124
C: 727-222-9056

tarsen0885@aol.com

Hank Belusa (starting 1/2019)

Tampa
H: 813-632-2701
C: 973-462-8623

12ballou@gmail.com

Vice-Moderator's Report (con't)

Yvette Lovell-Biggs
Lakeland
H: 863-858-7697
ymtlb@yahoo.com

Sandra Chmielewski
Tampa
C: 952-412-4985
sandrachmielewski@gmail.com

Rev. Bill Cooley
St. Petersburg
C: 863-944-0742
pastorbillhome@gmail.com

Donna Daniels, SND
Safety Harbor
C: 727-212-5565
Ddaniels@ndec.org

Kathy Filippelli
St. Petersburg
H: 727-345-5989
C: 727-515-3337
W: 727-344-1611 X 367
KMF@dosp.org

Rosemarie Folk
Clermont
C: 978-430-0343
dfolk83120@aol.com

Judy Kahler
Lakeland
H: 863-221-8556
Judykahler@gmail.com

Sarah Madsen
Brooksville
H: 352-796-0868
C: 352-340-6177
smadsen62@tampabay.rr.com

Rev. Carol Solovitz
Lakeland
C: 863-944-4778
csolovitz@gmail.com

Ann Boland Studly
St. Cloud
H: 407-891-6317
C: 407-319-0650
abolandstudly@yahoo.com

Marilyn Swanson
Temple Terrace
813-833-3558
mandeswanson@gmail.com

David Thoresen
Lake Wales
H: 863-589-5335
C: 863-240-0202
W: 863-385-0797
thoresendavid75@gmail.com

Sister Jeanne Williams
Tampa
C: 609-682-2866
jeanneosf@aol.com

Paul Reiter
Sarasota
C: (314)795-2547
Preiter47@me.com

Presbytery of Tampa Bay							
Analysis of Revenues & Expenses - Detail							
January to July 2018							
Accounts	Total Actual (Last Year)	YTD Actual (Last Year)	% YTD Actual (Last Year)	Annual Budget (This Year)	YTD Actual (This Year)	% YTD Actual (This Year)	
MISSION INCOME							
Shared Mission							
7000 - Basic Shared Mission- PTB	\$121,140.53	\$59,641.68	49%	\$145,000.00	\$57,792.23	40%	
7005 - Basic Shared Mission-GA	\$20,145.66	\$145.66	1%	\$250.00	\$0.00	0%	
7010 - Basic Shared Mission-Synod	\$2,290.00	\$0.00	0%	\$4,000.00	\$0.00	0%	
Total Shared Mission	\$143,576.19	\$59,787.34	42%	\$149,250.00	\$57,792.23	39%	
Designated Mission							
7105 - Designated Mission-GA	\$19,797.39	\$8,728.95	44%	\$20,000.00	\$9,766.46	49%	
7110 - Designated Mission Giving-SSA	\$5,367.82	\$297.26	6%	\$1,000.00	\$88.10	9%	
7120 - Beth-El Farmworker-3 Cents	\$11,504.86	\$6,748.71	59%	\$13,000.00	\$4,856.88	37%	
7121 - Beth-El Designated Giving	\$16,202.27	\$4,699.04	29%	\$15,000.00	\$7,984.73	53%	
7125 - CedarKirk-Designated Giving	\$19,106.10	\$3,225.36	17%	\$12,500.00	\$7,026.04	56%	
7135 - Disaster Assist to GA	\$32,677.27	\$0.00	0%	\$7,000.00	\$4,735.00	68%	
7140 - Thornewell-Designated Giving	\$2,458.60	\$0.00	0%	\$500.00	\$348.00	70%	
Total Designated Mission	\$107,114.31	\$23,699.32	22%	\$69,000.00	\$34,805.21	50%	
Investment Income							
7300 - Interest on Investments 1/2	\$4,476.92	\$2,331.72	52%	\$0.00	\$0.00		
7310 - Earnings on Endowments 1/2	\$9,075.50	\$641.65	7%	\$0.00	\$0.00		
Total Investment Income	\$13,552.42	\$2,973.37	22%	\$0.00	\$0.00		
Special Offering Income PCUSA							
7350 - Christmas Joy, GA	\$17,633.33	\$9,855.83	56%	\$25,000.00	\$18,444.72	74%	
7360 - OGHs, GA	\$33,853.52	\$25,631.14	76%	\$30,000.00	\$36,434.83	121%	
7365 - Peacemaking, GA	\$5,309.67	\$1,188.68	22%	\$4,000.00	\$352.30	9%	
7370 - Pentecost, GA	\$9,219.82	\$7,158.32	78%	\$8,000.00	\$5,132.30	64%	
Total Special Offering Income PCUSA	\$66,016.34	\$43,833.97	66%	\$67,000.00	\$60,364.15	90%	
Miscellaneous Income							
7461 - Prior Year Surplus	\$0.00	\$0.00		\$3,000.00	\$0.00	0%	
Total Miscellaneous Income	\$0.00	\$0.00		\$3,000.00	\$0.00	0%	
Total MISSION INCOME	\$330,259.26	\$130,294.00	39%	\$288,250.00	\$152,961.59	53%	

Presbytery of Tampa Bay						
Analysis of Revenues & Expenses - Detail						
January to July 2018						
Accounts	Total Actual (Last Year)	YTD Actual (Last Year)	% YTD Actual (Last Year)	Annual Budget (This Year)	YTD Actual (This Year)	% YTD Actual (This Year)
MISSION EXPENSE						
CCV-Comm Church Vitality & Reg						
8000 - ECDC/CCV Administrative Exp	\$0.00	\$0.00		\$200.00	\$123.50	62%
8001 - Regional COM East	\$3,100.00	\$5,000.00	161%	\$10,000.00	\$2,800.00	28%
8002 - Regional COM Central	\$3,360.16	\$3,000.00	89%	\$10,000.00	\$0.00	0%
8003 - Regional COM West	\$11,000.00	\$11,000.00	100%	\$10,000.00	\$10,000.00	100%
8005 - Redevelopment Projects	\$0.00	\$0.00		\$10,000.00	\$69.90	1%
8006 - Conferences	\$847.14	\$847.14	100%	\$800.00	\$0.00	0%
8041 - FLPDAN	\$10,000.00	\$5,000.00	50%	\$10,000.00	\$5,000.00	50%
Total CCV-Comm Church Vitality & Reg	\$28,307.30	\$24,847.14	88%	\$51,000.00	\$17,993.40	35%
Beth EI Farmworkers Ministry						
8200 - Beth EI - PTB Shared Mission	\$47,000.00	\$35,250.00	75%	\$47,000.00	\$23,500.00	50%
8205 - Beth EI 3 Cents Allocation	\$11,504.86	\$6,748.71	59%	\$13,000.00	\$4,568.88	35%
8210 - Beth EI Designated Giving	\$16,202.27	\$4,699.04	29%	\$15,000.00	\$7,984.72	53%
Total Beth EI Farmworkers Ministry	\$74,707.13	\$46,697.75	63%	\$75,000.00	\$36,053.60	48%
Cedar Kirk Camp						
8250 - Cedar Kirk - PTB Shared Mission	\$47,000.00	\$23,500.00	50%	\$47,000.00	\$23,500.00	50%
8255 - Cedar Kirk Designated Giving	\$19,106.10	\$3,225.36	17%	\$12,500.00	\$7,314.04	59%
Total Cedar Kirk Camp	\$66,106.10	\$26,725.36	40%	\$59,500.00	\$30,814.04	52%
Transitional Mission Programs						
8300 - Transitional Administration	\$0.00	\$22.47		\$0.00	\$0.00	
Total Transitional Mission Programs	\$0.00	\$22.47		\$0.00	\$0.00	
Synod of South Atlantic						
8500 - Synod Basic Shared Mission	\$3,290.00	\$0.00	0%	\$4,000.00	\$0.00	0%
8505 - Synod / Mission/Instite	\$2,982.00	\$2,982.00	100%	\$3,000.00	\$2,982.00	99%
8510 - Designated Mission	\$5,367.83	\$297.26	6%	\$1,000.00	\$88.10	9%
8515 - Thornwell Home	\$2,458.60	\$0.00	0%	\$500.00	\$348.00	70%
Total Synod of South Atlantic	\$14,098.43	\$3,279.26	23%	\$8,500.00	\$3,418.10	40%
General Assembly PCUSA						
8555 - Basic Shard Mission	\$20,145.66	\$145.66	1%	\$250.00	\$0.00	0%
8560 - Designated Mission	\$118,491.06	\$52,562.92	44%	\$94,000.00	\$74,865.61	80%
Total General Assembly PCUSA	\$138,636.72	\$52,708.58	38%	\$94,250.00	\$74,865.61	79%
Presbytery of Tampa Bay						
8570 - Mission Surplus to Restricted	\$2,007.38	\$0.00	0%	\$0.00	\$0.00	
Total Presbytery of Tampa Bay	\$2,007.38	\$0.00	0%	\$0.00	\$0.00	
Total MISSION EXPENSE	\$323,863.06	\$154,280.56	48%	\$288,250.00	\$163,144.75	57%
Net Total	\$6,396.20	(\$23,986.56)		\$0.00	(\$10,183.16)	

Presbytery of Tampa Bay							
Analysis of Revenues & Expenses - Detail							
January to July 2018							
Accounts	Total Actual (Last Year)	YTD Actual (Last Year)	% YTD Actual (Last Year)	Annual Budget (This Year)	YTD Actual (This Year)	% YTD Actual (This Year)	
PER CAPITA INCOME							
7500 - Per Capita - Presbytery	\$336,635.44	\$223,144.94	66%	\$274,456.00	\$179,461.02	65%	
7505 - Per Capita - General Assembly	\$64,306.66	\$36,783.61	57%	\$75,000.00	\$38,224.27	51%	
7510 - Per Capita -Synod of SA	\$16,303.20	\$9,469.72	58%	\$24,232.00	\$9,659.43	40%	
7520 - Interest on Investments 1/2	\$4,476.94	\$2,331.72	52%	\$0.00	\$0.00		
7525 - Investment Spending Policy	\$9,075.47	\$641.63	7%	\$35,539.00	\$26,595.89	75%	
Total PER CAPITA INCOME	\$430,797.71	\$272,371.62	63%	\$409,227.00	\$253,940.61	62%	
PER CAPITA EXPENSE							
Presbytery Meetings							
9005 - Presbytery Meetings	\$3,410.38	\$2,437.07	71%	\$5,000.00	\$754.72	15%	
Total Presbytery Meetings	\$3,410.38	\$2,437.07	71%	\$5,000.00	\$754.72	15%	
Administration and Office Exp							
9100 - Legal Counsel	\$0.00	\$0.00		\$3,000.00	\$0.00	0%	
9105 - Audit Fees	\$11,700.00	\$11,700.00	100%	\$12,000.00	\$11,995.00	100%	
9108 - Insurance	(\$15,519.92)	(\$17,306.63)	112%	\$5,000.00	\$1,853.70	37%	
9120 - IT Contracts & Costs	\$7,088.93	\$5,057.90	71%	\$5,000.00	\$6,906.70	138%	
9125 - Equipment Repair & Maintenance	\$5,463.60	\$3,027.90	55%	\$3,700.00	\$2,274.30	61%	
9133 - Operating Expenses	\$705.91	\$705.91	100%	\$2,000.00	\$1,303.08	65%	
9135 - Stationary & Supplies	\$3,584.54	\$2,298.69	64%	\$3,500.00	\$3,578.73	102%	
9150 - Phone/Internet	\$1,581.55	\$42.53	3%	\$2,000.00	\$66.60	3%	
9155 - Utilities	\$215.38	\$140.63	65%	\$500.00	\$174.45	35%	
9170 - Bookkeeper Contract	\$11,623.25	\$7,175.27	62%	\$13,390.00	\$8,848.47	66%	
9180 - Rent	\$9,000.00	\$5,250.00	58%	\$9,000.00	\$5,250.00	58%	
Total Administration and Office Exp	\$35,443.24	\$18,092.20	51%	\$59,090.00	\$42,251.03	72%	
Committee on Ministry							
9200 - COM Administration Expense	\$2,936.18	\$1,320.08	45%	\$5,000.00	\$1,151.23	23%	
Total Committee on Ministry	\$2,936.18	\$1,320.08	45%	\$5,000.00	\$1,151.23	23%	
Presbytery Council							
9220 - Council / Team Administration	\$752.96	\$0.00	0%	\$3,850.00	\$987.44	26%	
9225 - Permanent Judicial Commission	\$0.00	\$0.00		\$500.00	\$0.00	0%	
9245 - Sexual Misconduct Response	\$0.00	\$0.00		\$500.00	\$0.00	0%	
Total Presbytery Council	\$752.96	\$0.00	0%	\$4,850.00	\$987.44	20%	
Preparation for Ministry Comm.							
9275 - CPM Administration	\$1,769.17	\$100.00	6%	\$2,337.00	\$434.68	19%	
Total Preparation for Ministry Comm.	\$1,769.17	\$100.00	6%	\$2,337.00	\$434.68	19%	

Presbytery of Tampa Bay						
Analysis of Revenues & Expenses - Detail						
January to July 2018						
Accounts	Total Actual (Last Year)	YTD Actual (Last Year)	% YTD Actual (Last Year)	Annual Budget (This Year)	YTD Actual (This Year)	% YTD Actual (This Year)
Coordinator-Coach						
9901 - Coach/Coord Salary	\$90,180.00	\$52,605.00	58%	\$92,885.00	\$54,182.94	58%
9902 - Coach/Coord FICA	\$6,898.80	\$4,024.30	58%	\$7,106.00	\$4,144.98	58%
9904 - Coach/Coord Auto & Prof	\$6,657.89	\$2,410.77	36%	\$12,000.00	\$6,764.09	56%
9906 - Coach/Coord Cont Ed	\$1,720.32	\$1,720.32	100%	\$2,000.00	\$2,043.70	102%
Total Coordinator-Coach	\$105,457.01	\$60,760.39	58%	\$113,991.00	\$67,135.71	59%
Stated Clerk						
9925 - Stated Clerk Salary	\$40,000.08	\$23,333.38	58%	\$41,200.00	\$24,033.38	58%
9926 - Stated Clerk SECA	\$4,657.68	\$2,716.98	58%	\$4,760.00	\$2,865.38	60%
9927 - Stated Clerk Auto	\$3,100.08	\$1,808.38	58%	\$2,000.00	\$1,166.62	58%
9930 - Stated Clerk, Clergy Housing	\$20,884.32	\$12,182.52	58%	\$21,012.00	\$12,257.00	58%
9935 - Stated Clerk Pension & Med	\$21,952.60	\$12,959.10	59%	\$23,018.00	\$13,858.88	60%
9940 - Stated Clerk-Continuing Education	\$0.00	\$0.00		\$2,200.00	\$143.57	7%
9945 - Stated Clerk Professional Expenses	\$2,606.70	\$736.31	28%	\$1,100.00	\$0.00	0%
Total Stated Clerk	\$93,201.46	\$53,736.67	58%	\$95,290.00	\$54,324.83	57%
Support Staff						
9950 - Support Staff, Salaries	\$21,489.10	\$12,447.09	58%	\$22,700.00	\$13,699.70	60%
9960 - Support Staff, FICA/Medicare	\$1,643.83	\$952.14	58%	\$1,737.00	\$1,048.02	60%
Total Support Staff	\$23,132.93	\$13,399.23	58%	\$24,437.00	\$14,747.72	60%
Total Personnel Budget	\$221,791.40	\$127,896.29	58%	\$233,718.00	\$136,208.26	58%
Per Capita Forwarded						
9975 - Per Capita, G A	\$64,306.66	\$36,783.61	57%	\$75,000.00	\$38,224.27	51%
9980 - Per Capita, Synod	\$26,303.25	\$9,469.72	36%	\$24,232.00	\$9,659.43	40%
9985 - Presbytery Surplus to Restricted	\$67,688.28	\$0.00	0%	\$0.00	\$0.00	
Total Per Capita Forwarded	\$158,298.19	\$46,253.33	29%	\$99,232.00	\$47,883.70	48%
Total PER CAPITA EXPENSE	\$424,401.52	\$196,098.97	46%	\$409,227.00	\$229,671.06	56%
Net Total	\$6,396.19	\$76,272.65		\$0.00	\$24,269.55	

Beth-El

Farmworker Ministry, Inc.



There is plenty to smile about at Beth-El!

The dental clinic will be opening in September and negotiations have begun with Catholic Charities to bring a medical clinic to Beth-El. When complete, the Health & Wellness Campus will have onsite legal, medical, dental and other services that enhance the lives of those living in poverty.

Most of the farms in our area are idle this time of year. Those who earn their living in the fields and remain in Wimauma will likely be unemployed until Fall, which makes the services provided by Beth-El so important.

Recipient's of the mission's weekly food distribution have doubled in the last three years. On a recent Tuesday, over 720 families passed through our hallways, receiving dry goods, fruits, vegetables, paper products and other needed resources. We believe this increase in attendance is due partly to the healthy items the mission can offer, but may also be part of a growing trend as more farmworkers have difficulty securing stable housing and employment.

Long term, education is the key to sustainable transformation. This year the mission has approved scholarships for nine students from our community. Their interests range from pursuing a nursing degree to working at NASA!



Pastor Tamara and the congregation of Nuevo Camino at Beth-El, continue to strive to live as Christ's faithful disciples through life's ups and downs. Recently the congregation embarked on an in depth study of Mark 4:35-41 discerning God's presence in their lives through all times.

Over 70 children and youth participated in the mission's summer activities. 32 kids received scholarships to attend Cedarkirk, with over 75 enrolled in Vacation Bible School. For the fourth year, Trinity Presbyterian of New Port Richey led the first week of VBS, followed by Fernadina Beach in week 2. The third week of summer activities included each child picking out a pair of new shoes at Walmart

followed by another fun "pool day" at Cedarkirk. All ready plans are in the works for next year's VBS. The summer activities concluded with the Blessing of the Backpacks on August 5th. This year we anticipate distributing over 500 backpacks to students in our community.



Beth-El

Farmworker Ministry, Inc.



Volunteer Opportunities

- Food Distribution - Tuesday 8:45am to 2pm
- Outreach to Farms – Wed/Thur 11am to 2pm*
- Prepackaging Deliveries - M/W/TH/F 9am to Noon
- Dental Clinic – Monthly M/Sa 7:30a to 2pm
- Step Up for Success Mentors – Tuesday 9am to 2pm
- Summer Youth Programs – Various times

Volunteers packaging or working in the mission’s food distribution may need to stand for long periods of time. Some light and heavy lifting may be required. Some knowledge of Spanish is helpful, but not required. Volunteers interested in becoming a mentor in the Step Up for Success program or Dental Clinic must be bi-lingual. Additional Training may also be required.

*The outreach to farmworkers in the fields is seasonal (September through April).

I would like to become more involved at Beth-El Mission as a Volunteer:

- Summer Camp Scholarships
- Food Pantry
- Lead VBS
- Organize a Workgroup
- Organize a Food Drive
- Organize a Clothing Drive
- Back to School Program
- VBS Supplies
- College Scholarships
- Dental Clinic
- Food Pantry
- Mission’s Greatest Need

I would like to donate \$ _____

Name: _____

Address: _____

City/State/Zip _____

Phone: _____ Email: _____

Beth-El Farmworker Ministry, Inc.

A Covenant Partner of Peace River Presbytery, The Presbytery of Tampa Bay and the Board of Missions of the Cumberland Presbyterian Church



Cedarkirk

*A place apart to build up
the body of Christ in love.*

CAMP & CONFERENCE CENTER

Cedarkirk Capital Campaign Update

Stated Meeting - August 2018

Cedarkirk is in the midst of a \$4 million capital campaign that focuses on improving the accessibility of our buildings and expanding our facilities so that we may better minister to those we serve. We are delighted to report that we have raised over 1.3 million dollars! Our goal is to reach 2.5 million enabling Cedarkirk to break ground on the new dining hall portion of this effort. This ministry has been a blessing in the lives of so many children, youth, and adults for the past 47 years and we are grateful for your history of support and partnership in sharing God's love. For information, please contact John Reiter at john@cedarkirk.org or Julie Poulin at campaign@cedarkirk.org.

Sensational Summer Camp Season

We have been blessed with another great summer full of fun and faith. This year, nearly 1,400 children and youth have been a part of our summer programs. Through our traditional summer camp, the Challenge to Change programs, and Traveling Day Camp, it has been a summer filled with stories of transformation and growth. We have also been blessed with an incredible summer staff, dedicated volunteers, and wonderful worship leaders. Thank you for all that you did to pray for and support the summer ministry of your camp and conference center.

Have You Heard about Cedarkirk Traveling Day Camp?

This summer, Cedarkirk was thrilled to partner with the following congregations to serve over 500 campers by bringing a week of day camp to their church: Forest Hills PC in Tampa, First PC in Brandon, Kirkwood PC in Bradenton, Venice PC in Venice, Peace PC in Lakewood Ranch, Palma Ceia PC in Tampa, Hope PC in Winter Haven, Trinity PC in New Port Richey, McCleod Memorial PC in Bartow, Vanderbilt PC in Naples, Christ PC in Largo, Hyde Park PC in Tampa, Faith PC in Cape Coral, and First PC in Sarasota. In each setting, we arrived with a van load of staff, supplies, games, and more...all the things needed to provide an exciting and transforming week of growth and spiritual development. The response to this program has been tremendous and we are grateful for these incredible partners. If you are interested in partnering with us to host a traveling day camp in 2019, please visit www.cedarkirk.org/tdc to learn more.

Fall Events for All Ages! - Camp Isn't Just for Kids!

As we look ahead to the fall, we are delighted to be offering programs designed for God's children of all ages. On Labor Day weekend, we will host our annual Family Retreat, which is a great opportunity to enjoy all that camp has to offer as a family. In late September, we welcome elementary age groups to our Falltastic retreat for 24 hours of fun and faith. We all know how hard it is to hear God in the midst of our busyness, surrounded by all the noise that is in our lives. We hope you can take a moment in October to join us for our Silent Retreat and be open to listening for God's voice in your life. On October 30th, we will host our annual Older Adult Retreat complete with a dynamic speaker (Rev. Dr. Ken Shick), engaging program, and tasty lunch. Finally, we will be offering two Fusion youth retreats for both middle and high school groups in November. Please visit www.cedarkirk.org for more info.

UPCOMING EVENTS

Family Retreat - <i>Come and enjoy a family retreat experience like no other!</i>	Aug. 31 - Sept. 2
Falltastic - <i>24 hours of camp fun for your Sunday School class!</i>	Sept. 21 - 22
Silent Retreat - <i>A guided retreat designed for people seeking space to listen to God.</i>	Oct. 14-16
Senior Adult Retreat - <i>A special day event complete with dynamic speaker & tasty lunch!</i>	Oct. 30
Fusion Youth Retreat - <i>A Cedarkirk event for middle and high school youth!</i>	Nov. 9-11 & Nov. 30-Dec. 2
Christmas Retreat - <i>A little bit of summer camp at Christmas time!</i>	Dec. 21st - 23rd
Open House - <i>Come and check out Cedarkirk! A free afternoon of fun and relaxation.</i>	Feb. 2 & May 11
Confirmation Retreat - <i>A comprehensive and engaging weekend for confirmation classes.</i>	March 8-10
The Shepherds' Sabbath - <i>A free retreat of respite and renewal for church professionals.</i>	April 22-24



FLORIDA PRESBYTERIAN DISASTER ASSISTANCE NETWORK

In Partnership with Presbyterian Disaster Assistance (PCUSA)



August 2018

FLAPDAN and Hurricane Irma – By the Numbers

11 Months since Hurricane Irma – What Has Happened?

In September 2017, Hurricane Irma devastated multiple communities within Florida.



49 Counties received a Federal Disaster Declaration

5 Presbyteries were affected

28 PCUSA churches were damaged



2,641,756 Families registered for FEMA assistance



More than **150** partner organizations are participating in Irma response and recovery



Over **30** Long Term Recovery Groups were formed to assist families who are unable to recover without further assistance



Presbyterians are locally active in **15** Long Term Recovery Groups

FLAPDAN received a **\$100,000** grant from **Volunteer Florida** for Irma response which helped to support Irma related work and travel. Because of this grant, FLAPDAN was able to hire Barbara Hassall, one of FLAPDAN's board members from Tropical Florida Presbytery, as a part-time Liaison for Irma Recovery. Barbara assists Kathy Broyard with long term recovery coordination in Tropical Florida and Peace River Presbyteries. This grant is also assisting with volunteer hosting costs for work teams. Thank you, Volunteer Florida!

2 PDA sponsored Volunteer Host Sites are receiving work teams



Known Voluntary Agency Hours			
as of March 18, 2018			
Number of Agencies Reporting	Number of Volunteers	Total Volunteer Hours	Total Value of Volunteer Hours*
143	45,777	1,519,679	\$34,496,703

Volunteer hours rate of \$22.70 is based on the Independent Sector Value of Time resource: <https://www.independentsector.org/resource/the-value-of-volunteer-time/>

Information regarding equipment hours and donated goods have not been received at this time.

6 additional Presbyterian churches and ministries are hosting volunteer teams in Florida

We are so grateful to **Presbyterian Disaster Assistance** for their support in Hurricane Irma response and recovery through the deployment of multiple National Response Teams for Ministry of Presence, Emotional/Spiritual Care and Resilience Training, Hosting Sites, and staff support to FLAPDAN and FEMA. PDA’s generous financial assistance has provided presbytery grants, church damage grants, long term recovery support and so much more!
#BigLoveForPDA



How You Can Help!



Work Teams are needed in several areas across Florida. Please consider forming a mission team to help a family repair their home. Many families are still living under blue tarps and in moldy structures and can only recover through the coordination of volunteers and donated resources. FLAPDAN has partnered with these amazing organizations through local Long Term Recovery Groups and helps to coordinate volunteer teams to serve these communities. Check out some of the opportunities at <http://pda.pcusa.org/page/work-teams-locations/#fl> or contact Kathy Broyard, FLAPDAN Executive Director, at fla.pdan@pcusa.org or 941-483-0675. Thank you!

Florida Presbyterian Disaster Assistance Network, Inc.
 Phone: 941-483-0675 Email: fla.pdan@pcusa.org
 Mailing Address: P.O. Box 491279, Leesburg, FL 34749-1279
www.flapdan.org

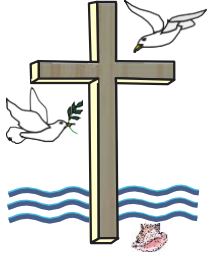
**Stated Clerk and Director of Communications
Report to Presbytery for
August 23rd, 2018 Stated Meeting**

Motions:

1. That all requests for excused absences be granted for today's meeting. (consent)

Items for Information:

1. Many thanks to Rev. Robert Shaw who took over as the Temporary Stated Clerk during the Stated Clerk's Paternity leave from June 13th to July 11th!



Presbyterian Women in the Presbytery of Tampa Bay



MODERATOR'S REPORT
ELLEN STOUP
PRESBYRY MEETING – FIRST - BRANDON
AUGUST 23. 2018

Recent events:

On August 2-5, 2018, we had ten of our Presbyterian Women attend the Churchwide Gathering for Presbyterian Women in Louisville, Kentucky. The theme this year was "Arise, Shine, Your Light has Come" based on Isaiah 60:1. They attended workshops and were able to network with other women of the Tampa Bay Presbytery as well as women from around the country! God is so good!

